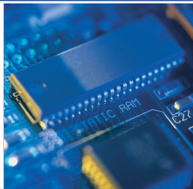
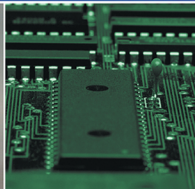


# GENERAL CATALOG



# Information

**PowerPlus:** We have a simple goal: to offer our customers in the carpet, upholstery, hard floor and restoration cleaning industries a wide variety of chemicals and accessories at affordable prices. Let PowerPlus be your one-stop accessory supplier and watch your company improve inventory control, customer response time and overall costs.

**ORDERING:** Orders are accepted 24 hours a day by fax, phone or internet. A service representative is available from 8:00 am to 5:00 pm (PST), Monday through Friday. Fax and Internet orders are strongly suggested.

PHONE: (714) 635-9264  
FAX: (714) 635-9442  
INTERNET: [www.PowerPlusonline.com](http://www.PowerPlusonline.com)  
MINIMUM ORDER: No minimum order

**SHIPPING:** Most orders will be processed and shipped within 24 hours. If you are ordering for export or items that need custom assembly or hazardous materials, please allow an extra day. While we strive to keep backorders to a minimum, unless instructed otherwise, we will ship all available items and hold backordered items for shipment with your next order. Shipments will be sent UPS ground unless another carrier is specified or the order qualifies for UPS hundred weight or common carrier (truck). Express shipments will be accepted and sent as the customer specifies.

**FREEZE/THAW INSTABILITY:** The following chemicals are NOT freeze/thaw stable: Teflon Advanced for Wool and Clear Grout Sealer and its color additives. Since PowerPlus has no control of how each carrier cares for its freight, we will not be responsible for chemicals that are frozen during shipment. Between the months of October and March, order the chemicals listed above at your own risk. All other chemicals are freeze/thaw stable.

**WARRANTIES AND RETURNS:** No returns will be accepted without prior authorization.

Please call a Customer Service Representative for instructions (714) 635-9264. All items returned for restocking will be subject to a 20% restocking fee.

**DAMAGE IN SHIPMENT:** All claims for material damaged in shipment must be reported to the delivering carrier: UPS or FedEx driver, truck driver, etc. Please keep the original carton as this is often necessary in order to settle claims.

**PRODUCTS AND PRICING:** There are many accessories and parts we sell which are not included in this catalog. Should you need an item or part not included in this catalog, give us a call. Chances are we will have it in stock or can special order it for you. Prices listed in the catalog are subject to change without notice.

**NON-STOCK ITEMS:** We occasionally receive orders for non-stock items. We are more than happy to source out these items and order them. However, please note when ordering these items we are not able to issue return authorization numbers for them. Once these items have shipped from the manufacturer, the order cannot be cancelled nor the items returned.

**CREDIT:** We are happy to open a NET 30 account for qualified customers. Fill out a credit application and submit to PowerPlus. Please allow two to four weeks for processing. We also accept payment by credit card at the time of order. In order to maintain your credit status, accounts must be paid within terms. No orders will be shipped on past due accounts until the outstanding balance has been paid. Customers will be subject to pay NSF fees upon all returned/bounced checks.

**DIRECT SHIPMENT** ☺: Items that have a ☺ after the item name (or by the picture) indicate that the item will be shipped directly from the manufacturer. This will be at our discretion. Items will be shipped F.O.B. origination point. Customers will be subject to restocking fee upon all returned shipments unless authorized by PowerPlus Management.

# Table of Contents

See complete index on back inside cover.

<b>SPRAYERS</b> .....	1-4
Revolution Sprayers .....	1
Stainless Pump Sprayers .....	3
<b>PORTABLES</b> .....	5-6
Olympus .....	5
<b>TILE AND GROUT</b> .....	7-13
SX12 Tile and Grout Tool .....	7
Gekko Tools .....	8
Versa Pro .....	13
<b>RESTORATION</b> .....	14-26
Airmovers .....	14
Meters .....	16-17
<b>VAN ACCESSORIES</b> .....	27-37
Hose .....	27-28
Cool Cuffs .....	30-31
Van Holders .....	36
<b>CHEMICALS</b> .....	38-43
Tile and Grout .....	38

<b>CARPET AND UPHOLSTERY TOOLS</b> .....	44-57
Brush Pro .....	44
Wands .....	46
Groom Products .....	51-52
<b>CARPET REPAIR TOOLS</b> .....	57-61
Kool Glide .....	57
UV Flashlights .....	58
Behr Claws .....	59
<b>ACCESSORIES</b> .....	62-66
Quick Connects .....	62
Sticky Tabs .....	64
Super Straps (Hose Straps) .....	65
<b>CUSTOMER CARE ACCESSORIES</b> .....	67-68
Corner Guards .....	67
Duff's Doorstoppers .....	68
<b>COMPLETE INDEX</b> .....	69



## Revolution® High Pressure Adjustable Injection Sprayer

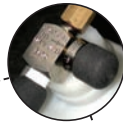
Apply any chemical in your truck with the Revolution. Get ratios of 1:4 up to 1:64 with a simple turn of a knob. When you come to that grimy area in front of the couch, turn the knob for higher concentrations of cleaner, turn it lower for light soils.

Now you, the professional, decide your mix ratio on prespray. Heavy for heavy soil, light for light soil. You won't need constant high concentrations when only a small portion of the job requires it.

Hooks directly to your solution line with portables and truckmounts.



**High Pressure**  
250-1,000 PSI  
AS08R \$257.60



Adjust solution on the fly with the adjustable metering knob!



**Low Pressure**  
50-250 PSI  
AS12R \$217.35

- Stainless steel metering stem.
- Larger knob with bigger numbers.
- Can recalibrate draw ratios in the field.
- More accurate and reliable.



**Premium Ball Shut-Off Valve**



**Econo Ball Shut-Off Valve**



**5-Quart Container**



**Metering Tip Kit**

See page 62.

## Hydro-Force Injection Sprayer

Hydro-Force sprayers connect to your pressure line and automatically draw concentrate from the 5-quart container to achieve the desired dilution ratio. Use for presprays, deodorizers, protectors, dyeing, etc.



**High Pressure**  
250-1,000 PSI  
AS08 \$205.85



**Low Pressure**  
50-250 PSI  
AS12 \$177.10

# TWBS

## The World's Best Sprayers

TWBS Series sprayers are completely rebuildable and are made with heavy-duty parts. Their wide mouths make them easy to fill. Each sprayer is fully viton fitted, includes pressure gauge/relief valve, and is fitted with brass fan pattern jets.



### A. TWBS 3-gallon

(large volume spraying)

- Heavy-duty chemical-resistant hose
- 18" brass extension
- Solid brass trigger assembly
- High volume easy pump
- Tough, long lasting

AS204 \$88.68

### B. TWBS 1-gallon

The TWBS 1-gallon sprayer has a comfortable, durable spray gun, spray tip straining and check valve, and a 10" flexible hose. It is best used for upholstery pre-spray, solvent or water-based protectors, wall washing, or neutralizing-chemicals.

AS18 \$106.89

### C. TWBS 2-gallon

(small to medium jobs)

- Heavy-duty chemical-resistant hose
- 18" brass extension
- Solid brass trigger assembly
- High volume easy pump
- Tough, long lasting

AS202 \$78.95

# OMNI PRO™ Sprayer



AS75 OmniPro \$545.10

## OmniPro™ Battery Sprayer

**Convenient**—The OmniPro™ Battery Sprayer holds a removable 3-gallon bottle, allowing you to easily switch chemicals. The translucent bottle also allows you to easily see when you need a refill. Fifteen feet of coiled hose allows you to move around easily while leaving the sprayer unit in one place.

**Flexible**—Comes with an extra spray jet, so you can quickly and easily switch from doing carpet pre-spray to upholstery pre-spray. Removable jets allow for easy priming and rinsing of lines.

**Retractable Handle**—Allows extra mobility with built-in wheels, or lift & carry with molded-in handle.

**Reliable**—Charge the battery from a wall outlet and top the charge off between jobs with your van's cigarette lighter outlet. Sprays up to 60-gallons on a full charge.

**Durable**—The rotomolded plastic housing unit is proven to last for years, as is the heavy-duty gun and stainless wand assembly. Repairs are easy when necessary. The battery and pump are mounted on an easy-to-access aluminum plate.

### Accessories:

NM4108	110 Volt Wall Charger	\$20.88
NM4101	2.5 gallon bottle and lid	\$6.61
NM4118	Alligator Clips 12v Charger	\$20.57



## 2-GALLON STAINLESS PUMP SPRAYERS



### Standard Sprayer

The perfect size, weight, balance, and price for the professional. One of the best buys for a top-grade stainless sprayer.

- Brass plunger assembly
- Brass fan jet
- Zinc trigger assembly
- 12" brass extension

AS21 Standard Sprayer \$114.94



### Professional Sprayer

Use for any and all of your spraying needs. Built to give the comfort and quality that professionals demand. This sprayer will give years of service with a full selection of replacement parts available.

- Brass plunger assembly
- 18" brass extension
- Viton O-ring and fitting
- 36" indestructible flexible hose
- Comfortable, tough gunjet

AS23 Professional Sprayer \$174.46



### Solvent Sprayer

This top-of-the-line sprayer is used by thousands of professionals for application of solvent-based protectors and other harsh chemicals. It has been proven durable and is nylon/viton-fitted throughout. This sprayer is ideal for use with solvent-based protectors, deodorizers, dry cleaning chemicals, and upholstery presprays. Ideal for drapery cleaning. Also suitable for any water-based chemical.

- High-quality metal gunjet
- 10' indestructible, flexible, pressure hose

AS22A Solvent Sprayer \$206.89



### 2 qt. Pump Sprayer

The AS05 2-quart Pump Sprayer is built for heavy-duty, continuous use. It is fitted with chemical-resistant viton throughout, and will outlast most other sprayers four to one! The wide mouth means easy filling. This durable polyethylene sprayer is rebuildable.

Use for:

- Upholstery/prespray • Spotting
- Wall washing
- Almost any chemical spray job!

AS05 \$28.31

**Proven the most durable hand sprayer built!**

#### Available Options

Foam Nozzle	100007	\$16.00
Fan Pattern Jet	NA1411B	\$6.74



### TCBS 3-gallon

#### *The Country's Best Sprayer*

TCBS will stand up to your most demanding applications. Built with all the features that professionals demand, including heavy-duty brass trigger with viton fittings, an 18" heavy-duty brass extension and a brass fan pattern veejet. TCBS also has 36" heavy-duty chemical/solvent-resistant hose, pressure gauge/ relief valve combination, and a Viton check valve—strong chemicals and technicians are no problem for the TCBS sprayer.

AS16 \$66.83

# 》》》》 Sprayers - Assorted

## A. 48 oz. Hand Sprayer

The AS01 has chemical-resistant nitrile gaskets and an adjustable cone spray pattern. This hand sprayer is ideal for small jobs, wall cleaning and acid sprays.

AS01 48 oz. \$17.58

## B. 3-gal. Commercial Sprayer

The chemical resistant AS14 sprayer has an 18" poly extension, fan pattern spray jet, and a wide funnel top. It's perfect for all medium-duty spray jobs and acidic chemicals.

AS14 3-gallon \$49.23

## C. Pailtop Sprayer

This heavy-duty sprayer can be used on portable pails, or on 55-gallon drums. (extension wand not included)

- Metal gun-jet for exacting control and shutoff.
- 10 feet of indestructible hose for wide area coverage.
- Built to withstand solvents and harsh chemicals.
- Pumps at 45 psi with a 6501 brass teejet.

AS89 Pailtop Sprayer \$332.35



## D. Ergonomic Trigger Sprayer - Best Performer

This sprayer has an anti-back-off locking mechanism when used with special 32 oz. bottle (AS29A). It has high output, even on mist setting. It is also quick priming, and chemical resistant.

AS24 \$1.99 12+ \$1.79

AS24A (head only) \$1.02

AS29A (bottle only) \$1.22

## E. 32 oz. Bottle

Fits the AS50, AS28A, or AS24A sprayer heads. Dilution ratios (up to 1:8) and ounce graduations are printed on the side.

AS29 \$1.83

## F. Trigger Sprayer

- Easy-grip 32 oz. bottle
- Chemical resistant

AS06 \$2.29

AS06A (head only) \$1.24

## G. SprayMaster Sprayer

- 5-year manufacturer's guarantee
- High volume output
- Chemical resistant
- 32 oz. calibrated

AS04 \$9.83

## H. 2-Way Sprayer

This handy sprayer sprays once when you squeeze and once when you relax, saving you both time and energy. Viton fitted for chemical resistance and long life.

AS28 \$9.14

AS28A (head only) \$7.99



# Olympus Portable Extractors

A portable extractor is an essential piece of equipment for every cleaner, even if you have a truckmount. A portable extractor acts as a back-up if your truckmount goes down, and allows you to work in areas you can't reach effectively with your truckmount.

*Not Just Any Portable Extractor*—Whether you're cleaning carpets or tile, there's an Olympus model that fits your needs. Your Olympus distributor can help you choose the right one. All Olympus models are built to be durable and effective.



Large, partially pneumatic stair-climbing wheels



Top-mounted control panel



5-year warranty on rotationally-molded polyethylene body



Large, no-drip motor cavity: easy access, no spills get inside

## FEATURES

- Motor-cavity cooling system (patent pending)
- AW29 stainless 2-jet wand
- 25' solution and vac hoses
- 25' electric cords included
- 12-gallon capacity



Model	psi	Vac motor	Weight	Cords	Heater	Price
M100	100	Dual 2-stage	85 lbs.	1	No	\$1816.72
M100H	100	Dual 2-stage	92 lbs.	2	Yes	\$2236.49
M200	200	Dual 2-stage	90 lbs.	1	No	\$2153.84
M200H	200	Dual 2-stage	98 lbs.	2	Yes	\$2591.99
M3-200	200	Dual 3-stage	93 lbs.	2	No	\$2405.47
M3-200H*	200	Dual 3-stage	101 lbs.	2	Yes	\$3001.19
M3-500	500	Dual 3-stage	105 lbs.	2	No	\$3029.24
M500H	500	Dual 2-stage	117 lbs.	2	Yes	\$3382.64
M1200**	1200	Dual hybrid	141 lbs.	2	No	\$4598.85

\*20 amp circuits required to run all systems (M3-200H)

\*\*Wand not included.



## Additional options for serious Olympus users

Fully installed, ready to run when ordered with a new Olympus\*\*

### Auto Fill & Chemical Metering

Hook to the hot water faucet and have a continuous feed to your machine for non-stop cleaning. Includes a chemical metering system so measuring cups are a thing of the past. Includes: 50' low-pressure water fill hose • Dema chemical metering system • All hardware

M012 \$396.75

### Auto Waste Pump Out

No more bucket brigades with this powerful APO. It's so powerful it even functions for flood restoration. Includes: 20-gallon-per-minute, high-volume pump (10-15 gpm under working load) • 50' of 3/4" waste dump hose • Automatic float valve and all hardware

M016 \$479.35

## Foam Downer

A key problem with portable extractors is that they have small tanks where foam disipates slowly. Foam Downer kills foam as waste water enters the machine. It uses a hook to hang a jug of liquid defoamer on the vac hose. While your wand is on the floor, Foam Downer injects defoamer into the vac hose and when you lift the wand it stops. Your portable suffers no power loss from foam and your motor will last longer.

AH17 \$32.19



\*\*Built to order. Allow additional time for delivery.

## Portables - Olympus, FX-88

### Olympus M1200 — For Tile & Grout

The Olympus 1200 comes with auto fill and auto dump features already added. It also includes 50' fill hose, 50' dump hose, 25' vac & pressure hose and a Hydro-Filter. Designed specifically for tile and grout cleaning, the 1200 provides 1200 psi of water pressure for tackling the worst grout grunge. It has two vac motors— one 2-stage and one 3-stage. Wand not included. Weighs 141 lbs.

- 12 Gallon Capacity
- Top Mounted Control Panel
- Auto Fill and Auto Pump Out
- 2 Vac Motors
- 1 Year Pump and Vacuum Warranty

M1200 \$4598.85



**OLYMPUS**  
BY HYDRO-FORCE

#### Additional features on the Olympus 1200:

**PowerPrime™:** No more priming problems! A lever on the machine utilizes system vacuum to prime the solution pump.

**BreakerBuddy™:** Prevents the hassle of tripped breakers! Built-in separate circuit indicator that lights up when the two plugs are on separate circuits. \$70 value! Also available separately (AX49).

**Foam Downer™:** Helps prevent foam in the waste tank; helps save vacuum motors! Injects a metered amount of Foam-Less (CH47GL) into the vac line (not on the surface being cleaned— economical!). \$28 value! Also available separately (AH17).



### FX-88/FX88-HP

The FX-88 and FX-88HP come with the industry's first 20 gallon per minute, fully automatic high volume pump-out system. Flood work is a snap with either machine. With auto-fill and chemical metering, the proportioning level control allows complete automatic water fill and chemical feed for operating ease and efficiency. Both machines have a 20-gallon solution tank and a 13-gallon waste tank. They also have an innovative handle system designed to allow fast unloading from vans or trucks and large, non-marking wheels for easy stair climbing. Each unit comes with 50 feet each of 1.5" vac hose, high-pressure solution hose, water hook-up hose, and dump hose.

#### FX-88HP — For Tile & Grout

For cleaning hard surfaces such as grout and tile, this machine outperforms many truckmounts. It provides up to 1,200 psi working pressure to run hard-surface tools like the Turbo and Gekko at optimum levels. It comes with two 2-stage vac motors and lets you adjust the spray pressure down to carpet cleaning levels. Does not include tools.

MA12 \$4755.25

#### FX-88 — For Carpet

This incredible machine has a fully adjustable high efficiency pump (1.5 gpm) direct driven by a G.E. hp high efficiency, dual capacitor motor. Easily adjust the pressure from 50 to 450 psi using the pressure regulator on the control panel. Three vac motors produce up to 14 inches of mercury lift so you can use up to 150' of vac hose with excellent recovery. Comes with a stainless steel two-jet high-pressure carpet wand.

MA10 \$4265.35

**Reduce labor costs, back injuries, and worker's comp claims with the EZ-Access™ Ramp**

#### EZ-Access™ Ramp

Our EZ-Access™ ramps are built for heavy-duty, everyday use. Now even the heaviest equipment can easily be wheeled in and out of your van, trailer, or truck. The AR002 measures 28" x 1.5" x 6' and fold for storage taking up only 3" in width. This makes them easy to carry in the van.

AR002 6' ramp—600 lb. load limit \$441.90







# HYDRO-FORCE SX-12 HARD SURFACE TOOL

The SX-12™ blasts soil and dirt from tile, grout, and smooth or rough hard surfaces. The rotary arm spins to create amazing soil blasting power working from 700 to 2,000 psi while the vacuum ports pick up all the waste. The SX-12™ is ready to work with truckmount carpet machines, pressure washers and vac systems, or the Hydro-Force high pressure portable extractors.

- Works with front-to-back and side-to-side motion
- Works on uneven stone or tile surfaces or smooth concrete
- Non-fatiguing: glides easily over the floor

AW104 \$976.93

### New & Improved



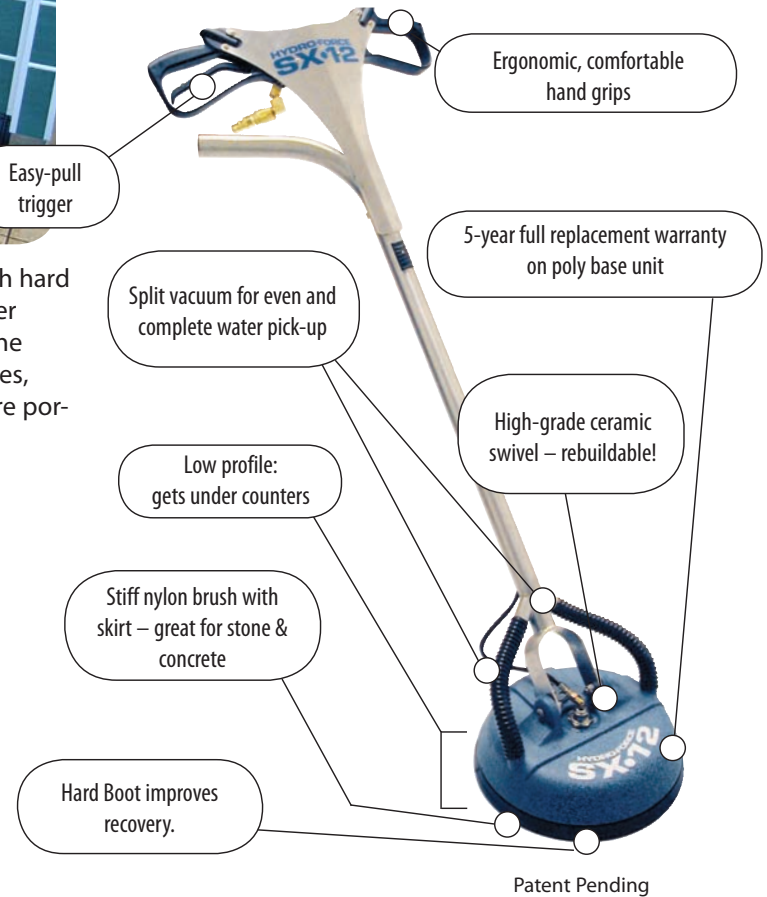
Welded jet housings.



NEW hard boot for hard surfaces and tile.



New compact spinner.



### A. SX7 Tile & Grout Tool

This 7" hand held version on the SX-12 offers the same cleaning action and power. Use it for areas where the full-size SX-12 won't go. Watch the soil disappear from tile and grout lines like magic! Great for tight areas such as small bathrooms and tiled walls in showers and bath tubs. Very handy for counter tops.

AW101 \$533.60

### B. Gekko Hand Tool

Clean counter tops, around toilets, shower stalls, or any tight or hard to reach area. This hand tool is especially effective at blasting dirt and build up from grout lines. Max pressure: 2,600 psi

AR52 \$308.20





### A. Gekko Stainless Steel Wand with 5" Head

Works with any truckmount or high-pressure portable. Concentrates all the water pressure through an amazing spray jet that creates extreme force for cleaning severely soiled grout. Works with pressure from 100 psi to 2000 psi. Primarily used as a detail tool for corners or edges. May be needed for some grout lines with extreme soiling. The wand and five different Gekko heads can each be purchased separately.

AR54 With 5" Head \$378.35

### B. SX7 Stand-Up

The SX7 concentrates extra power into a smaller area for extreme cleaning situations. It works extremely well in small areas like bathrooms. Cleans a 7" swath.

AW102 \$717.60

### C. Stainless Gekko Wand

Use with any or all of the five GEKKO heads.

AR54A \$251.85



### Gekko 14" Brush Head

Best for cleaning smoother hard surfaces where extra agitation of a brush is needed.

AR54H \$234.60

Replacement Brush  
AR54B \$20.13



### Gekko 14" Squeegee Head

Best for cleaning where the surface is uneven and/or where exceptional water removal is required.

AR54E \$228.28

Replacement Squeegee  
AX10B \$10.29



### Gekko 5 1/2" Original Head

A must for edging and tight spots. Use where extra power is needed directly on heavily soiled or stained grout.

AR54D \$159.85



### Gekko Edge/Corner/Coving Tool

Cleans corners, edges and coving with one easy stroke. Use the included coving cover and clean the edge of the floor. Easily fits the Gekko wand.

AR54C \$229.94



### SX7 Gekko Head

Attach this head to your versatile Gekko tool for extreme cleaning and for small areas. The SX7 head holds heat and provides stronger vacuum for those rare situations where the SX-12™ is not enough. It works extremely well in small areas like bathrooms.

AR54G \$527.85

**Interchange any of the five Gekko Heads with the Stainless Gekko Wand to create five different tile tools.**

*Wand not included with individual heads.*





**A. Viper Venom**  
**The Industry's Best Selling Tile & Grout Cleaner!**

Viper Venom is a high alkaline cleaner that is loaded with surfactants, solvents and builders that allow it to blast through years of built up grease, oil, filth and stains easily. The first choice of tile and grout professionals, you can count on Viper Venom when "clean" is the only option!

Viper Venom is also very economical because you dilute it according to the situation. Mix at 32 to 1 for light cleaning all the way to 1 to 1 for extreme situations that require extra bite.

*Dilution = 1:1-1:32 RTU pH = 12*  
 CR22GL (gallon) \$23.26

CR22PL (5 gal.) \$98.56

**B. Viper Renew**  
**The Last Resort on Stone, Tile and Grout!**

Viper Renew contains organic acids that remove soils and stains on stone, grout and tile that have been neglected for years. Also perfect when surfaces are clean but stubborn stains remain behind. Viper Renew removes a very thin layer of grout or stone, taking with it all the hard water deposits, soap scum, efflorescence and staining. Viper Renew is the product of choice when all other cleaners have failed!

Viper Renew uses a special organic salt that is twice as effective as phosphoric acid at dissolving mineral deposits and without the unpleasant fumes. With a supply of Viper Renew on your truck you'll be prepared for even the most extreme stone, tile and grout cleaning situations. (Avoid getting on metals!)

*Dilution = 1:1 RTU pH = 1*  
 CH49GL (gal) \$43.00



**A. Spinerger 2**

Use Spinerger 2 for man-made ceramic, porcelain, and quarry tile. It takes care of the mineral scale, soap scum, and imbedded stains often found on restroom and shower tile. This special formula also cuts grease incredibly well and does it without any added solvents.

*Dilution = 1:4 RTU pH = 2*  
 CH42GL (gallon) \$22.07

**B. Spinerger 11**

Great heavy-duty all-purpose cleaner. Spinerger 11 melts away years of built-up grease, stains, and soil, and does it without the use of solvents or caustic builders. Spray it on ceramic porcelain and quarry tile at a 1:4 ratio for heavy-duty cleaning. Dilute it further for routine maintenance cleaning.

*Dilution = 1:4 RTU pH = 11*  
 CH43GL (gallon) \$22.07

**C. Spinerger 7**

Great all-purpose cleaner. Use Spinerger 7 to rinse with after cleaning with Spinerger 2 or Spinerger 11. It's also excellent as a stand-alone cleaner when used in regular maintenance through scrubbing equipment, extractors, or mop and bucket. It cuts and suspends dirt and grease, and leaves floors sparkling clean.

*Dilution = 1 - 20 oz./gal. RTU pH = 7*  
 CH45GL (gallon) \$22.07

**HYDRO-FORCE SX-12**  
 HARD SURFACE TOOL

See page 7

The best tool for blasting soil and dirt from tile, grout, and smooth or rough hard surfaces.



**Foam-Less**

Foam from detergent build-up makes your machine work harder. It can ruin your equipment and cut its cleaning effectiveness. Prevent foam problems by adding Foam-Less through your vac hose or directly into your waste tank. Highly concentrated. Don't let a little foam slow you down!

**Dilution = 1:2oz. / waste tank**  
**CH47GL (gallon) \$24.82**

Use with **Foam Downer**  
 See page 5.



**Premium Grout & Stone Sealer**

Your customers want their stone, tile and grout floors and counters sealed and this is a professional product that really delivers. Premium Grout and Stone Sealer penetrates deep into all grout and absorbent and semi-absorbent stone and tile to protect against water and oil based spills as well as dry soils to keep surfaces looking great for far longer.

The key is a combination of proprietary fluorochemicals and polymers that are far superior to "Home Center" sealers. This is a highly durable sealer that can be reapplied without any special prep other than cleaning.

**Dilution = RTU**  
**CH06QT (quart) \$28.49**

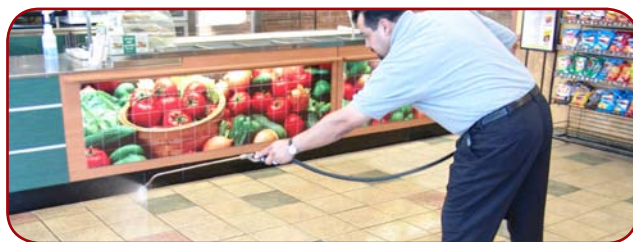
**CH06GL (gallon) \$98.99**



**Solvent-Based Grout Sealer**

This low-odor, solvent-based sealer uses fluorochemical technology for oil, water and soil resistance. It dries in six hours, cures in 48 and won't change the texture or color of the grout. Apply it quickly and easily using the Grout Stick or Hydro Stick.

**Dilution = RTU**  
**CH04QT (quart) \$25.42**



Sample Kit, AX160

Camel - CH30S	Medium Gray - CH36S	Dark Gray - CH38S	Black - CH40S
White - CH26S	Buckskin Beige - CH32S	Mauve - CH34S	Cream - CH28S

Note: Dye swatches at left are for identification only and NOT intended for actual matching. Colors shown at left may vary from actual dye colors. Only use the AX160 sample kit (shown at far left) for matching.

**Clear Grout Sealer, Dyes & Sample Kit**

Add a 2-oz. bottle of dye to a 14-oz. bottle of Clear Grout Sealer to color seal your customer's grout to make it look new again. This process will strengthen the grout and repel dirt and grease. Apply with TurboStick or Grout Stick. The Clear Grout Sealer can be used without the dyes, but the dyes can only be used with the Clear Grout Sealer.

**Dyes (2 oz. jar) \$14.32**  
 (see colors above)

**CH08A (sealer, 14 oz.) \$39.04**

**AX160 (Sample Kit, 1 set) \$5.69**



Dyes







**A. Aggressive Grout Brush & Handle**

This new premium grout brush has stiffer bristles in a tapered configuration that allows you to brush hard right down into the small crevices with greater control and speed. More aggressive than our AB36 brush. Nine-inch brush block fits on a threaded handle. Use with Viper Venom or Viper Renew for incredible results.

- AB35 Brush \$10.24
- AB18M Handle \$9.05

**B. Grout Brush**

Add extra agitation, when necessary, to grout lines from a standing position. The unique pivoting head lets the brush glide along grout lines, in corners and up walls. The stiff crimped, acid resistant nylon bristle is bevel-cut to get into grout lines. A lock-down handle socket securely attaches to a variety of handles.

- AB36 Brush \$20.68
- AB18H Handle \$6.03

**C. Corner and Edge Brush**

A triangular-shaped brush with side-mounted bristles designed to easily and effectively clean along baseboards, tile covering, under equipment and in tight corners. Comes with fiber core pole with non-slip grip. No more scrubbing tight places on your hands and knees!

- AB40 \$80.27



**A. Grout Stick**

The Grout Stick allows you to seal and stain four times faster while staying off your knees! You can apply color, solvent and water based sealer to grout all with the same tool. With its compact head you can easily apply grout sealers to the grout without getting sealer all over the tile. The Grout Stick includes three different brushes and a clean-up sponge.

- AR56 \$74.18



**B. Grout Wand**

The design of the sonic welding on the Grout Wand has been improved to make the "Action Head" more durable. New solvent resistant "o" rings reduce the damage to components caused by solvent-based sealers. Easily applies the proper amount of sealer in one application with professional results. Push down and the sealer is applied, let up and the flow of sealer stops.

- AR57 \$18.34



**Replacement Head**

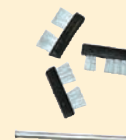
- AR57P \$9.66



**Injectimate Grout Sealing Kit**

The Injectimate Grout Sealing Kit takes application of water based grout sealers to the next level. This kit, when used with Injectimate, gives you total control of the amount of sealer applied. The flow of sealer stops after each squeeze of the trigger. Use the 3-foot extension tube to apply sealer to floor grout while standing and the 4-inch tube to apply sealer to the counter top and wall grout. You don't want to seal grout without this tool!

- AC13A Grout Sealing Kit \$53.65
- (Injectimate and bottle sold seperately)
- AC13 Injectimate \$42.49



## Tile, Grout, and Hard Surface Cleaning System

### 1. Pre-Spray

For extra heavy soil and grease, use Viper Venom. For Extra heavy acid side cleaning, use Viper Venom. For common soil or greasy surfaces, use spinergy 11. For hard water scale and soap scum, use Spinergy 2.

### 2. Pressure Rinse

Clean and rinse using the SX-12 Hard Surface Tool and Spinergy 7 neutral rinse.

### 3. Edge Cleaning

Use the Gekko Stand-Up tool for edging and direct blasting of grout. Use the SX7 for tight spots, counter tops, or vertical surfaces.

### 4. Dry and Seal

Use Hydro-Force Premium Stone and Grout Sealer or restore stained and discolored grout with dyes added to Clear Grout Sealer.



### Hydro-Stick

Seal and color grout while on your knees with more grout control and less adjustment than with the Grout Stick. Use with clear or colored sealers as well as solvent or water-based sealers.

AR55 \$22.94



### Tile & Grout Postcard

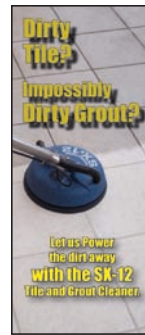
Full-color customizable post cards. Front side shows the SX-12 in action. Reverse side is customized by our graphics department with your message. Talk to your sales rep about placing an order.

LP36 Call for pricing

Do you think your tile is clean?  
You won't believe the difference!

SX-12 By HydroForce. Joe's Carpet Cleaning  
Introducing the best 453 W. Avenue  
tile and grout tool in Anytown, ST 98765  
the world. Use the SX-12 with your existing truckmount and gain thousands of dollars in new business.

Call for a free demonstration!  
CALL  
1-800-678-986



### Tile & Grout Brochure

Full-color consumer brochure. This beautiful tri-fold brochure makes it easy to sell your tile and grout service.

LP115 Call for pricing

## Accelerated Tile & Grout Cleaning Technician Training Module

This fabulous program contains exhaustive information on maintaining tile and grout floors. The technician gets to read, listen\*, and watch as their instructor takes them through the processes of cleaning, sealing, and even repairing tile and grout. You and your technicians will learn this complete system in an easy and fun format.

- Stone and tile identification
- Grout composition
- Chemical preparations
- Extraction using the SX-12
- Sealing of grout and tile
- Detail work

\*The module also has a Spanish voice track.

JS090 \$263.35



### Water Otter™ Power Washer

- Commercial Duty Portable
- American-Made Pump and Motor
- 1,200 psi, 2.2 GPM at Nozzle Tip
- 14.3 Amp High Efficiency Motor
- Maintenance-Free 1,200 psi Pump
- 1,000 Hour Continuous, Full Load Rated
- Simple Repair, Low Cost Parts
- Each Component The Best Available
- GFCI with 35' Cord
- Female Garden Hose Inlet
- 1/4 Female Quick Connect Outlet
- Max Water Temperature 180°
- 120 Volt, 8 to 15 amps

AS1200 \$1068.35





# Versa Pro™

## Rotary floor machine

MH48 \$1058.85

### Clean Every Floor Surface Possible

The VersaPro is a rotary floor machine that allows you to expand into all types of floor care services without investing thousands of dollars in many different machines. Since consumer flooring is shifting away from carpeting, it makes perfect sense for today's professional to be prepared to care for different types of flooring. This machine makes that possible!

With the VersaPro, you get the versatility of five or six different types of machines for the cost of one! You can:

- Choose the size of your cleaning path with interchangeable aprons in 13", 15", 17", 19" or 21" sizes.
- On carpet, you can agitate presprays or use encapsulation or bonnet cleaning methods! Or attach the 4 gallon solution tank to shampoo carpets.
- Use with a maroon pad or sand screen to clean and prepare hardwood floors for recoating.
- Strip, wax and buff VCT floors.
- Clean tile and grout.
- Use the Unicorn & Weight Kit to hone and polish marble and stone floors.

A machine designed to do many different kinds of jobs has to be made tough enough to do all of them well. The high-torque, triple-planetary gear system and 1.5 HP precision balanced, super heavy duty 66-frame motor means that this machine will handle the most demanding jobs, will not bog down and will last a long, long time.

#### The Key to the VersaPro's Versatility!

The key to the VersaPro's ingenuity is the different apron sizes they offer. Rather than buy one rotary machine in each size, all you have to do is a simple change of the apron on the VersaPro to get the cleaning path that you need for the job. All aprons come with non-marking full bumpers.

AC913A	13" Apron w/Bumper	<b>\$70.08</b>
AC915A	15" Apron w/Bumper	<b>\$93.52</b>
AC917A	17" Apron w/Bumper	<b>\$100.04</b>
AC919A	19" Apron w/Bumper	<b>\$116.28</b>
AC921A	21" Apron w/Bumper	<b>\$122.80</b>

#### Care for Stone and Marble

To turn the VersaPro into a machine suited for honing and polishing stone and marble, add the Unicorn and Weight Kit. The Unicorn balances the weight evenly over the machine, giving the pressure you need to get the job done!

MH48W Unicorn and Weight Kit **\$126.80**

#### For Encapsulation Cleaning and Carpet Shampooing

The carpet shampoo brush comes in 5 different sizes so you can agitate presprays or perform encapsulation cleaning. Add the 4 gallon solution tank for carpet shampooing. (Fits any rotary floor machine.)

AC913B	Carpet Shampoo Brush, 11" Fits 13" Machine	<b>\$79.52</b>
AC915B	Carpet Shampoo Brush, 13" Fits 15" Machine	<b>\$104.19</b>
AC917B	Carpet Shampoo Brush, 15" Fits 17" Machine	<b>\$133.98</b>
AC919B	Carpet Shampoo Brush, 17" Fits 19" Machine	<b>\$178.54</b>

AC921B	Carpet Shampoo Brush, 19" Fits 21" Machine	<b>\$198.17</b>
AC96	Shampoo Tank, 4 Gal.	<b>\$110.23</b>

#### For Bonnet Cleaning and VCT Floor Care

For bonnet cleaning or VCT floor care, match the pad driver to the apron you'd like to use for the job. Then add the appropriate bonnet or floor pad for the job!

AC913	13" Pad Driver	<b>\$64.75</b>
AC915	15" Pad Driver	<b>\$77.58</b>
AC917	17" Pad Driver	<b>\$89.70</b>
AC919	19" Pad Driver	<b>\$100.59</b>
AC921	21" Pad Driver	<b>\$116.82</b>

#### For Tile and Grout

With tile and grout cleaning rising in popularity (and profitability!), you can clean tile and grout by attaching the tile cleaning brush, and let the powerful agitation of .022: DuPont Tynex bristles do the rest!

AC913C	Tile Cleaning Brush, 11" Fits 13" Machine	<b>\$167.24</b>
AC915C	Tile Cleaning Brush, 13" Fits 15" Machine	<b>212.69</b>
AC917C	Tile Cleaning Brush, 15" Fits 17" Machine	<b>\$256.28</b>
AC919C	Tile Cleaning Brush, 17" Fits 19" Machine	<b>\$315.94</b>
AC921C	Tile Cleaning Brush, 19" Fits 21" Machine	<b>\$372.91</b>

Specifications	Air King AC081	Air King Plus AC082
Pivoting Head Blower	X	X
3 Speed	X	X
Two 120 volt grounded outlets	X	X
Industrial Cord	X	X
UL Listing	X	X
Ten foot cord with grounded plug	X	
Ten foot cord with GFCI plug		X
Amp draw on high setting	0.8	0.94
Velocity measured feet per minute	2750	3500

**Air King**  
Industrial Products®



Air King

Air King Plus



AC081 \$78.67

AC082 \$114.94

Direct air where needed with an infinite number of blower head positions. The Air King is great for small enclosed areas during flood restoration. The uses are endless. The Air King can be plugged one into another to string up to 12 blowers in a line for greater air movement and faster drying times. One 15 amp circuit will run 15 - 18 blowers (depending on the model) at the same time.

- Speed dry upholstery and carpet after cleaning or when spotting
- Flash dry hard surfaces after cleaning and mopping, or when applying floor finishes
- Use to cool you while working in the heat
- Plug other electrical tools directly into the Air King
- Maximum air velocity - Air King is still pushing air 50 feet from the unit
- Rugged, easy-to-carry handle

### OmniDry 33

Get the lowest amps with the highest airflow. The 3-speed OmniDry 33 delivers up to 2200 CFM at approximately 3.9 amps, is stackable, comes with a 25' power cord, and a built-in cord wrap.



- 3-Speed 1/3 Horsepower Motor
- Power: 115 VAC, 60 Hz

Speed	RPM	AMPS
High	1050	3.9
Med	850	3.0
Low	650	2.45

- Directional Airflow
- Balanced airflow for quieter operation
- Units nest for ease of stacking during storage and handling
- Ergonomic handle

AC24A \$224.19

### Focal Point Axial Air Mover

The Focal Point Axial Air Mover focuses velocities of 0 to over 23.5 feet. Focus™ Technology directs air flow towards problematic corners (wall & floor), carpet and wall, or subfloors. The Axial Air Mover also features:



- 3000 cfm, long-life 2-speed motor, featuring Permanwick® Lubrication
- 2.5 amps
- Stackable feature
- Balanced carry handle
- Cord wrap

AC246 \$399.46



**NEW**

### OmniDry Wall and Cavity Dryer

The OmniDry Wall is a pressurized drying system that makes drying wall cavities easier and less frustrating than before. Perfect for under sinks, behind cabinets and permanent furniture. Its portability makes drying a breeze. All in one containment allows for easy transportation and almost no setup time. Just bore a half inch hole, insert the hose end and begin drying!

AC8400 \$608.35

- FEATURES:
- 2-stage tangential by-pass
  - 120vac • 9.3 amps
  - 1200 watts
  - Over 2600 LPM
  - Double ball bearing construction
  - Lightweight and compact
  - Units interlock for ease of stacking during storage and use
  - Injects warm dry air



## Octi-Dry

A New Way to Dry Wall Voids and Under Floors Even Faster!

One of the best ways to prove how valuable you are to adjusters is to save walls and floors that would otherwise be torn out and replaced at enormous expense. The Octi-Dry forces warm air through wall structures or under floors for more complete structural drying. You can run up to five Octi-Dry's from a single airmover.



AC511 Octi-Dry for use with standard air movers

AC511 (standard airmover) \$381.80

## Lay Flat Ducting

Strong, 4.5-mil poly ducting for nearly any application. Use as much as you need for various sized jobs. Send the air where ever you need it to go. 500 feet per roll.



AC262A 22.5"x500 ft. (for 14" duct) \$154.68  
AC251A 16.375"x500 ft. (for 10" duct) \$114.94



## ZipWall™

Whenever separation and control of your work area is required, ZipWall is the answer. ZipWall Spring Loaded Poles hold plastic sheeting (not included) wherever needed. The ZipWall Kit comes with two Poles, two Non-Skid Plates, and two GripDisks.

AX05 12' \$156.96

AX03 20' ZipWall Kit \$241.39

## Zipwall™ Zippers

ZipWall Zippers allow access to the ZipWall chamber.

Package of two:  
AX05A \$22.63

## Zipwall™ Carrier Bag

AX05B \$85.04

## Zipwall™ GripDisk™

For use on slick floor surfaces.  
AX05C (2 pack) \$8.41



## Foam Rails & T-Clips

This five foot Foam Rail presses the plastic sheeting (not included) to the ceiling, creating an extremely tight seal without tape. 2 pack  
AX05F \$93.75



## Side Clamp

The Side Clamp ensures a tight seal against the wall. 2 pack  
AX05D \$54.59





## MMS Plus by Protimeter - Improved & Faster

This meter is a complete moisture measurement system in one easy to use robust instrument. The hygrometer mode measures relative humidity, ambient temperature, dew point and grains per pound. The pin measure mode determines moisture content of wood and wood moisture equivalent in other building materials. Pinless measure mode uses radio frequency to detect moisture non-invasively. Comes standard with Humistick measuring from 0 to 100% relative humidity.

AC101      \$1472.00



## Hammer Electrode by Protimeter

Measures moisture to a depth of 1.38". Can be used with MMS Plus and Survey Master.

AC102      \$240.35



## Surveymaster by Protimeter

The first meter to include both popular methods of measurement in one ergonomic design. The pinless mode finds moisture up to 1" below the surface and is not adversely affected by surface moisture. Change to pin mode and you can determine if the moisture is surface or sub-surface. Complete with zip pouch, calibration check device and two AA batteries.

AC99      \$677.35



## Aquant by Protimeter

The GE Protimeter Aquant is a noninvasive rapid test moisture meter for a wide range of building and construction materials. Features: • Adjustable auto off • "Zero out" for temperature compensation • Audible tone • LCD and color changing LED display

AC110      \$435.85



## Sonin Moisture Test Tool

Great for cleaners, inspectors, contractors, adjusters and homeowners to find out if excess moisture is present. Press the metal contact into surface to determine extent of moisture problem. The more lights on, the higher the moisture level. (9 volt battery not included)

AC792      \$18.39



## Sonin 4 In 1 Multi Function Detector

Detects wood and metal studs, beams and joists behind walls up to 3/4" deep. • Detects Moisture percentages 8 - 22% • Find potentially damaging excess moisture. • Locate and trace water leaks to prevent wet rot. • Non contact voltage detection helps you trace or locate live AC wire behind walls, ceilings up to 2" deep. • Detect & locate hidden metal, steel and copper pipes, and frames (both ferrous & nonferrous) behind walls up to 2" deep. • Fast, accurate, & easy to read LED display. • Microprocessor based.

AC793      \$34.44



## Sonin Moisture Test Meter

The moisture test meter is designed to alert users to possible moisture problems. The metal contacts at the end of a 3' coiled cable detect moisture present in difficult to reach locations. Extremely useful in water restoration, urine detection, etc.

AC72      \$45.94



## Pocket Thermo-Hygrometer by Extech

The Pocket Thermo-Hygrometer measures temperature and humidity simultaneously. Use it for all water damage and drying situations. It contains both maximum and minimum memory functions for both humidity and temperature. °F to °C switchable

AC28      \$80.21





### HydroSensor I & II by Dri-Eaz

Map the migration of water in carpet and pad without straining your back. The HydroSensor I has a 31" reach to save your knees and posture. Sensitive nickel-plated points alert you to moisture content above 17 percent. Use only on carpet and pad. The HydroSensor II has a collapsible shaft that extends to 31" and collapses to 21".

AC61 HydroSensor I - 31" \$178.25

AC60 HydroSensor II - Collapsible \$212.75



### Hygro and IR Thermometer by Extech

One tool measures humidity, ambient air and surface temperatures, even in difficult to access areas. This versatile meter has a 39 inch remote probe for easy access to ducts and vents. Essential in evaluating temperature and humidity during water damage restoration. Complete with auto power-off, data hold and max, built in stand, protective holster, and case. 9-volt battery included.

AC108 \$200.50



### Datalogger Temperature & Humidity Data Logger with USB Connector by Extech

The Datalogger is Windows 95/98/2000/NT/ME/XP compatible. Wide operating range from 0 to 100% RH and -40 to 185 degrees F. Place individual dataloggers in various locations to make accurate decisions on a case by case basis. Records for downloading relative humidity and temperature readings over time, which are necessary for accurate decisions in water damage restoration situations. Sampling rate can be set from 1 second to 2 hours. 3.6-volt lithium battery included. Software included.

AC117 \$97.23



### Precision Psychrometer by Extech

The Precision Psychrometer features a dual backlit display and simultaneously displays the Humidity/ Temperature, Humidity/Dew Point, or Humidity/Wet Bulb. It has a slim design with rubberized sides for better grip and for one hand operation. The Precision Psychrometer has an accuracy of +/-2%RH, +/-1.8°F/1°C. There is a low battery indicator and the Psychrometer features an auto off to help conserve your battery life. It comes complete with a carrying case and 9V battery.

AC113 \$218.44



### Precision Hygro-Thermometer by Extech

The Precision Hygro-Thermometer has all of the same great features as the Precision Psychrometer (AC113). It also has the ability to measure water vapor in GPP.

AC114 \$344.99



### Mini Thermo-Anemometer by Extech

Displays air velocity, temperature, or windchill. Helps evaluate ventilation issues indoors, airflow for water damage restoration, and determine local weather conditions. Pocket size with averaging functions set at various intervals. CR2032 lithium battery included.

AC105 \$125.15



### IR Laser Thermometer by Extech

This non-contact point-and-measure infra-red laser thermometer provides fast, easy, and accurate readings for most surface temperature readings. Determines surface temperature of various equipment in use as well as differences of surface temperature during the process of water damage restoration. This compact unit measures up to 500 degrees F, has backlighting for use in dark areas and has automatic power-off. 9-volt battery included.

AC107 \$95.27



### Extech™ pH Meter

ExTech™ pH Meter has a unique Flat Surface Electrode™ that allows for wider applications including on-the-spot surface measurements. It features a waterproof design with a rubberized housing which provides non-slip grip. The plug-in electrode is easy to clean and maintain.

AU45 \$108.96 AU46 pH 4 Buffer Solution \$20.38

AU47 pH 7 Buffer Solution \$20.38 AU48 pH 10 Buffer Solution \$20.38

### Hydro-Zone Ozone Generator

Don't let the compact size and sleek look of this ozone machine fool you. With a lifetime warranty on the patented ozone generating electrodes and body, this machine produces more ozone than machines three times its size. Eliminates smoke, pet odors, mold, mildew, and other odors. It is excellent for freshening up cars, buses, boats, and aircraft. Effective for areas up to 40,000 cubic feet and has a 30-hour programmable timer with adjustable ozone output levels. Hydro-Zone comes with a power supply overload protection and each unit is tested and proven to maintain proper activated oxygen levels. It contains high-density ceramic and stainless steel electrodes and there are no plates or UV tubes to maintain. It comes with a three-year limited warranty on parts and a lifetime warranty on ozone electrodes (patented) and body.



AS31 \$1179.26

### Sonozaire, Ozone Neutralizer

By generating a stream of odor-destroying ozone from the oxygen in the air, this unit converts smoke odors into harmless, odorless CO2 and water vapor. Odors from smoke damaged carpets, etc. are banished forever. Then, the unused ozone simply reverts back to ordinary oxygen, leaving no perfume or unpleasant fragrance behind!

AS37 Sonozaire 5G \$1604.25

AS34 Sonozaire 115A 2 Grams/hr. \$1032.70



- Treats areas 6,000 to 150,000 cubic feet
- 5 grams per hour and 239 cfm
- 12-hour timer with continuous-on feature
- Minimal maintenance
- Small and lightweight
- High ozone output
- Reduces treatment time

- Uses no chemicals, perfumes, or masking agents
- Actually destroys odor molecules
- Operates unattended
- Prevents odor from returning
- Portable: plugs into standard outlet



### PureMist™ Fogger

The compact and stable PureMist™ fogger is the best choice for open-area and sub-surface deodorizing and disinfecting with water-based deodorizers and disinfectants. On fine settings, the PureMist™ atomizes 95% of its output to particles of 20 microns. On heavy settings, 95% of its output is below 60 microns! The PureMist™ has variable output ranging from 0-18 oz. per minute. There is an adjustable flow control valve and a flexible 32" directional hose. The supply tank is corrosion-proof.

AS40 \$431.16

### Hot Fogger, Electric

This versatile fogger creates a dry fog, similar in nature to the smoke created by fire. This dry fog follows the path of smoke and neutralizes the odor. Can be used as a solvent sprayer by simply removing the heating barrel. Comes with durable aluminum solution tank.

AS42 \$260.33

PBU02011 Hot Fogger Pump Repair Kit \$13.46



### Golden Eagle Hot Fogger

The Golden Eagle is the ultimate tool for the professional restorer. With a truly "dry fog", this fogger breaks down solvent deodorizer to as small as .5-micron size and dispenses an amazing amount of fog in just a few seconds. The Golden Eagle comes with an electric starting system which eliminates hand pumping and increases reliability.

AS39 \$2160.85





## VAPORTEK VAPORTEK VAPORTEK VAPORTEK

TREAT ATMOSPHERE, CONTENTS & STRUCTURE SIMULTANEOUSLY.

Vaportek odor control systems provide immediate odor neutralization in situations where other methods may fail. These systems incorporate natural, non-toxic essential oils and odor neutralizing compounds in patented membrane cartridges that breathe a penetrating dry vapor into the air. Unlike fogging and

ozone treatments, Vaportek products can be used in occupied structures. They will not harm people, plants or animals, or affect fabrics, rubber, adhesives and other materials and surfaces. Vaportek's unique technology provides safe, effective treatment for all types of odors confronted by cleaning/restoration professionals.

### The Restorator

The Restorator is an ideal unit for treatment in vehicles and areas up to 20,000 cu.ft. Load the compact machine with an industrial cartridge and turn it on. Cartridges are rated for up to 270 hours of service. After initial restoration, secondary cartridges may be used to diffuse a pleasant scent into the area.

AR38 \$274.85

### High-Output Cartridge

Exclusively for the Restorator

AR39 \$78.20



AR39S (S.O.S) \$78.20

### Secondary Scented Vaportek Cartridges

- AR48B- Berry \$71.19
- AR48C- Citrus \$71.19
- AR48D- Orchard \$71.19
- AR48E- Forest \$71.19

### Heavy-duty Stand Alone Cartridge

Place this unit in an air duct or in front of a carpet dryer and allow the air flow to carry the vapors to a large area. It contains the odor neutralizing industrial membrane. Rotating end caps can be adjusted to give exactly the right output. When treatment is complete, rotate end caps closed to conserve for later use.



- Cartridge AR46 \$82.23
- S.O.S. Cartridge AR46S \$82.23

### Portable Industrial

This lightweight unit is designed for treating large areas. It holds up to 10 odor-neutralizing industrial membranes and treats areas up to 200,000 cu.ft. Ideal for the professional restoration specialist with large-scale odor problems.



AR42 \$1398.40



This versatile machine is ideal for use in small to medium areas. Treats up to 50,000 cubic feet. Uses up to five VaporShark membranes. One for small jobs or five for larger jobs.

- Convenient two-inch coupling for attaching a hose and directing vapor as required.
- Typical membrane life is 270 hours.



AR49 \$687.13

### VAPORSHARK MEMBRANE

- AR49M \$41.34
- AR49L (Lemon) \$41.34
- AR49S (S.O.S) \$41.34

### SOS-Smoke Odor Solutions

Vaportek now offers "S.O.S" fragrances that are specially formulated for use in fire and smoke restoration situations. The pleasant-yet powerful and effective-fragrance makes it ideal for treating smoke odors and enhancing the work environment for restoration specialists. The new S.O.S. formulation is available in cartridges for the Restorator and membranes for the VaporShark and Portable Industrial units.

**IDEAL FOR**  
Protein Fires • Wood/Paper Fires • Synthetic Fires • Cigarette Smoke

### Membrane for Portable Industrial

Using rotation schedule, membranes remain effective up to 1,080 hours

AR44, AR44L (Lemon), or AR44S (S.O.S.) \$68.97

VAPORTEK SYSTEMS PROVIDE A SAFE, EFFECTIVE ALTERNATIVE TO OZONE. THEY ARE NOT RECOMMENDED FOR USE WITH OZONE-GENERATING EQUIPMENT.

## Dehumidifiers

Proven experience. Superior performance. Dri-Eaz has built a 20-year legacy of advancements in dehumidifier design. Dri-Eaz has the right dehumidifier for your professional needs. All are loaded with practical features that make your job easier. Each is designed to dry structures fast and completely.



Model	Price	Power	Operating Range	Water Removal AHAM (80%/60%RH)	Use Weight	CFM Rating
A. DEHUMIDIFIER EVOLUTION® LGR - AC52	\$1953.85	5 amps	33°to 100°F	70 pt/day	92 lb	160
B. DEHUMIDIFIER DRIZAIR®LGR 2000 - AC54	\$2576.00	8 amps	33°to 100°F	110 pt/day	132 lb	320
C. DEHUMIDIFIER DRIZAIR®2400 - AC51	\$3103.95	11 amps	33°to 100°F	146 pt/day	162 lb	365
D. DEHUMIDIFIER DRIZAIR®1200 - AC84	\$1562.85	6.4 amps	33°to 100°F	64 pt/day	80 lb	227
E. DEHUMIDIFIER DRITEC®150 DESICCANT - AC604	\$3559.25	8.7 amps	0°to 100°F	27.5 pt/day*	29 lb	88

\*68%/60% RH

## Airmovers

Dri-Eaz created the original airmover for restoration – the legendary TurboDryer® – and now sets a new standard for reliability, durability and performance in air movement. All three new Sahara TurboDryers sport exciting new features – an underbelly air vent to dry under the TurboDryer, a more ergonomic handle, and easily removable parts for faster cleaning. All Dri-Eaz airmovers are built with high-quality components, rugged poly housings, molded handles, and safety as a priority.



Model	Price	Power	Motor	Speeds	CFM Rating Max	Static (IWC) Pressure
F. DRYER SAHARA PRO X3 - AC631	\$379.50	4 amps	0.4 hp	3-speed	2700 CFM	2.8"
G. DRYER SAHARA HD - AC651	\$493.35	10 amps	1.0 hp	3-speed	3500 CFM	2.75"
H. DRYER SAHARA E - AC621	\$297.85	7.2 amps	0.25 hp	1-speed	2250 CFM	1.24"
I. JET CXV TURBODRYER® - AC661	\$481.85	1.5-3 amps	0.25 hp	3-speed	3250 CFM	N/A
J. DRYER VORTEX - AC73	\$631.35	7.4 amps	1.0 hp	1-speed	2041 CFM	3.2"
DRYER AIRWOLF (not shown) - AC600	\$631.35	8.5 amps	1.0 hp	1-speed	800 CFM	7.75"
DRIFORCE® INTERAIR DRYING SYSTEM (not shown) - AC58	\$2241.35	4.8 amps max, 3.0 amps avg	N/A	1-speed	100 CFM	60"





### Studebaker AirPath™

One of consumer's biggest complaints about professional carpet cleaning is dry time. In fact, that's one of the main reasons they put off getting their carpets cleaned! Now you can dry carpets faster than ever before with the AirPath Studebaker from Dri-Eaz!

The AirPath's aggressive, patented 360° air stream makes it the fastest drying system in the industry! You'll easily dry one room while the next one's being cleaned!

The AirPath has a 1 HP motor that delivers a high velocity 40 MPH airflow! It can be tilted to dry stairs, has a two-speed switch, is highly portable with locking wheels for drying hard floors and is even stackable!

AC611 \$603.75

- High velocity 40 MPH airflow!
- Patented 360° outlet grill design
- Uniformly directs air across floor
- 1 HP Motor with 2-speed switch



**DRI-EAZ®**



### Activo Ozone Generator

Perform fast deodorization jobs safely and efficiently with the powerful Activo Ozone Generator. The unique fully automated deactivation cycle apidly clears an area of ozone, minimizing the time until it's safe to return to the area.

- FULLY AUTOMATIC ozone generation and patented ozone removal
- HIGH OUTPUT of 12,000mg/hr of pure ozone
- LCD reports the time required, including ozone removal
- PORTABLE, rugged steel construction
- 265 CFM OZONE DISPERSION – no airmovers required
- Buzzer alarm and bold flashing alert light for added safety

AS38 \$4824.25

Dimensions:	39.37" x 19.69" x 15.75"
(HxWxD):	(100 x 50 x 40 cm)
Output:	12 grams/hr (12,000mg/hr)
	265 CFM
Weight:	88.18 lbs (40 kg)
Ozone Post	
Treatment System:	Inbuilt catalytic converter
Max Cubic Feet:	17,000 cu ft (about 480 cu m)



### Rover HVE Floor Extractor

*360 Maneuverable Rover HVE*

The new Rover HVE (high-volume extractor) offers deep extraction with exceptional maneuverability and the industry's best performance on all types of carpets, even commercial.

- Patent-pending HEAD MAXIMIZES EXTRACTION
- Joystick provides for 360°MANEUVERING
- EASILY MONITOR EXTRACTION through the clear take-up tube
- Interchangeable polymer GreenGlide
- LED LIGHT ILLUMINATES FLOOR in darker environments
- COLLAPSIBLE ERGONOMIC HANDLE for space-saving storage
- INTEGRATED TRANSPORT WHEELS for easy loading

AC608 \$3904.25

Use weight:	67 lbs
Extraction path width:	19.75"
Dimensions:	(50.2 cm)
(HxWxD):	45.7"H x 22"W x 27.6"D
Amp Draw:	3 amps

### DefendAir® Hepa 500 - Air Scrubber/Negative Air Machine

*The new standard in air scrubbing*

- CUSTOMIZABLE– Use 1 unit alone for up to 500 CFM HEPA filtration, 2 units for 1000 CFM, or 3 units for 1500 CFM. Spread around the room for more coverage.
- DAISY CHAIN LINKAGE– Connect up to 3 units together for 1500 CFM on just 1 power outlet
- MODULAR VERSATILITY– Stack up to 2 units, or spread around the room for more coverage

AC35 \$1033.85

Dimensions:	24.6 x 26.2 x 18.2 in
(HxWxD):	(62.5 x 66.5 x 46.2 cm)
Weight:	44 lb (20 kg)
CFM Rating:	MIN- 250 CFM (428 CMH)
	MAX- 500 CFM (856 CMH)
Filter System:	2-stage with optional carbon filter
Primary Filter:	HEPA filtration technology

### Breaker Buddy

Plug the Breaker Buddy in to two separate outlets and if the green light comes on you are on separate circuits. Helps avoid tripping breakers on dual cord machines or when using accessories like an RX-20 or separate electric heater.

AX49 \$79.90



### Shockbuster

Protects from hazardous electrical shock. This GFCI adapter plugs into any 3-prong AC outlet and converts it to a safety outlet. Simply plug your appliance or tool into Shockbuster. Shockbuster instantly detects ground faults caused by leakage currents and shuts off power to avoid electrocution.

AX126 \$19.49



### Bluebook Cost Guide

The 2008 Edition of Cleaning, Reconstruction and Repair Costs

- Reports average subcontractor prices for nine different zones in the country, (it does not establish prices).
- Helps validate contractor prices for insurance companies.
- Enables contractors to evaluate their own pricing structure for their part of the country.



LM82 \$102.35  
 Pocket Blue Book (LM83) \$47.83  
 Blue Book on CD (LM87) \$80.44



### IICRC Standards

IICRC Standards for Carpet Cleaning S100 4th Edition  
 LM89 \$44.28

IICRC Standards for Water Damage Restoration S500 3rd Edition  
 LM91 \$143.75

IICRC Standards for Upholstery Cleaning S300  
 LM95 \$28.75

IICRC Standards for Mold Remediation S520  
 LM96 \$149.50

### Flood King

This new and innovative design has increased the efficiency of the airflow by top mounting dual 3-stage vacuums, thus eliminating stand-pipes and bends into the tank. This significantly reduces restrictions in airflow and increases efficiency. The 3-stage vacuums only use 13 Amps of power with one cord which is ideal for flooded sites where power may be limited.



The Flood King's ergonomic and lightweight design makes it easy to handle by one person with little or no bending or stooping. Large rear wheels carry the Flood King up and down stairs or nearly anywhere you need it to be, to complete the job with little effort or strain.

#### Features:

- Dual top mounted three-stage vacuums for improved performance
- Dual pumps for continuous pump out of the recovery tank at 10.5 gallons per minute
- Single cord operation at 13 amps
- Improved three-stage filtration system
- 2" x 25' vacuum hose
- 3/4" x 50' discharge hose
- Durable rotationally molded body with lifetime warranty

MD02 \$3208.50



### Vapor Cleaning Machine

- Voltage - 110/120 volts
- Amps - 12
- Operating Pressure - 0-70 psi
- Operating Temp. (in boiler) - 260 ° F
- Operating Temp. (surface) - 215 ° F
- Water Capacity - 3 quarts



The Hydro-Force Vapor Cleaning Machine is the commercial steamer for chemical and mess-free cleaning. Use in commercial kitchens, supermarkets, or anywhere that demands a chemical-free environment. With live steam, the Hydro-Force Vapor Cleaning Machine cuts grease, mold, mildew, aged-on contaminants and a mountain of other substances. A heavy-duty stainless steel body will take serious punishment. Easy-to use attachments adapt to any job. Clean for up to two hours on one three-quart tank of water.

MB07 \$861.35



## Dry Cleaning Sponge

These rubberized sponges are designed to remove soot from fires in a dry state. The tiny porous cells of the sponge lift soot from surfaces quickly without smearing. May be reused many times by washing. Ideal for painted surfaces, wall paper, acoustical tile, paneling, lamp shades, paintings, and other surfaces. Individually wrapped. 36 to a case.

**AX26 (6x3x2") \$3.61**

**AX27 (8x3x2") \$4.55**



## Leather Work Gloves

Multi-purpose leather work gloves come in handy in any number of situations. Made from full-grain pigskin and DuPont Kevlar threading, these gloves are incredibly durable and comfortable to wear.

**AT63 Work Gloves Large \$17.11**



## The Fixi-Clamp

Get a grip on those hard-to-reach cleaning problems. The Fixi-Clamp grips sponges, rags, chamois and mops simply by tightening the locking collar. Combine with a telescopic pole for an instant high-rise cleaning tool!

**AX50 Fixi-Clamp Head \$36.88**

**AX64 18' Extension Pole \$88.52**

**AX66 8' Extension Pole \$47.99**



## Hazmat/Flood Boot

The Hazmat Boot is made of latex rubber and has a textured sole to reduce slipping. It's completely waterproof and made specifically for flood work, hard surface cleaning or anywhere wet feet might be a problem. Fits over existing shoes. Durable enough to be re-used. Affordable enough to be disposable. Per pair.

**AX13A Large (fits sizes 7-9) \$8.50**

**AX13B X-Large (fits sizes 10-12) \$8.50**

**AX13C XX-Large (fits sizes 13+) \$8.50**



## Dust Cloths (Treated)

For smoke and fire restoration. Attracts dust, smoke and residue. 18"x24" disposable. Package of 50.

**AX08 \$16.04**



## Tyvek Suits

This limited-use Tyvek coverall offers outstanding protection against dusts, soot and other soils. Lightweight, comfortable and economical, it features a zippered front, attached hood and boots, and elastic wrists.

**AX97 Medium \$6.52**

**AX97A Large \$6.52**

**AX97B X-Large \$6.52**

**AX97C XX-Large \$6.52**



## Chemical Resistant Gloves

*Heavy Duty & Reusable*

Protect your hands when using solvents or any liquid cleaning agents. Made out of durable nitrile, and flock-lined for comfort.

**AX94 X-Large \$4.45/ pair**

**AX94A Medium \$4.20/ pair**



## Nitrile Disposable Gloves

*Chemical Resistant & Disposable*

Thin Mil Nitrile disposable gloves. 100% Nitrile provides superior durability and toughness for light-duty chemical and liquid-resistant applications. This 4 mil glove provides three times more puncture resistance than thicker mil vinyl and latex rubber gloves. 100 gloves per dispenser.

**AX94D X-Large \$18.34/ box**

**AX94B Large \$18.34/ box**

**AX94C Medium \$18.34/ box**



## Drop Cloth

9' x 12' absorbent paper with leak-proof back. Great for overspray protection and restoration work.

**AX74 \$7.99**



## Vinyl Disposable Gloves

5 mil disposable vinyl gloves are strong and economical. Excellent for light-duty chemical and liquid-resistant applications. Contains no natural rubber. Lightly powdered for worker comfort. 100 gloves per dispenser.

**AX93 Large \$11.49/ box**

**AX93A Medium \$11.49/ box**



## Dust Mask

This mask is essential in reducing exposure to particulate matter encountered in restoration and cleaning situations. 50 per package.

**AX96 \$10.11**



### Neo Knees

Made of black leather with ¾ inch neoprene rubber which fully supports knees from both downward and side pressure. Fully adjustable 2 inch wide neoprene strap. Neo Knees are water and oil resistant offering great wear resistance on any surface.



AU23 \$45.94

### Wrap Around Safety Glasses

- Custom fit. 4-way adjustable temples assure a comfortable fit and clear, undistorted vision regardless of facial configuration or head size.
- Meets ANSI Z87,1-1989 standards for high impact and absorptive requirements.
- Fits comfortably over prescription glasses.



AX89 \$5.12

### Splash Proof Safety Glasses

Your best protection when working with chemicals or in other harsh environments.



AX91 \$10.99

### Amber Glasses

A necessity when using ultraviolet lights. Not only to protect your eyes, but beneficial in seeing hidden stains.



AX91C \$5.69

### EZ-ier Tape

Now you can create containment in half the time! EZ-ier tape is a double-faced tape with one side masking tape and the other side high tack cloth tape used to conveniently build containment barriers on finished and unfinished surfaces. Strong hold even against negative pressure but removes easily and completely!



AC8402 - 2" x 60' Roll \$19.49

### Full Face Respirator

Five strap suspension for a balanced, comfortable fit. Panoramic lens for unobstructed peripheral vision, eliminating blind spots and tunnel vision that can lead to trips and falls.



AX88A Medium \$150.94

AX88B Large \$150.94

AX92A (pair) Mold Cartridge with HEPA Filter \$33.42

(sold separately from masks)

### Deluxe Respirator

The Deluxe respirator fits and feels like a second skin. The AX88 is made with soft silicone rubber that fits the face and stays with it, throughout facial movements and speech. Protect your technicians from solvents and problem chemicals. Protect yourself from liability. (Cartridge set AX92 additional)



AX88 \$61.44

### Respirator Facepiece

The first respirator that is almost comfortable. Made of soft, pliable, hypo-allergenic rubber. To be used when working with solvents and other problem chemicals. (Cartridge set AX92 additional)



AX90 \$24.61

### Organic Vapor Respirator Cartridge Set

Fits regular and deluxe respirators. (Set of 2)

AX92 \$19.65



### Preservation Tape

Vinyl tape that won't leave a residue when used to adhere plastic to almost any surface. 60 yards x 2".



AC8399 \$13.17

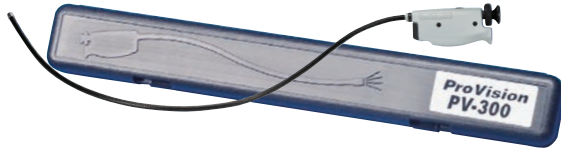
### Provision PV-300 Borescope

Features:

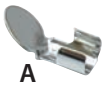
- Cable will reach deep into walls, drains, vents, engine blocks, etc.
- Powerful halogen lamp illuminates dark areas for clear viewing
- "Obedient" cable maintains its fixed position until readjusted
- Flexible, omni-directional cable bends in every direction to allow precise viewing

AX183 36" \$424.35

AX184 18" \$343.85



- |                        |       |         |
|------------------------|-------|---------|
| A. Borescope Mirror    | AX180 | \$22.94 |
| B. Magnetic Attachment | AX181 | \$22.94 |
| C. Halogen Bulb        | AX182 | \$14.89 |
| D. Borescope Kit       | AX185 | \$57.44 |



### BCAM™ SD Thermal Imaging InfraRed Camera by Flir

*Lightweight and Easy-to-Use*

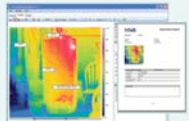


Compact size camera weighs only 19 ounces offering Professional performance, high accuracy, high resolution, and 1000 image SDcard storage. Thermal imaging InfraRed cameras can detect what no eye can see—the minor variations in temperature that can signal electrical or moisture problems. Infrared inspection with an Extech thermal imaging camera gives you the most powerful noninvasive monitoring and diagnosing tool. Detect hot spots, avoid electrical and mechanical failures, locate water damage sources, HVAC balancing problems. Your results can be captured and documented instantly into professional reports - providing tangible proof of your findings.

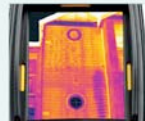
- High accuracy of 2% and thermal sensitivity better than 0.12°C helps you find problems faster and easier — critical when measuring threshold values of thermally sensitive equipment
- Lightweight and compact size results in less user fatigue
- Long Battery Life lasts for 7 hours of continuous operation on a single charge for uninterrupted inspections
- Large 3.5" (89mm) color LCD with razor-sharp resolution
- Rugged meter with easy grip handle construction meets IP54 dust/splashproof standards
- The built-in Laser LocatIR™ pointer quickly helps you associate the hotspot on the IRimage with the real physical target which greatly enhances the ability to target inconsistencies
- Standard 128MB SDcard stores up to 1000 Radiometric JPEG images. All 14,400 thermal pixels of each image can be analyzed using the included QuickReport™ PC Software
- Complete with 128MB SD Card, Li-Ion rechargeable battery with 100-240V AC adaptor/charger, QuickReport software with USB cable, lens cap, hand strap, and heavy duty case



The thermogram of the apartment building shows the path of a serious leak, completely hidden within the wall, from a washing machine on the third floor



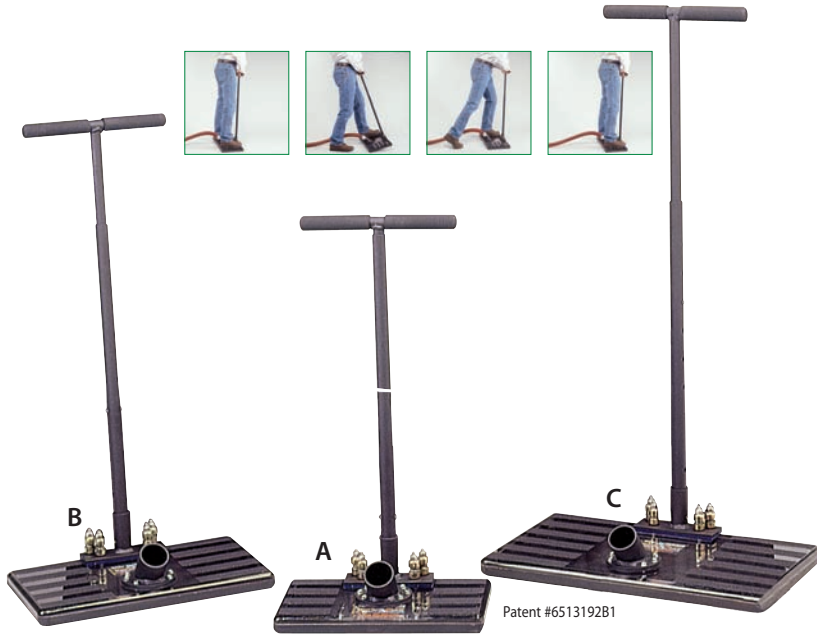
QuickReport PC software enables user to analyze Temperature of all 14,400 pixels of any InfraCAM SD JPEG image



Large razor-sharp colored LCD with ASP (Advanced Signal Processing)

AC116 \$5744.25





### Water Claw Flood Tools

Whether you pull the pad or you don't, the first step to making any flood job easier, faster, and more profitable is to start with sub-surface extraction using the Water Claw. Proven on thousands of flood restorations worldwide. Water Claw flood extractors are a "must have" tool for the full-service professional.

#### Unconditional Guarantee

Hydro-Force Mfg. now offers a 30-day guarantee on the purchase of your first Water Claw Sub-Surface Spot Lifter or Flood Extractor. If you don't agree that sub-surface extraction performed by the Water Claw will be an important part of your business, return it for a full unconditional refund.

#### A. Deluxe Small 8" x 14"

Extracts about 500 sq. ft. per hour  
AC015 \$504.85

#### B. Deluxe Medium 10" x 17"

Extracts about 800 sq. ft. per hour  
AC016 \$631.35

#### C. Deluxe Large Unit 12" x 21"

Extracts about 1200 sq. ft. per hour  
AC018 \$757.85

#### Water Claw Added Features:

- 1 Vacuum Release. Spring loaded handle automatically breaks vacuum between the carpet and tool for easier and faster flood extraction.
- 2 Telescoping handle easily adjusts for different operators.
- 3 Improved bottom plate for better sub-surface extraction.
- 4 Angled metal hose flange for greater durability accepts 1.5" or 2" hose cuffs.



### Water Claw Bag

AC015A Small	\$30.67
AC016A Medium	\$35.79
AC018A Large	\$40.89



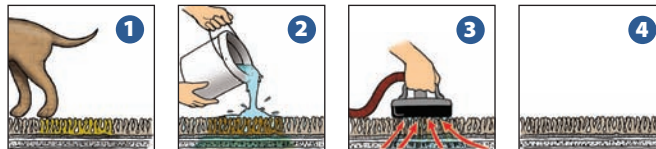
Patented #6513192B1

### Spot Lifter

*A spotting revolution has begun!*

If the problem is in the carpet backing or pad, the solution is a Water Claw Sub-Surface Spot Lifter. Flush out urine contamination, soda pop, oils, soap residues, food spills, etc. completely. Use with a truckmount, portable, or mini-extractor. Accepts 1.5" or 2" hose cuffs.

AC012 \$160.94



*Incredible results!  
Amazingly simple!*  
Try it once and you'll wonder how you ever got along without one!

Learn more at  
[www.waterclaw.com](http://www.waterclaw.com)

### Premium Vacuum Hose

Maximize your vacuum with our new Heavy Duty 2.5" vacuum hose.

The combination of co-polymer materials and two-part helically wound construction makes this 2.5" vacuum hose superior to others on the market. Our Heavy Duty 2.5" vacuum hose has everything you want in a vacuum hose; light weight, flexibility, ultraviolet protection, crush resistance and a smooth bore.

The smooth 2.5" inside diameter bore of our Heavy Duty vacuum hose has less internal resistance to slow the air as it flows through the hose. Less resistance increases the velocity of the airflow at

the cleaning tool resulting in better recovery and faster drying carpets.

Use our 2.5" Heavy Duty vacuum hose with Cool Cuffs and the 2.5" Cool Y (see page 31) and you will have carpets dry faster than ever. No longer is the vacuum power of your truckmount choked by your vacuum hose, cuffs and barbed connectors. 50 foot length sold without cuffs.



AH160 \$223.10

### Goodyear Garden Hose

#### Heavy Duty Water Hose

No more hassles with the cheap stuff from the hardware store. This quality hose is rated at 200 psi, flexible all year long, blue color for high visibility and 1/2" internal diameter to allow plenty of water flow. An excellent hose at an excellent price!



- AH62- 1/2" I.D., blue w/ hose ends 50' \$74.69
- AH62A- 1/2" I.D., blue w/ hose ends 75' \$102.58
- AH62B- 1/2" I.D., blue w/ hose ends 100' \$131.80
- AH60- 1/2" I.D., blue per foot 1-99' \$1.68

### Heavy Duty Vacuum Hose

#### For High Powered Truckmounts and Portables

This heavy duty hose has been our best selling standard for years. Used on truckmounts and portables.

- Flexible yet strong
- Smooth free flowing inside bore allows high CFM
- Effective with constant working solution up to 210 degrees F at the truck
- Available in 2" and 1.5"



#### 50 Foot Hose with Cuffs

- AH32 2" blue with cuffs \$99.30
- AH34 2" gray with cuffs \$99.30
- AH30 2" orange with cuffs \$99.30
- AH38C 1.5" blue with cuffs \$69.48
- AH36C 1.5" gray with cuffs \$69.48
- AH31 1.5" orange with cuffs \$69.48

#### 25 Foot Hose with Cuffs

- AH38B 1.5" blue with cuffs \$43.13
- AH36B 1.5" gray with cuffs \$43.13
- AH29 1.5" orange with cuffs \$43.64

### Heavy Duty 3/4" Pumpout Hose

#### Heavy Duty Pumpout Hose

- 200 psi Working Pressure
- 250° Heat Rating
- Rubber hose stays flexible under extreme conditions
- 50'

COMING SOON

### Pump-Out Hose

3/4" internal diameter green garden type hose 3/4" allows for free flow of high volume pump out systems on truck mounts.

- Patented 6-ply construction
- 500 psi Burst Strength
- Stays Flexible (even in cold)
- Kink-Resistant
- Heavy-Duty Full-Flo Brass Couplings
- Lightweight



AH65 (50') \$67.06

### Super TM™ High Heat Truckmount Hose w/ Cuffs

This is the hose designed to run with the super heat - super suckers in the middle of a hot summer day.

- Smooth free flowing inside bore allows high CFM
- Strong and durable, won't collapse using high heat and high vacuum situations
- Effective with constant working solution up to 240 degrees F. at the truck
- Available in 2"



- AH24- blue, 50' \$97.69
- AH25- orange, 50' \$97.69
- AH26- gray, 50' \$97.69



### Hydro-Coil™ Steel Braided

#### Your Hot Water Solution

3,000 psi, 250° F, 1/4" Steel Braid, Composite Rubber Exterior  
 Built for the most demanding pressure and heat situations. Rated at 3,000 psi and 250° F, this non-marking hose will withstand everyday abuse. Steel braid makes it tough and also very flexible. Meets manufacturer's specifications for all truckmount high-temperature machines. The 50' section includes protector sleeves on both ends and male pipe ends.

#### 50' Blue Hydro-Coil™, 1/4" ID

AH79A (Blue)	\$114.43
AH79B (Orange)	\$114.43
AH79C (Gray)	\$114.43
AH87 (Blue) Goodyear™, 3/8" ID	\$121.90
(Above includes male pipe ends and hose guard sleeves.)	

#### Hydro-Coil™, per foot

AH79AF (Blue)	\$2.82
AH79BF (Orange)	\$2.82
AH79CF (Gray)	\$2.82
AH82 Sleeves, hose guard 1/4"	\$3.39
XAF01 Male 1/4" pipe end	\$7.49
(Add the XAF01 when ordering Hydro-Coil™ hose AH79AF, AH79BF and AH79CF.)	

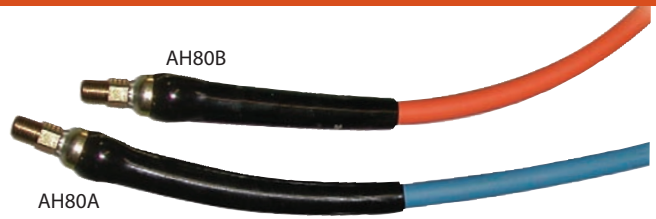
### Hydro-Flex™ Solution Hose

#### Low Pressure

The perfect choice for portable extractors. Also makes a strong, flexible water-supply line for truckmounts. Built to withstand working pressure to 250 psi. This light gray 3/8" hose has a non-marking PVC cover and comes standard with 1/4" male pipe ends on the AH90B and AH90C.

\*(Add # AH94 when ordering solution hose AH90.)

AH90B (3/8", LP, 25')	\$33.53
AH90C (3/8", LP, 50')	\$53.00
AH90* (3/8", LP, per ft.)	\$1.17
AH94- male LP, 1/4" pipe ends	\$4.03



### Hydro-Flex™ Poly Cover

#### Your Perfect Lead Hose

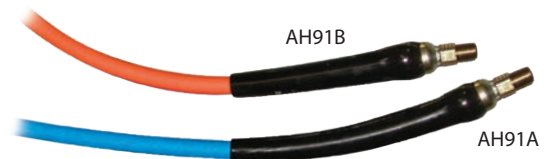
1,250 psi, 220° F, 1/4" Polyurethane Cover  
 Built with the professional carpet cleaner in mind. It will handle constant high temperature up to 220° F, and pressure to 1,250 psi. High-tech engineering and futuristic material give this hose extreme durability while maintaining flexibility. A non-marking polyurethane cover glides easily over floor and around corners. 50' sections include protector sleeves on both ends and 1/4" male pipe ends.

#### 50' Hydro-Flex™, 1/4" ID

AH80A (Blue)	\$110.40
AH80B (Orange)	\$110.40
(Above includes 1/4" male pipe ends and hose guard sleeves.)	

#### Hydro-Flex™, per foot

AH81 (Blue)	\$2.54
AH81B (Orange)	\$2.54
AH82 Sleeves, hose guard 1/4"	\$3.39
AH84 Male H.P. 1/4" pipe end	\$5.60
(Add when ordering Hydro-Flex™ hose AH81 and AH81B.)	



### Parflex Solution Hose by Parker

Specifically designed for carpet-cleaning water systems. Smooth, seamless thermoplastic inner tube specially compounded to be used with hot water. Less heat loss when compared to other hoses. Fiber-reinforced, non-blooming thermoplastic cover. Pressure up to 1750 psi, and can withstand temperatures of -40°F to 230°F. Great as lead hose.

AH91A (Blue)	\$124.97
AH91B (Orange)	\$124.97

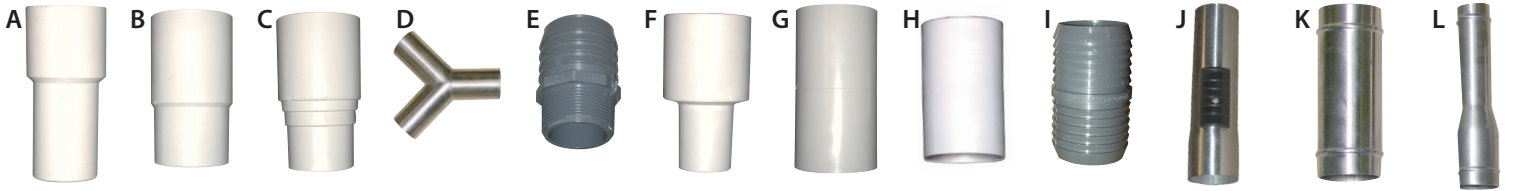
### Connector Sleeve

This soft yet durable connector system will cover all metal parts of the connectors and hose ends. The connector sleeve is a non-bulky protector that helps prevent burns, damage to interior walls and makes the connectors last longer.

A554 (set)	\$12.36
------------	---------







**A. Hose Cuff 1.5"**

Big end threaded.  
AH42 \$3.66

**D. Vacuum Y 2"**

Stainless steel.  
AX01 \$60.47

**G. Hose Cuff 2"-2"**

Both ends threaded.  
AH49 \$6.14

**J. Vacuum Relief 1.5"**

With vac collar.  
AW54 \$47.12

**B. Hose Cuff 1.5"-2"**

Small end threaded.  
AH46 \$4.70

**E. Threaded 1.5"-2"**

Barb.  
AH69 \$9.14

**H. Hose Cuff 1.5"-1.5"**

Both ends threaded.  
AH50 \$4.39

**K. Connector 1.5"**

Stainless steel.  
AH72 \$14.47

**C. Hose Cuff 2"**

Big end threaded.  
AH44 \$4.96

**F. Hose Cuff 2"-1.5"**

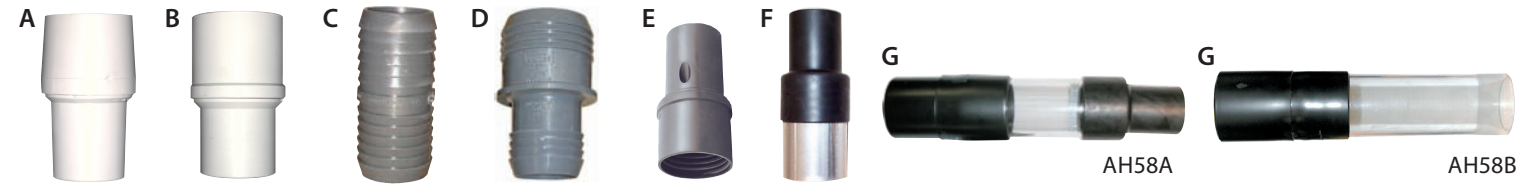
Big end threaded.  
AH48 \$6.54

**I. Connector 2"**

Hose.  
AH76 \$4.89

**L. Connector 1.5"-2"**

Stainless steel.  
AH70 \$24.31



**A. Swivel Cuff 1.5"**

Big end threaded.  
AH41 \$7.04

**E. Hide-A-Hose Swivel Cuffs**

Now you can hide your solution hose within the vacuum hose line and you can forget the hassles of trying to work with separate hoses lying all around!  
AH12 (1.5" swivel, fits 1/4" hose) \$9.67

**G. Sight Tube**

Attach the sight tube to the end of your cleaning tool to see the soil being removed or to see how much water is being removed on dry passes. Unique polycarbonate sight tube remains clear for long-term use compared to typical plastic and is amazingly durable. Great visual aid for customer to easily view soil removal during cleaning.  
AH58A (1.5" tube) \$22.94

**B. Swivel Cuff 2"**

Big end threaded.  
AH39 \$9.00

AH13 (1.5" swivel, fits 3/16" hose) \$9.38

AH14 (2" swivel, fits 1/4" hose) \$19.88

**C. Connector 1.5"**

Hose.  
AH74 \$4.49

**F. Vac Attack™**

Simple and inexpensive 1.5" to 2" adapter. Adapt 1.5" wand to 2" vac hose.  
AH59 \$10.06

AH58B (2" tube) \$25.13

**D. Connector 2" to 1.5"**

Hose.  
AH71 \$10.11

**Pump Out V115**

The Pumpout-V115 has the versatility that professional carpet cleaners and restorers are looking for. This portable pump out will go where you like to pre-filter and pump the waste water to the area of your choice. The 115 volt waste pump handles all you can throw at it with high volume output and long life durability. Set up for dual wand pumping and filtering the Pumpout-V115 will work for unlimited hours while the technician never has to make a trip out to the van to dump waste or empty filters.

**Features:**

- Dual stainless steel removable filters
- Works single or dual wand
- 115 Volt pump out works from household current - to prevent draining of the machine battery and charging system
- Durable aluminum box
- Pumps 10 gallons per minute
- Use as every day pre-filter and pump out for cleaning or pump out on floods
- Dual ports allow for dual wand use - or "Four to the Door" to increase vacuum



**Locking Vac Hose Connector "Cool Cuffs"**

- Easy to use – A simple 1/4 turn and it's connected. The latch locks it shut.
- Can't separate – Go up stairs, around corners, around the reel. It won't come apart.
- Durable – Rugged polypropylene (not vinyl), holds up to years of abuse.
- Looks Cool – It's only about half the length, it's ergonomic, and the ends are tapered.
- Inexpensive – Costs less than what it replaces: cuffs, barb & strap.
- Long lived – Easily outlasts the other connectors you've used.
- Compatible – Threads right onto your vac hoses just like your regular cuffs did.
- Versatile – The original locking cuff system. Seals, locks & swivels. Patented.
- Interchangeable – Reduces from 2" to 1 1/2" with swivel or lock. Your choice.

**1.5" Cool Cuffs**

AH123 1.5" Latched Female	\$11.44
AH124 1.5" Male	\$11.44
AH125 1.5" Latched Set	\$22.95



**2" Reducer Cool Cuffs**

AH45R 2" Latched Female	\$11.44
AH120 2" Male	\$11.44
AH121 2" Latched Set	\$22.95
AH45RI 2" Reducer Insert	\$3.45



**Cool Cuffs 2.5"**

AH140 2.5" Starter  
\$11.44



**2.5" Cool Cuffs**

AH142 2.5" Female Swivel	\$11.44
AH143 2.5" Male	\$22.94
AH144 2.5" Swivel Set	\$43.59



**2" Cool Cuffs**

AH109 2" Latched Female	\$11.44
AH120 2" Male	\$11.44
AH43 2" Latched Set	\$22.95



**2" Swivel Cool Cuffs**

AH122 2" Swivel Female	\$11.44
AH120 2" Male	\$11.44
AH45S 2" Swivel Set	\$22.95



**2.5" Reducer Cool Cuffs**

AH146 2.5" Barber Internal Reducer	\$11.44
AH148 2.5" External Reducer	\$11.44



**Other 2" Cool Cuffs**

AH45 2" Starter Cuff \$11.44

AH126 2" Male Swivel \$11.44



**Cool Y Cuffs**

AH150 2" Stainless Steel \$345.94

AH151 2.5" Stainless Steel \$68.94



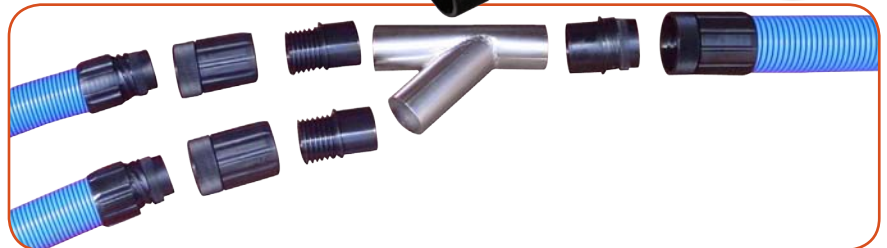
**Cool Y Assembly 2"**

AH152 2" with Cuffs \$91.94



**Cool Y Assembly 2.5"**

AH153 2.5" with Cuffs \$137.94



**Universal Faucet Adapter Kit**

Includes quick connect for garden hose. Accessory combinations guarantee a connection to almost any faucet ... an absolute must for truckmount owners!



AX21 \$45.94

**4-Way Faucet Key**

Any pro who does commercial work should have a 4-way faucet key in the van. It gives you instant access to the building's fresh water supply even when there's no handle on the faucet. When you need it, this little gadget is worth its weight in gold. Fits 6-9 mm stems.



AX51 \$11.44

**Faucet to Hose Adapter**

Simple small adapter that will fit 90% of existing indoor faucets so a garden hose will connect. This adapter is a must when you cannot locate outside water or when outside water has been turned off.



AX22 \$8.21

**The Hoser**

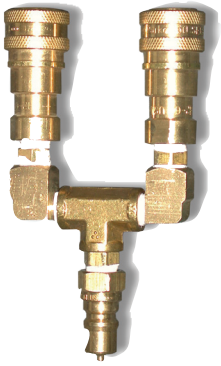
*Vacuum Hose Washing Tool*

Clean your vac hoses quickly and easily whenever needed. No more dragging dirty hose into your customer's house. If you do category 2 or 3 water damage jobs, this tool is a must! Just attach the Hoser to truckmount vacuum and solution lines and run your dirty hose through the Hoser as you reel it in. Works with 1.5" and 2" hoses.

AH100 \$160.86







### The Solution "T"

By Hydro-Force

Sometimes the simplest accessories are the most valuable. The solution "T" splits your solution line allowing a wand or RX-20 to be used at the same time as your Hydro-Force™. While one technician pre-sprays with the Hydro-Force™ the other extracts. This clever invention can save you up to an hour each day and TIME IS MONEY!

AX23 \$48.82



### Safe Connects

Get a grip on this indestructible connector cover that includes the female quick connect. With our best quality dual o-ring Parker connector, the Safe Connect protects both the female and male quicks. Great addition to the wand and machine ends of the hose.

- Prevents burned hands.
- Prevents chipping and scratching floors.
- Protects brass fittings.

AS56 (teal) \$18.34

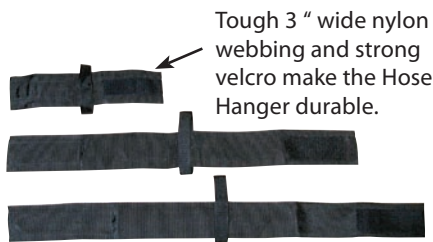
AS56A (blue) \$18.34

Available in teal or blue



### Hose Hanger

- Hang extra hoses up out of the way.
- Carry your first length into the job.
- Use with vacuum hose, solution hose, extension cords or just about anything you want to hang up.



Tough 3" wide nylon webbing and strong velcro make the Hose Hanger durable.

AX117 13" (holds up to 100' of solution hose) \$6.27

AX119 23" (holds 25' of 1½" vac hose) \$7.07

AX121 34" (holds 50' of 2" vac hose) \$8.57



### Hose Hook

Every professional will love the convenience of Hose Hooks. No more hoses in the way as you clean stairs. Simply hang them from the hand rail and they are out of the way. Do you ever run a hose up the outside of a building? Stabilize it safely with Hose Hooks. Up, down, along walkways, or wherever you run lengths of hose, use Hose Hooks to keep them in place.



AH95 \$11.49

### Keeper Velcro Strap

Strong and durable. Varied uses include strapping together your solution and vacuum hoses, holding together your Hydro-Force™ sprayer, etc.



NA0819 \$2.55

### Nylon Hose-Carrying Bag

Use for carrying hoses for portables or upholstery cleaning hoses and tools. Big 24" x 36" slip-lock closure. Strong nylon mesh.



AX14 \$14.81

### Vac Strap™

Do your vacuum hoses separate at the connectors when winding on the hose reel? Do they separate when you lay them out for the job? Do they often separate when going up stairs or up the side of a building? No more when you employ the VacStrap™ to hold your vacuum sections together! The VacStrap™ is fully adjustable to fit any size hose and adjust between the hose pieces to any length needed.

AC155 \$14.89

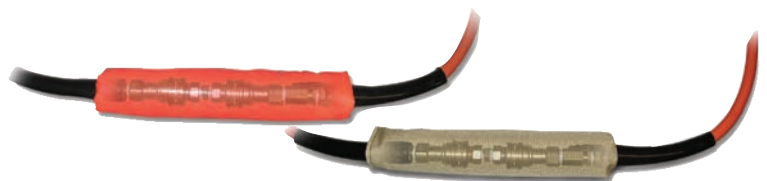


### QD Wraps

These wraps are just what you need to protect you and your client from the possible damage created when a steaming-hot quick connect meets with carpet. Just wrap up each quick connect and you're completely insulated from some pretty heated discussions.

A. AH10 Gold Cordura Nylon 10.81

B. AH10B Red Plasticized Fabric \$12.59





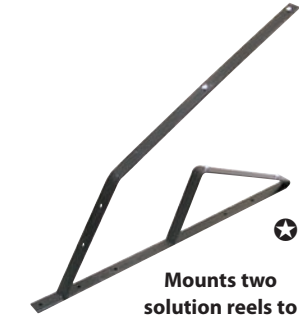
**Double Self-Supporting  
Hose Reel Stand**

AR30 \$85.58



**Self-Supporting  
Hose Reel Stand**

AR37 \$67.51



Mounts two  
solution reels to  
vacuum hose reel

**Stack Bracket for  
Solution Reels**

Bolts to the side of a vacuum hose reel (AR23, AR25, AR27) and secures two solution reels (AR11 or AR13) for a very compact fit. All hoses are at your finger tips.

AR31 \$98.68

AR09- Wall mount bracket for mounting solution reels on van doors (not pictured) \$34.17



**Vacuum Hose Reel**

These heavy-duty storage reels make hose handling a cinch. Finished with a rust-proof black paint, the strongly welded steel will give years of everyday use. Includes easy roll nylon bearings, and positive stop latch on the vac hose reel.

AR23- Reel, vac hose  
200' capacity \$405.92

AR25- Reel, vac hose  
250' capacity \$412.82

AR27- Reel, vac hose  
300' capacity \$418.58



Solution Hose Reel (with  
Optional Stand AR37)

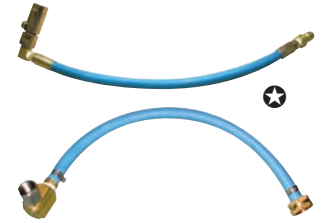
AR11- Reel, solution medium,  
holds 200' of 1/4" solution  
line \$117.30

AR13- Reel, solution large,  
holds 300' of 1/4" solution  
line \$121.90

**AR33- Swivel Assembly**

*High Pressure*  
Turns your solution reel "live" for direct hookup.

AR33 \$153.84



**AR35- Swivel Assembly**

*Low Pressure*  
Perfect for garden hose live reel.

AR35 \$94.63

**REPAIR KITS**

HP - PR50 \$33.06

LP - PR51 \$16.77

**Hydro-Filter**

**2 important reasons to own the Hydro-Filter**

1. Filters out fibers and debris before they enter your waste tank.
2. Shows your customer the dirty mess you are removing from their carpet.



AC11- Hydro-Filter (supplied with AC11A Filter sock) \$110.61

AC11A- Filter sock \$14.26

AC11B- Small parts kit \$14.50

AC11D- Replacement lid \$34.0.7

**Stainless Filter**

*For Hydro-Filter*

This stainless steel insert will not rust, has a large surface area for waste collection and free airflow, is durable and long-lasting. With the stainless filter available as an option, every professional cleaner should have a Hydro-Filter!



AC11S \$47.55

**Filter Bags**

*For truckmount and portable waste tanks.*

Protect your vacuum motors and blowers. Keep lint and large debris out of the waste tank. These bags come with plastic cord locks for a tight fit.



\*Dimensions may vary slightly

PHY049-030 (8"x17") \$22.22

PHY049-029 (12"x19") \$21.69

AX12 (8"x28") 10.17



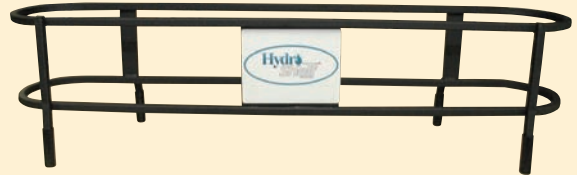
The Hydro-Well is economical and durable - it will not rust, dent, or corrode. Convenient 100 gallons of fresh water. Imagine how much time you will save - no looking for a water supply on the job and no worries about frozen water faucets or hoses in winter.

## Hydro-Well

Fresh Water Reservoir Tank

- 100-gallon capacity
- Durable polyethylene tank.
- Built-in chemical shelf holds up to 5 one-gallon containers.
- Molded baffles inside tank decrease water movement while van is in motion.
- Automatic water fill shut-off.
- Transparent tank allows monitoring of water level.
- Designed to be easily mounted anywhere in the van! Convenient, multiple-access ports ensure easy filling and draining of tank, no matter where it is mounted.

AX140 \$1079.85



## Hydro-Shelf

HydroShelf adds storage space to your Hydro-Well. It keeps up to six gallon-size jugs stored securely on top. Durable steel construction will last as long as your Hydro-well, maybe longer!

AX148B \$178.25



## Flojet VSD

12-volt fresh water supply pump

The new technology built into this pump senses the water flow and adjusts motor speed to give you an even flow and pressure without cycling. Delivers 1 to 3.2 gallons of water per minute at up to 35 PSI. Use with Hydro-Well or other types of fresh water tank.

AP38 \$276.00



## Fresh Water Booster System

Transfer water from a fresh water tank to any machine with this unit. The bladder collapses under the pump pressure and then feeds that pressure back to the machine. This keeps the pump from running as often, and eliminates constant cycling that is normally seen with a pump on its own. This is a plus with any machine that uses a manual or "toilet bowl style" float valve for incoming water. Compactly designed, integrated pump and 1.2 gallon accumulator tank system delivers up to 4.5 gallons of water per minute at up to 45 PSI.

AP36 \$447.35

### FEATURES:

- Self Priming
- Installs in convenient location; floor or wall. Can run dry without harm if water supply fails.
- Up to 4.5 GPM/30-45 psi

## Forever Clean Water Conditioning Magnet

The "Forever Clean" works like no other system ever invented for keeping truckmount systems clear, clean and free from mineral buildup.

- Not a filter – Forever Clean will eliminate scale and corrosion in your truckmount for 25 years or more, and no regular maintenance is required.
- Forever Clean will actually aid in the cleaning and rinsing process by realigning molecules and minerals. This greatly reduces surface tension and increases the ability of surfactants to solubilize and suspend soils.
- Forever Clean is easy to install. Simply install the unit on the incoming water supply line - then forget about it "Forever!"

AT20 \$573.28





**75% of the area in the United States has hard water problems. Experience the positive results that only soft water can bring.**

- **Improve Your Cleaning:** Your cleaning agents are designed to emulsify and suspend soils in the carpet. Hard water contains minerals which use up the cleaning agents before they get to the carpet. Soft water frees your chemical allowing maximum cleaning effectiveness.
- **Easy To Use:** Fits easily into the corner of a van and is fitted to hook directly to garden hose fittings. The manual model takes \$1.00 worth of salt and a few minutes to regenerate. The automatic systems take only seconds of your time.

- **Saves Chemical Cost:** With your chemicals now free to clean carpets, not water, you can use less chemical and get the same excellent results.
- **Saves Equipment:** Softening water before it enters your equipment will prevent mineral scale from building up in heater coils and solution lines and from clogging tips and strainers. Soft water will reduce wear on water pumps and give burners and heat exchangers more efficiency by keeping pipes clean.



**Stand Alone Water Softener  
10" x 38"**

To recharge, add salt directly to the tank and run water through at a trickle for 30 minutes. With this simple procedure you are ready to go for another month! (Back flushing is occasionally required.) Tank Material: Tough fiber epoxy case and ABS inner shell. Softening: 32,000 grains (enough for one month normal cleaning in a medium hard water area).

**AC39 \$562.35**

**Self-Contained Automatic  
Water Softener**

This great little unit comes self-contained and ready to mount in your van, complete with mounting bracket, automatic softener, and brine tank. The brine tank is small, but has all the professional features of a full-size unit - using only one square foot of floor space, this unit is a great space saver.

Easy to use! Once a week (may vary according to water hardness and usage. 8,000 grain capacity) simply hook up to water, twist the automatic timer, then go relax-everything is automatic! You will have soft water again in less than one hour.

**AC40B \$861.35**



**Large Water Softener  
Stand (optional)**

**AC39A \$103.44**



**Auto-Recharge  
Water Softener**

Made of a tough fiber epoxy case and ABS inner shell 10" x 38" -(Brine Tank, 11" square, 32" high). This automatic unit comes with a brine tank for the salt (left in the garage) and a hose and fittings to connect brine to the softener. The softener has an automatic head that activates with the simple turn of a dial. These are great for multi-truck companies who share a brine tank or the individual cleaner who wants to eliminate hassle. 32,000 grains.

**AC40 \$953.35**



### Propane Water Heaters

Replace your current inefficient system and boost your solution heat output. Thermostatically controlled and adjustable to over 200°. Versatile and easy to install, and can adapt to any truckmount. It includes ignitor, gas regulator, and pressure relief valve.

AX42 65,000 BTU. \$1396.17  
 AX43 120,000 BTU. \$1780.20

\*We cannot guarantee shipping time on this product.

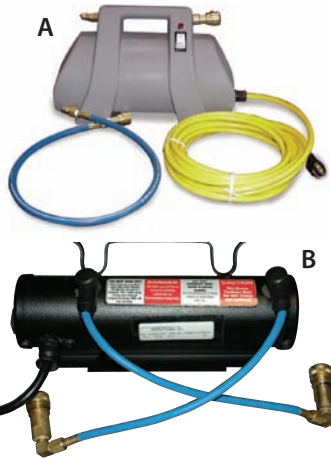
### A. Hot Shot™ Heater

The Hydro-Force Hot Shot™ Heater will make your carpet and upholstery cleaning more effective than ever. Turn your portable into a sizzling heater machine with the Hot Shot™

FEATURES:

- Heavy Duty Polyethylene Casing
- 1750 watts (15 amp)
- 3' connector hose w/ male & female QC's
- Male 1/4" quick connect output
- Female 1/4" quick connect input

AX30 \$389.85



### B. HF2000 Heater for Truckmounts and Portables

The HF2000 is automatically controlled up to 220°. This unit is a must for portable cleaning when that extra solution heat is needed for tough soils. The heater, supplied with short whip hoses and brass quick connects on inlet and outlet ports, ready to attach to your solution line.

Features: 1750 Watts / 14.5-Amps/ 120 vac; Automatically Controlled to 220°; Safety Backup Thermostat; Stainless Steel Heat Chamber; rated up to 1,000 psi; Whip Hoses, Quick Connects; Cord Wrap; Carrying Handle and Lighted Switch

AX39 602.60

### Bucket Heater

Never be caught without hot water. This 1,000 watt immersion heater will heat one gallon of water from 60° to 130° in ten minutes. Automatic safety shut-off switch reduces fire hazard.

AX28 \$68.60



### Holder (wall)

Shown with AS08, not included.

AC191 \$59.04



### Holder (floor)

Shown with AS30, not included.

AC192 \$59.04

### Plastic Pad Holder

Minimize waste from lost or damaged squares with this convenient holder. Stores approximately 800 plastic or 300 foil 3" protectors\*. Made of light-weight strong aluminum. Mounts easily to walls, doors, shelving or even the dash board.

AC19B \$27.38

AC19C \$33.19

\*(Use AC19C for 4" pads)



### Single Holder

(shown with TCBS, not included)

AC197 \$64.58

### Double Holder

(Holds two sprayers, not included)

AC196 \$75.16

### 5-Gal Headpack Holder

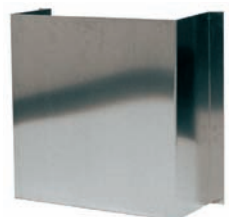
(Shown with AX101, not included)

AC198 \$42.32

### Styro-Block Holder

Keep blocks off of the van floor and protected from damage in this convenient storage bin. Holds four full sheets of blocks and mounts on almost any door panel or van wall. Made from light-weight aluminum.

AC44B \$50.83



### Van Shelf™

Holds 8 one-gallon containers on each shelf  
 Get your chemicals up off the floor. This space-saving shelf mounts directly over the van wheel well, utilizing seldom-used space. This three-shelf unit will hold 24 single-gallon containers or any variety of containers or accessories. Your Hydro-Force, upholstery brush, spotting towels or stair tool will all fit.

- NOTE: Assembly required.
- 4" lips - bottles won't spill
  - Adjustable
  - 48" shelves

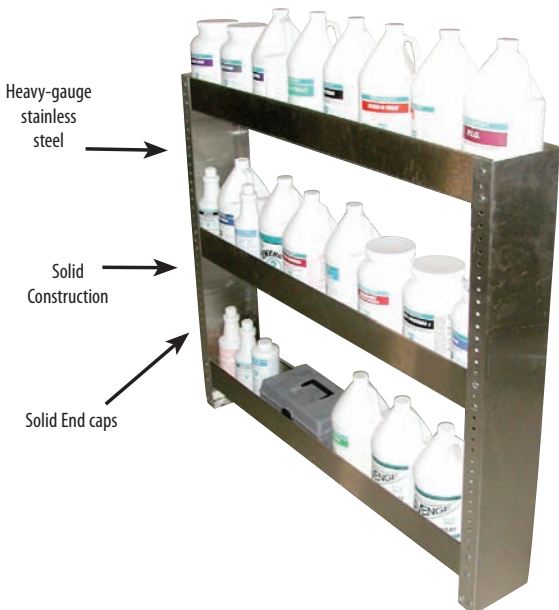
AX104 (aluminum) \$343.85

AX128 (stainless) \$401.35

### Aluminum Shelf



### Stainless Steel Shelf



**THERMAL BARRIER CURTAIN FOR YOUR VAN**

### Van Curtain

Don't freeze in winter or sweat in summer. Insulate your cab from heat, cold and unwanted odors. Heavy-duty 6 oz. grade nylon curtain prevents unwanted circulation of heating and air conditioning by keeping it in the front compartment. Curtain snaps to van's contoured ribs. Folds aside with center zipper for easy access to back. Clear vinyl windows for full visibility. Handy utility pocket holds maps, clipboards and other equipment. Available for all full-size and mini-vans. Choose from gray or navy blue. Specify color, sliding or hinged side door, make, and model of van.

*"Keeps the noise and heat in the back where it belongs.....One of the best \$200.00 I ever spent!" -- Glen Thompson, Distinctive Carpet Care*

AX04 \$263.65

**ADVANTAGES:**

- Creates a comfortable driving environment
- Keeps heat in while heating van on long winter nights
- Keeps noise and odors in the back
- Maintains access and visibility to the rear
- Easily installed and transferred to new vans

**CONSTRUCTION:**

- Heavy-duty nylon fabric
- Clear vinyl windows (D.O.T. approved)
- Full-length separating zipper
- Two handy utility pockets
- Storage bag



### Air Mover Shelves

Keep your dryers and air movers safe and secure in this sturdy aluminum shelf for mounting in trailers or cube vans. Six air mover shelf AT74. Also available in a four air mover shelf, AT72. Dimensions AT72: 48" tall x 20" deep x 37.5" long. Dimensions AT74: 48" tall x 20" deep x 55.5" long.

AT72 (4) \$458.85

AT74 (6) \$504.09

**Plenty of room for 3 more air movers or other supplies.**





### A. Viper Venom The Industry's Best Selling Tile & Grout Cleaner!

Viper Venom is a high alkaline cleaner that is loaded with surfactants, solvents and builders that allow it to blast through years of built up grease, oil, filth and stains easily. The first choice of tile and grout professionals, you can count on Viper Venom when "clean" is the only option!

Viper Venom is also very economical because you dilute it according to the situation. Mix at 32 to 1 for light cleaning all the way to 1 to 1 for extreme situations that require extra bite.

*Dilution = 1:1-1:32 rtu pH = 12*

CR22GL (gallon) \$23.26

CR22PL (5 gal.) \$98.56

### B. Viper Renew The Last Resort on Stone, Tile and Grout!

Viper Renew contains organic acids that remove soils and stains on stone, grout and tile that have been neglected for years. Also perfect when surfaces are clean but stubborn stains remain behind. Viper Renew removes a very thin layer of grout or stone, taking with it all the hard water deposits, soap scum, efflorescence and staining. Viper Renew is the product of choice when all other cleaners have failed!

Viper Renew uses a special organic salt that is twice as effective as phosphoric acid at dissolving mineral deposits and without the unpleasant fumes. With a supply of Viper Renew on your truck you'll be prepared for even the most extreme stone, tile and grout cleaning situations. (Avoid getting on metals!)

*Dilution = 1:1 rtu pH = 1*

CH49GL (gal) \$43.00



### A. Spinerger 2

Use Spinerger 2 for man-made ceramic, porcelain, and quarry tile. It takes care of the mineral scale, soap scum, and imbedded stains often found on restroom and shower tile. This special formula also cuts grease incredibly well and does it without any added solvents.

*Dilution = 1:4 rtu pH = 2*

CH42GL (gallon) \$22.07

### B. Spinerger 11

Great heavy-duty all-purpose cleaner. Spinerger 11 melts away years of built-up grease, stains, and soil, and does it without the use of solvents or caustic builders. Spray it on ceramic porcelain and quarry tile at a 1:4 ratio for heavy-duty cleaning. Dilute it further for routine maintenance cleaning.

*Dilution = 1:4 rtu pH = 11*

CH43GL (gallon) \$22.07


### C. Spinerger 7

Great all-purpose cleaner. Use Spinerger 7 to rinse with after cleaning with Spinerger 2 or Spinerger 11. It's also excellent as a stand-alone cleaner when used in regular maintenance through scrubbing equipment, extractors, or mop and bucket. It cuts and suspends dirt and grease, and leaves floors sparkling clean.

*Dilution = 1 - 20 oz./gal. rtu pH = 7*

CH45GL (gallon) \$28.49

CH45PL (5 gal.) \$98.01



**HYDRO-FORCE**  
**SX-12**  
HARD SURFACE TOOL

See page 7

The best tool for blasting soil and dirt from tile, grout, and smooth or rough hard surfaces.



## Premium Grout & Stone Sealer

Premium Grout and Stone Sealer  
Your customers want their stone, tile and grout floors and counters sealed and this is a professional product that really delivers. Premium Grout and Stone Sealer penetrates deep into all grout and absorbent and semi-absorbent stone and tile to protect against water and oil based spills as well as dry soils to keep surfaces looking great for far longer.

The key is a combination of proprietary fluorochemicals and polymers that are far superior to "Home Center" sealers. This is a highly durable sealer that can be reapplied without any special prep other than cleaning.

*Dilution = RTU*  
CH06QT (quart) \$28.49

CH06GL (gallon) \$98.01



## Foam-Less

Foam from detergent build-up makes your machine work harder. It can ruin your equipment and cut its cleaning effectiveness. Prevent foam problems by adding Foam-Less through your vac hose or directly into your waste tank. Highly concentrated. Don't let a little foam slow you down!

*Dilution = 1:2oz. / waste tank*  
CH47GL (gallon) \$24.82



## Solvent-Based Grout Sealer

This low-odor, solvent-based sealer uses fluorochemical technology for oil, water and soil resistance. It dries in six hours, cures in 48 and won't change the texture or color of the grout. Apply it quickly and easily using the Grout Stick or Hydro Stick.

*Dilution = RTU*  
CH04QT (QT3) \$25.42

## DuPont™ Teflon® Advanced carpet and upholstery protector

For superior repellency and soil resistance plus...

- Excellent protection against oil-based spills and soils
- Effective on water-safe upholstery fabrics
- Easy to apply
- Freeze/thaw stable

Now, a new opportunity to increase profitability!

Order a free DuPont™ Teflon® Advanced Sales Training CD today to learn about the advantages of Teflon® Advanced, why it works and how to sell it.

Call 1-800-666-9206, reference CDI-3.



### Teflon Advanced

*Dilut. = 1:4*  
CP16GL (gallon) \$52.83  
case of four

### Teflon Advanced for Wool

*Dilut. = 1:4 - 1:8*  
CP17GL (gallon) \$103.39  
case of four



The DuPont Oval logo, DuPont™, The miracles of science™, and Teflon® are trademarks or registered trademarks of E. I. duPont de Nemours and Company, Inc. © 2005 E. I. duPont de Nemours and Company, Inc.

**DU PONT** The miracles of science™

## ALSO AVAILABLE:

- LB77 Shirtpatch (pictured)
- LB78 Van Decal (pictured)
- LB99 Consumer brochure (pictured)
- LD42 Demo Blotter Card (pictured)



Patch



Decal



LD42



LB99

All advertising and sales material, no charge when you order three cases or more of Teflon® Advanced carpet protector.





## A. Red Relief — Revolutionary Red Dye Remover

Red Relief is a two-part system that, when mixed together, creates a stable formula for direct application to red stains and others that were once thought impossible to remove. Read instructions thoroughly before use.

Revolutionary results—Gets all the red out every time. Compare Red Relief to all the other heat-release products. You will be amazed with the results!

Unparalleled safety—This product is safe on carpets and fabrics where other products would discolor or bleach the item. Use lower temperature and still have a much better result.

Economical—Red Relief is a two-part product that activates on mixing. You will find yourself using less product than with the competitors' brands.

*Dilut. = rtu    rtu pH = 6-7*

**CS14A (quart)    \$21.29**

**CS14B (½ gallon) \$34.55**

*\*Special shipping requirements apply.*

## B. Red Relief for Wool

Red Relief for Wool constitutes a safer approach to attempt dye stain removal from wool at the customer's risk and consent.

*(Set: Three 1-pint bottles)*

*Dilut. = rtu    rtu pH = 6.5*

**CS14W (1 quart)    \$29.33**

*\*Special shipping requirements apply.*

## No More Mixing!

*Dual Chamber Sprayers Red Relief and Stain Magic*

These sprayers are metered to automatically mix equal parts of solution A with solution B. Fill each bottle with the designated product and they are ready to use.

**E. Red Relief (sprayer only) AS93    \$21.78**

**F. Stain Magic (sprayer only) AS94    \$21.78**

## C. Stain Magic — Furniture-Stain Remover & More

Stain Magic is a two-part system that, when mixed together, creates a stable formula that should be used within 15-minutes for best results. Suitability of Stain Magic on any given stain or fiber is to be determined by the professional before spotting.

Removes—Stains that were thought to be impossible to remove simply vanish. Effective on furniture stains from wood, wine, mustard, coffee, tea, urine, vomit, feces, potted plants, etc.

Works alone—For most stains, heat is not necessary to accelerate action. Mustard may be the exception here.

Economical—Stain Magic is a two-part product that activates on mixing. A small amount of product will remove stains that would never come out with typical spotting techniques.

*Dilut. = rtu    rtu pH = 8*

**CS15A (1 quart)    \$21.29**

*\*Special shipping requirements apply.*


## D. Stain Magic for Wool

Constitutes a safer approach to attempt organic stain removal from wool at the customer's risk and consent. (Set: Three 1-pint bottles)

*Dilut. = rtu    rtu pH = 9*

**CS15W (1 set)    \$29.33**

*\*Special shipping requirements apply.*



**pH Indicator Test Tape**

This special tape will change color and indicate pH of any water-based solution. Use for pH indication of spots on carpet by wetting and quickly pressing tape onto the spot.

**AX20    \$14.56**



# Chemicals - Anti-Allergen and Encapsulation Cleaner <<<<

The Anti-Allergen line allows you to offer an alternative cleaning system to your customers who are sensitive to chemicals and allergens.



## Anti-Allergen PreSpray

Because allergy sufferers may be sensitive to solvents, perfumes, or other hazardous materials, use Anti-Allergen Hypo-Allergenic PreSpray on carpets, upholstery, and mattresses.

*Dilut. = 12 oz/gal    rtu pH = 10*  
CG52GL (gallon)    \$33.42

## Anti-Allergen Deodorizer

Anti-Allergen Deodorizer does not contain perfumes, solvents or pesticides. Uses an oxidizing agent to counteract pet urine and other malodors.

*Dilut. = 12 oz/gal    rtu pH = 9*  
CG50GL (gallon)    \$41.26



## Anti-Allergen All Fiber Rinse

Do your final rinse with this excellent hypo-allergenic formula. Removes all the soil and allergens suspended by your pre-spray.

*Dilut. = 2 oz/5 gal    rtu pH = 9.2*  
CG56GL (gallon)    \$22.70

## Anti-Allergen Filter Enhancer

Anti-Allergen Filter Enhancer is a consumer treatment for new air filters that traps allergens but does not affect the air flow through the system. It's great as an add-on sale or as a freebie.

*Dilut. = rtu    rtu pH = 10*  
CG54QT (quart)    \$10.75



## Anti-Allergen Relief Treatment

Anti-Allergen Relief Treatment deactivates the allergen in dust mite feces that triggers the body's allergic response. After cleaning, apply it to carpet, upholstery, bedding, mattresses, or anywhere else your client wants it.

*Dilut. = RTU    RTU pH = 6.5*  
CG58GL (gallon)    \$59.73

## Anti-Allergen Brochures

Use these two informative brochures to educate customers on dust mites and the use of hypo-allergenic cleaning products.

*After-Care Instruction Sheet*  
LB121    \$27.60

*Asthma and Allergy Relief Brochures*  
Two formats to choose from.  
LB122 (10+) EA. \$.29

LB123 (100+) EA. \$.69

LB121



LB123



LB122

## Brush n' Vac - Encapsulation Carpet Cleaner

• Fast Drying • Deep Cleaning • Low VOC • Highly-Concentrated • Soil Retarding • Neutral pH

Brush n' Vac absorbs and cleans the worst soil. The soil is absorbed into a bonnet or suspended for later vacuuming when used with brush method. Remaining residue retards resoiling. This makes vacuuming more effective and is the foundation for an excellent maintenance system for commercial carpet. Hot water extraction is recommended on a semi-annual or annual basis.

*For best results, use Brush n' Vac with the Brush Pro Machines™.*

CC33GL (gallon)    \$30.80





**A. Microban Disinfectant**

*Anti-Microbial, Disinfectant, Bactericide*

Protects against germs and odors on almost any surface. Kills germs, bacteria, fungi, mold, and mildew that cause allergies and disease. EPA approved for decontamination applications such as sewage back-ups, carcass removal, and many others. Use it on textiles, bedding, mattresses, in air ducts, etc.

*Dilut. = rtu rtu pH = 7*  
CD62GL (gallon) \$29.84

**B. Microban X-580**

*Insecticide, Bactericide, Fungicide*

One application kills insects, mold, mildew, bacteria and their odors. It also provides long-lasting residual protection. Apply via spray or fog. Kills roaches, fleas, ants, beetles, bedbugs and their larvae. Protects stored fabrics against textile-destroying insects for six months! Recognized by major insurance companies.

*Dilut. = rtu rtu pH = 7*  
CD61GL (gallon) \$42.49

**C. Microban QGC**

*E.P.A. Approved Disinfectant*

Microban QGC is an epa approved disinfectant, fungicide, virucide, sanitizer, mildewstat, deodorizer and heavy duty cleaner. Legal in California. Microban QGC is a one step disinfectant cleaner effective against a broad spectrum of bacteria, is virucidal (including hiv-1, the aids virus) fungicidal, and inhibits the growth of mold and mildew.

*Dilut. = 2 oz./gal. rtu pH = 7.7*  
CD65GL (gallon) \$34.39

**Milgo SR — Carpet Deodorizer**

Milgo SR eliminates tough odors like sewage, urine, feces, perspiration, decay—and it's safe for stain-resistant carpets. It's your best choice for deodorizing stain-resistant carpets.

*Dilut. = 1-32 oz./gal. rtu pH = 7.7*  
CD89GL (gallon) \$33.35



**Milgo QGC — Anti-Microbial Sanitizer**

Safe and effective! Professional strength to handle tough odors like urine, sewage, and perspiration. Legal in California

*Dilut. = 2-8 oz./gal. rtu pH = 7.7*  
CD86GL (gallon) \$41.61



**EPA/FDA/OSHA Compliant**

Used in hospitals and pharmaceutical cleanrooms since 1978. Complete kill of vegetative disease-causing organisms for contamination and odor control.

<sup>1</sup>Department of Cell Biology and Molecular Genetics. University of Maryland

<sup>2</sup>EPA 8383-7

<sup>3</sup>FDA Registration (K926013)

<sup>4</sup>OSHA Bloodborne Pathogens Standard

**Features and Benefits**

- Kills Mold and Mildew
- "Continuous Residual Antimicrobial Protection for up to Six Months"<sup>2,3</sup>
- "More Effective than Bleach"<sup>1</sup>
- "Very Low Toxicity" (User Friendly)<sup>2,3,4</sup>
- Complete Disinfection of Disease and Odor-Causing Organisms
- Kills MRSA, VRE, AIDS and Avian Flu

**A. Disinfectant Towelettes**

CD39T (180 each) \$13.42

**B. Disinfectant Solution**

CD39GL (Gallon) \$37.70

**C. Disinfectant Solution**

CD39S (22 oz.) \$13.16

**D. Enzyme Mold Cleaner**

CD39M (Quart) \$37.38



## Benefect® Broad Spectrum Botanical Disinfectant

A Safe, Non-Toxic and EPA Registered Restoration Disinfectant!

Now there's a restoration grade, broad spectrum disinfectant for all categories of water damage and even mold remediation and trauma scene clean-up that has earned the highest safety rating from the EPA (a category IV safety profile for ALL 6 routes of exposure)! You can use Benefect with total confidence around your customers, your technicians, children, pets, the elderly and even people with chemical sensitivities!

It's so safe that there are no label warnings or precautionary statements for use or disposal— your technicians don't even need to wear Personal Protective Equipment!

Benefect is the first and only botanical hospital disinfectant and fungicide registered with the EPA for control against gram-negative and gram-positive bacteria, fungi, viruses (including HIV-1, the AIDS virus) and tuberculosis. This makes it suitable for all types of water losses including gray or black water damage, mold remediation, trauma scene clean-up, carpet deodorizing and anywhere else germ or odor control is required. Benefect is also very effective where organic matter is present.

Use Benefect to disinfect any hard, non-porous surface material. It also controls and inhibits odor causing water-borne bacteria, mold and other odor causing organisms on a variety of porous and semi-porous materials including: carpeting, carpet pad, subfloors, concrete, wood studding, trim, lumber, tack strip and paneling. Just wet the surface with the spray and leave for 10 minutes. No rinsing is required. Just spray and walk away!

For gray and black water damage, pre-clean affected surfaces and apply as described above. For mold remediation, best used as a wipe to remove surface molds and as a spray after remediation is complete to control any remaining molds. (Use as part of proper mold remediation protocols.)

## Benefect Broad Spectrum Disinfectant

RTU pH: 5-6  
Dilution Ratio: RTU (Covers 1,000-1,200 Sq. Ft./Gallon)

CD02GL (gallon) \$45.99



- The First & Only Botanical EPA Registered Disinfectant
- Kills Over 99.99% of Bacteria & Mold
- Hospital Disinfectant, Fungicide, Virucide & Tuberculocide
- Unprecedented Safety Profile
- Safe and Non-Toxic for Adults, Children, Pets, Technicians!
- Effective for All Categories of Water Loss
- Excellent for Mold Remediation and Trauma Scenes
- No Rinsing, No Wiping!
- No VOCs
- No PPE Required
- Reduce Your Liability
- Environmentally Responsible and Sustainable

## Benefect Atomic Degreaser

Atomic Degreaser is a next generation heavy duty cleaner and degreaser that utilizes an optimized dynamic chemistry to deliver superior penetration of soils, rapid wetting and dispersion of particulates with little or no agitation—making it ideal for the heaviest grease, smoke damaged contents and surfaces.

Made from botanical ingredients, it is safe to use around children, pets and the chemically sensitive. Atomic contains no solvents, VOCs, petrochemicals, dyes, fragrances, phosphates, alkyl/nonyl phenols or other hazardous ingredients and will not contribute to indoor air pollution.

RTU pH: 10.9-11  
Dilution Ratio:  
Contents and Light Soot:  
2-4 oz./Gal.

Heavy & Slimy Soot or Grease:  
16 oz./Gallon. (Increase depending upon severity)

CD09GL (gallon) \$45.99





# Carpet and Upholstery Tools

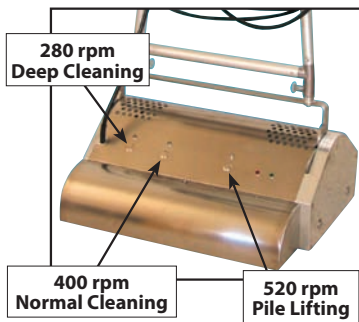
## Brush Pro™

Brush Pro is perfect for encapsulation cleaning because its counter-rotating brushes work your encapsulation chemical into the carpet from multiple directions. It also serves as a pile lifter prior to cleaning by lifting carpet fibers and collecting loose dirt in the receptacles. Brush Pro is also very effective during extraction cleaning for agitating the prespray into the carpet before the extraction step for more thorough chemical action. It's an effective, easy-to-use tool that every cleaner should have in his van.

Specifications:	Brush Pro 17	Brush Pro 20
Machine Width:	17"	20"
Brush Width:	15"	18"
Weight:	42.3 lbs.	54 lbs.
Three Speed:	No	Yes
R.P.M.:	400	280, 400, 520
Optnl. Wool Brush:	Yes	No
Optnl. Commercial Brush:	Yes	Yes
Dirt Receptacles:	Optional	Standard
Storage Tray:	Yes, with wheels	Yes, with wheels
Noise Level:	Low	Low
Cord Length:	50 ft.	50 ft.

MH51 17" \$3320.97  
 Optional Brushes  
 MH51W (17" Wool) \$208.09

### Brush Pro 20 Back View Three Speed



MH52 20" COMING SOON  
 MH51C (17" Commercial) \$208.09  
 MH52C (20" Commercial) COMING SOON

## Brush n' Vac

Encapsulation Carpet Cleaner  
 • Fast Drying • Deep Cleaning • Low VOC • Highly-Concentrated • Soil Retarding • Neutral pH



Brush n' Vac absorbs and cleans the worst soil. The soil is absorbed into a bonnet or suspended for later vacuuming when used with brush method. Remaining residue retards resoiling. This makes vacuuming more effective and is the foundation for an excellent maintenance system for commercial carpet. Hot water extraction is recommended on a semi-annual or annual basis. **For best results, use Brush n' Vac with the Brush Pro Machines™.**

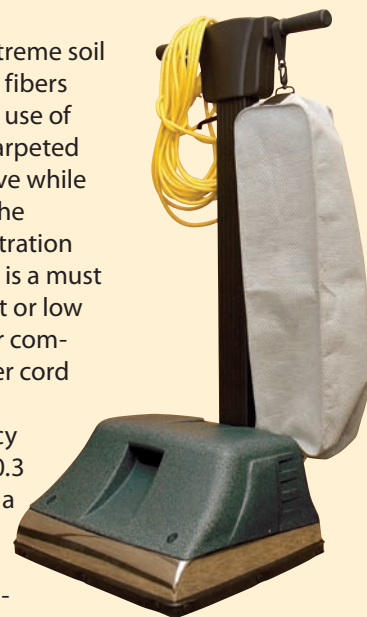
CC33GL (gallon) \$3.80  
 case of 4 \$23.18 x 4

## The Hydro-Force Pile Lifter

The New Hydro-Force Pile Lifter provides extreme soil removal of dry particles imbedded in carpet fibers and extreme pile lifting capabilities. Regular use of an New Hydro-Force Pile Lifter helps keep carpeted areas cleaner and visible areas more attractive while promoting a healthier environment due to the New Hydro-Force Pile Lifter's high micron filtration capabilities. The New Hydro-Force Pile Lifter is a must for every carpet care program or prior to wet or low moisture cleaning of carpets in residential or commercial environments. 50' Detachable power cord

- Heavy duty, mildew resistant, high efficiency (0.3 Micron) filtration outer bag and 99% (0.3 Micron) filtration disposable inner bag for a cleaner and safer environment
- Highest velocity vacuum fan (10,300 rpm) of any pile lifter removes more fine particulates

MA29 \$2793.35



## Certified® Model "S" Pile Brush

The one essential tool for proper carpet care, the Certified® Model "S" Pile Brush removes the deeply embedded dry particulate matter from the carpet while helping groom the nap, eliminate traffic patterns and prolong the life of your carpet and rugs. The Model "S" Pile Brush has a dual motor system: one motor drives a 4" nylon brush, while a second drives the vacuum motor. The Model "S" also has a sand trap, which collects the larger particles so that only fine, dry particles can pass into the shake-out bag. The Model "S" has a self-leveling base and is a solidly constructed, durable machine.

MA27 \$2228.13



## Selling More Commercial Carpet Cleaning with Brush n' Vac

The cleaning professional should be examining encapsulation cleaning with the idea of how it can break down traditional barriers in the commercial carpet cleaning market and expand his/her company into new horizons. Everyone agrees that encapsulation cleaning with Brush n' Vac is a high speed, fast drying, appearance enhancement carpet cleaning method, particularly on the billions of square feet of often neglected or poorly cleaned commercial glue down carpet. Low moisture encapsulation carpet cleaning is another tool in the carpet cleaner's toolbox that provides him/her with the opportunity to clean commercial carpets where they look great and dry fast, and do it at cleaning rates and speeds that rivals any carpet cleaning method or system on the market. Traditionally, a truck mount equipped, trained, certified professional cleaner who was bidding directly against a high speed bonnet cleaning system had absolutely no chance when the final decision on the bid came down to price. He/she could do all the educating they wanted about interim and restorative maintenance, but in many cases, the door was still slammed in their face. High speed, fast drying encapsulation carpet cleaning with Hydroforce Brush n' Vac can change all of that. Combine Brush n' Vac with a Brush Pro or VersaPro machine and you can clean faster, do a better job, and you can provide a bid that will bring your company lots of NEW commercial carpet cleaning business.



## Rotary driMASTER™ Extractor

HydraMaster's model Rotary DriMaster Extractor incorporates their patented DriMaster Jetless Cleaning Technology. The advantages of the DriMaster technology include extreme fast drying after cleaning. The RDM leaves carpet dramatically drier than typical wand cleaning.

Additional advantages of the RDM include less loss of heat than with traditional spray jets. The easy-to-use Rotary DriMaster weighs only 50 pounds and has an ultra-low profile to easily clean

under and around furniture. The tool has been designed for optimal use in residential cleaning and olefin cleaning, where controlled moisture is required.

The Rotary DriMaster Extractor works effectively with all types of extraction machines, portables, or truckmounts, making it as versatile as it is easy and effective to use.

MH22 \$4019.25



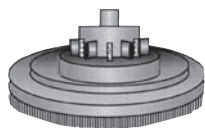
## High Speed RX-20

The high-speed RX-20 cleans faster and better than ever. High-speed gearbox design rotates the cleaning star at an astonishing rate of six-hundred cleaning passes per minute! Redistributed balance puts less weight on the operator. Larger transport wheels and a convenient lift handle add up to a machine that operates easier, producing less fatigue. You'll like the way it handles and you'll love the way it cleans.

MH20A \$3904.24

## Optional Drive Block

For bonneting with RX-20! Not for use on any natural hard surfaces. Man made products.



MH20D \$200.68

## Hard Floor Brushes

- MH20E Light Duty \$683.10
- MH20F Medium Duty \$683.10
- MH20G Heavy Duty \$683.10



## NEW Evolution Truck Mount Wand!

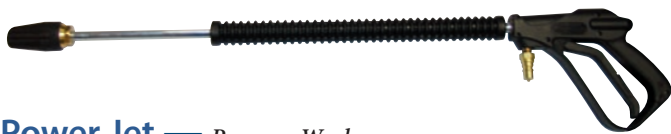
The Evolution represents a technological breakthrough in wand performance! That's because the roto-molded head has been designed to create laminar airflow through the wand. This "smoothes" and dramatically increases airflow, which is why the Evolution wand removes twice as much water from the carpet compared to traditional wands! And, as everyone knows, less water means faster drying times!

- 2" Aluminum Tube
- Lightweight at 8.8 lbs.
- 16" Wide Roto-Molded Head
- Delrin Acetal Glide
- 6 Jets
- Rated to 1000 PSI

AW97 1.5" \$634.80  
AW98 2" \$1029.25



# Carpet and Upholstery Tools



## Power Jet — Pressure Wash

Automatically increases the impact of your pressure by 50%. Pressure wash at 1,000 psi with the same impact and effect as if your pressure were running at 1,500 psi. The amazing effect of this assembly comes from the PowerJet's oscillating nozzle. It delivers a round spray 15 degree pattern that's 50% more powerful than conventional flat spray results. The assembly is rated at 2,500 psi and 202°F and includes a 24" insulated extension. At 1,000 psi the unit will put out two gallons per minute.

AS58 \$171.35

## Carpet Wand

This popular wand is now available to work with high- or low-pressure and high temperature. This precision, all-stainless wand is long which means a longer, comfortable stroke. It handles up to 500 psi, comes with two 11002 jets and an adjustable handle.

AW29 \$286.35

## 2" S-Bend Quad Jet Wand

- 4-jet design with 95015 v-jets gets the heat close to the carpet
- Low profile head and "S" bend design for ease of use
- 2" wand connection and 1.75" wand tube for great balance and airflow
- Stainless steel construction for durability, yet lightweight at just 8.5lbs
- 12" wide head with splash guard, designed for maximum recovery
- High pressure "K" valve model 251-30 with an easy to pull trigger

AW57 \$383.08

## Wet Vacuum Tool

Never wear out your carpet wand again. This heavy-duty tool with a stainless steel wand is designed for use on hard surfaces. Fitted with neoprene rubber blades, the wet vacuum tool will make quick work of standing water on any hard surface such as concrete. All water damage crews should have these.

AX10 \$142.60

## Edging Crevice Tool

Do all your edge cleaning from a standing position—fast, comfortable, effective. A must for RX-20 owners. No more bending, kneeling, or stooping to clean along base boards or in corners. No mess. Enclosed jet directs full force of the cleaning solution directly on the soiled carpet for great cleaning with no overspray.

AW80A \$291.33

## Swivel Long Stair Tool

- Comfortable • Single-jet • 32" Long • 9.5" Head • Built for Truckmount and Portable Use

AW20S \$399.49

AW20 Econo Long Stair Tool (not pictured) \$257.88

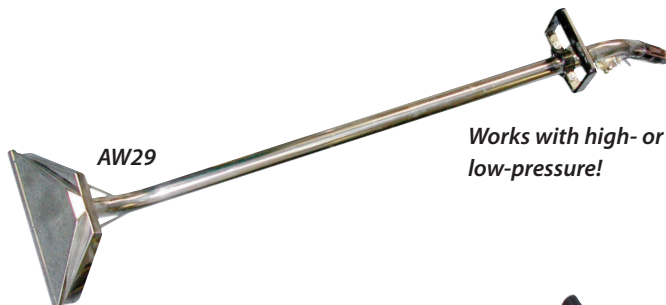


## Pressure Wash Gun

This ergonomically-designed gun is a great tool for all your pressure wash needs. Some features include:

- 1,500 psi rated • Insulated for use with hot solutions
- 1506 Stainless Steel V-Jet • 24" Straight extension (insulated!) • 1/4" Male Quick Connect

AS60 \$89.13



AW29

*Works with high- or low-pressure!*



AW57



*Pulls standing water from floor.*



*The revolutionary tool that every professional carpet cleaner needs!*



*Clean stair risers with ease!*





COMING SOON

### HydraMaster's NEW driMASTER®

HydraMaster's patented driMASTER® Upholstery Tool is unlike any tool you have ever used. Using new Jetless Cleaning Technology, it has no trigger valve, no spray jet, and never needs a second drying-pass. The solution is under constant flow, trained by the patented injector bar and slotted vacuum port system. The result is a highly effective cleaning tool that works without over-wetting or on-off heat loss. Even narrow areas can be cleaned without any over-spray. Durable, but lightweight, the driMASTER® Upholstery Tool weighs less than half of other upholstery tools.



### HydraMaster's driMASTER®

The driMASTER® Upholstery Tool... nothing short of amazing! High Flow/Low Moisture super-cleaning of fabrics is now a reality. Using a hyper velocity fluid system, the new driMASTER® tool shears away soil without over-wetting or messy over-spray. High flow Jetless Cleaning Technology leaves the fabric cleaner and 50% drier without a second pass.

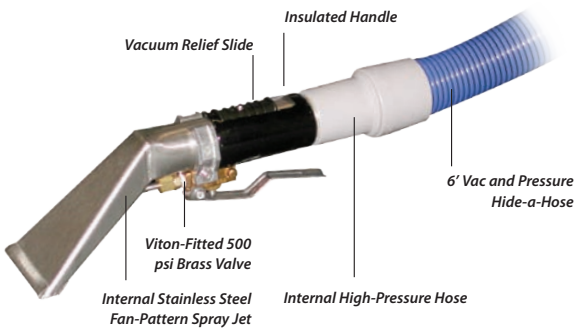
AW83      \$517.44



### "Easy Reach" Upholstery/Stair Tool

3" wide stainless upholstery tool designed to reach where others miss. Great for detailing cars as well as normal upholstery and stair cleaning. Can be used with pressures up to 400 psi.

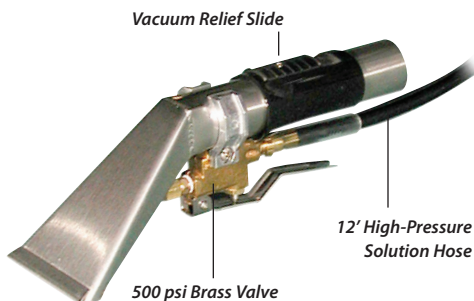
AW45      \$95.39



### Hydry™ Deluxe — Upholstery Cleaning Tool

Increase or decrease suction and moisture by adjusting the vacuum relief slide. This amazingly simple, improved version of our HyDry™ tool will revolutionize upholstery cleaning! With a new internal valve, 6' of vac and pressure hose (pressure hose runs inside the vac hose), and vacuum relief slide, the new Deluxe HyDry™ is much more effective. The HyDry™ Deluxe uses more water for better cleaning, yet gets the upholstery dryer! It works with portables or truckmounts, with 30–500 psi working pressure and handles up to 220°F. Also works with solvents. Never any overspray, dripping or puddles.

AW50D (3.5")      \$282.43  
AW51D (4.5")      \$309.44



### Hydry™ Original

This is the original HyDry™, but with improvements. For the contractor who doesn't like the internal solution hose of the HyDry™ Deluxe, this original version has an external hose and valve.

AW50A (3.5")      \$234.84  
AW51A (4.5")      \$249.38

## Carpet and Upholstery Tools



### Upholstery/Stair Tool

Low pressure stainless steel tool with valve functioning to 120 psi. 4.5" wide head, fully enclosed to eliminate splash and overspray.

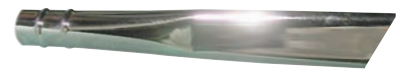
AW30 \$106.59



### Hand Vac Tool

The hand vac tool is used for vacuuming only. Can be used in combination with a spray gun to do stairs, around toilets or dry vacuuming upholstery. 5½" wide; fits 1½" vac hose. Polished aluminum.

AW74 \$14.89



### Crevice Tool

This 14" metal crevice tool is great to reach those places where your wand won't. Fits 1½" vac hose.

AW72 \$18.43



### Power X Pro Spot Machine

This outstanding design incorporates features you won't find in any other commercial spotting machine. From the slide-out handle to the double ball bearing urethane wheels, the Power X Pro spot machine delivers the best in high performance and ease of use. Power X Pro Extracting Tool included.

MA51 \$619.93



### Power X Pro Extracting Tool

Upgrade your current spotting machine with this professional heavy duty extracting tool. Features include: 1 1/4" vacuum hose, stainless steel detailing tool, and aluminum valve.

AW55 \$131.10



### Power X Pro Spot Machine with Heater

Same great tool as the Power X Pro Spot Machine (MA51), but with the addition of a built in heater. A high temperature solution hose has also been added. Power X Pro Extracting Tool is included.

MA51H \$838.35

### Wand Handle

Fits any 1½ - 2" wand. They give a comfortable firm, grip to any wand and are adjustable for operator comfort.

AW67 (1½")  
\$35.80

AW68 (2")  
\$40.39

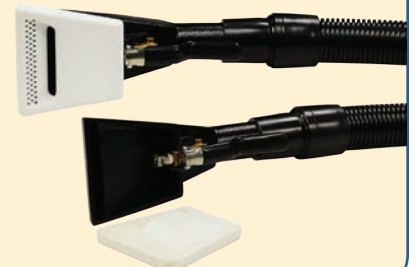


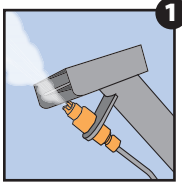
### Hydrokinetic Upholstery Cleaning Tool

Steam Way's patented Hydrokinetic Tool remains the standard of high velocity, solution shearing cleaning action. Many upholstery tools try to prevent or reduce over wetting by limiting the water flow, for fear of over spray and flow through into the foam and cushion. The Hydrokinetic Tool takes full advantage of the cleaning power of your truck mounted and high performance portable cleaning equipment. Cleaning with the Hydrokinetic Tool is faster, removes more soiling, and allows the fabric to dry up to 75% faster. Side-by-side comparison tests clearly demonstrate that at higher solution pressure and water flow rates up to 400 psi. The Hydrokinetic Tool remains the obvious choice at preventing over wetting and solution flow through, while maximizing high velocity solution shearing cleaning.

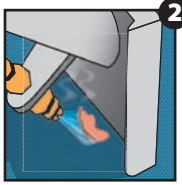
- Patented design allows for the spray angle, in relation to the fabric, to produce a greater shearing action to remove soil from the fabric.
- Open port vacuum chamber allows a full kinetic force of cleaning solution over and across the fabric, not through it.
- Clean faster, with no extra dry passes required.
- Eliminate overwetting and overspray when used as directed, even under the highest water flow conditions.
- Great solution flow reduces heat loss.

AW58 \$528.94

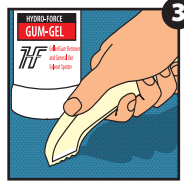




1 Attach the Gum Blaster to your solution hose. Run the solution until maximum temperature is achieved at the wand.



2 Place the tool so the jet spray hits the nearest edge of the gum spot. Slowly move the Gum Blaster away from you. The gum is peeled from the carpet and sucked away.



3 Apply four or five drops of Gum-Gel. Agitate lightly with the Gum Getter. This dissolves the last invisible gum residue, and it will come up with your regular cleaning.

### Gum Blaster Wand

Now it's truly fast and easy to remove gum with Gum Blaster! Equipped with a 1,000 psi stainless steel valve, this stainless steel tool is designed to work with a truckmount at 300 to 400 psi that can produce at least 170°F at the wand. The higher the heat, the quicker and better the gum is removed. The Gum Blaster can remove dozens of gum pieces in just a few minutes.

AW08 Gum Blaster Wand \$300.90



### Gum Gel

Gum Gel is a citrus solvent formulated to stay on the spot full strength and work fast. You won't find a better gum removal chemical! Also works on many other spots such as tar, grease, cosmetics and most types of ink. Gum Gel is merciless on gum but is safe for you and the carpet.

Dilut. = RTU RTU pH = N/A  
CS37QT \$18.60



### Gum Getter™

The Gum Getter™ makes gum removal from carpet a breeze. With just a few strokes over the gum, you do the work of 10-15 bone scrapers. Apply Gum Gel, stroke it with the gum getter and the gum will roll up for disposal. Also effective for any variety of spot and stain removal situations.

AC150 \$8.45



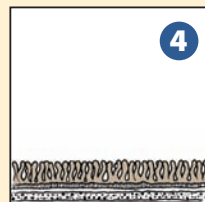
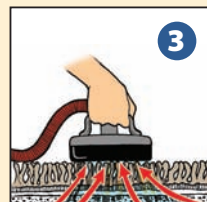
## Using the Spot Lifter to Make Your Biggest Challenges Easier

If you ask professional carpet cleaners what challenges they encounter on a daily basis, problem stains, pet urine, and spot wicking back would be high up on the list. With the Spot Lifter you have an incredible innovative tool that helps you solve all three major challenges. The Water Claw Sub-Surface Spot Lifter allows you to extract effectively from the sub-floor and carpet cushion all the way to the top of the carpet. It makes you more effective at removing any type of spill because you can flow so much water through the area without overwetting. It really shines on large liquid



spills, removing the spilled material from the backing up, virtually eliminating spots that wick back. It also serves as an invaluable tool on pet urine contamination, allowing you to effectively treat the contamination all the way to the subfloor without an injection system. Attach the spot Lifter to any portable or truck mounted extractor or spotting machine, apply your favorite spotter or deodorizer and watch it come out right before your eyes.

For more information on the Spot Lifter and Water Claw see page 26.







# Carpet and Upholstery Tools - Vacuuming



## Turbo Cat Zoom

*Dry Vacuum Attachment For Truckmounts Or Portables*  
The Turbo Cat Zoom dry vacuuming tool is absolutely indispensable. Attached to either a truckmount or portable vacuum hose, the TurboForce uses the available suction to power the vacuum head. Life expectancy of the unit is up to three times that of an electric head, and independent tests have confirmed that the

Turbo Cat Zoom maintains comparable cleaning results with electric heads. An aerodynamically-shaped body allows easy access under beds, chairs, and other furniture. The Turbo Cat Zoom should not be run at full speed from a truckmount. Damage may occur. Recommend use of a Vac Relief Valve.

**Other features include:** • Automatically adjusts to the carpet pile height. • Double-

edge cleaning • An agitator designed to pick up dirt right to the carpet cleaning limit. • Built to last • The body is molded using high-impact ABS, surrounded with a high-impact bumper guard. • The high RPM turbine wheel creates air turbulence required for superior cleaning performance. The support shaft has been designed to prevent belt breakage caused by hair, dirt, and other debris. • A cogged drive-belt reduces slippage, increases performance, and lasts considerably longer than conventional flat belts. • Comes with wand to fit 1.5" hose. Only guaranteed on machines that run 125 CFM and 125" of water lift.

AC160 \$135.70



## Hydro Vac

This vacuum powerhead is invaluable for vacuuming stairs, upholstery and many other hard-to-reach areas. Using the HydroVac with the TurboForce creates an unbeatable dry vacuuming solution. The HydroVac is adapted to fit 1.5" hose. The HydroVac should not be run at full speed from a truckmount. Damage may occur. Recommended use of a Vac Relief Valve.



Easy Maintenance—Hinged opening: easy cleaning of turbine.  
Versatile—Adjustable suction head for different cleaning applications and working positions.  
Precautions—Use with Dust Downer when vacuum source is portable or truckmount extraction machines. Utilize with truckmount on low speed.

AC171 \$45.94

## Back-Pack Vacuum *High Performance, Comfort, and Efficiency*

Vacuuming has never been easier. With the molded-in ergonomic backrest, these machines are a joy to use. Any vacuum will test to optimum performance when new. The true test of performance comes as debris fills the vacuum bag. In older tubular backpack designs, the bag bulges and stretches when it fills, contacting the sidewall and top of the motor, severely reducing airflow. The new Hydro-Force Back Pack's 3/4" per side increase in diameter and new bag support increase airflow and reduce motor heat, extending the life of the motor and allowing peak performance under all conditions, even when the bag starts to get full.

- AV52 10-qt. back-pack vac \$550.34
- AV52A (10 qt. back pack bags, 10-pack) \$28.31
- AV52B (HEPA filter) \$68.97



### Dust Downer

Protect your machine's blower from dust while dry vacuuming! The Dust Downer is a perfect companion to the TurboForce vacuuming tool and is very effective for duct cleaning. This unit may be placed in-line right next to the machine, or between the hose and wand. A constant supply of water sprayed into the vacuum hose ensures that any grit and dust drawn up from the carpet or upholstery is quickly put into solution. Dry vacuuming no longer needs to be a hazard for the equipment.

*Internal Jet*

**AH20 (2" hose) \$53.83**  
**AH18 (1.5" hose) \$60.38**



- Power: 1340 Watts / 1.5 h.p.
- Weight: 10 lbs. / Airflow 150 cfm
- Static Lift: 100" • Voltage: 115V
- Amperage: 11.5A dB: 67
- Filtration: 96.1% at one micron
- 10-qt. capacity

## Perky Spotter®

An effective non-toxic, ecologically safe all purpose cleaner for spot and stain removal on carpeting, upholstery, and clothing. Perky Spotter® is an odorless, water-based chemical that is safe to use around children and pets. Approved for all stain resistant carpets. Available in five sizes: 8 oz., wipes, 32 oz., 32 oz. Trigger Spray, and 1-gallon.



Part CS40E 8 oz.	\$4.58
Part CS40W Wipes	\$7.21
Part CS40QT 32 oz.	\$12.52
Part CS40S 32 oz. Spray	\$13.49
Part CS40GL Gallon	\$23.31

## Perky® Groomer

The Perky® Groomer 12" head reaches into corners and under furniture to keep your carpet looking as new as the day you had it installed. Simultaneously loosens and lifts soil before vacuuming, erases vacuum cleaner tracks, and provides the "like new" appearance without the vacuuming effort. Wherever you have carpet, you should have a Perky® Groomer.



AB22 \$13.42

## Perky Brush™

Considered to be Grandi Brushes' little sister, Perky Brush™ still has the same advanced grooming capabilities as the Grandi Brush™. Using a "push-pull" motion makes it easy to use and its small size is perfect for those compact areas where the Grandi Brush™ can't get to.



AB21 \$16.53

## Whizgroom®

A pocket sized fabric brush (upholstery and garment) designed to release lint and soil deposits on clothing and furniture. The short fine bristles lift and smooth velvets, velures, and other nappy fabrics like magic. The Whizgroom® can be used in cleaning screens, lint filters, computer keyboards, and tile grouting. Can be stored in a glove compartment and used as a snow and ice scraper for the windshield. The unique Whizgroom® is ideally suited to be used with Perky Spotter®.



AB33 \$1.84

## Handi Groom®

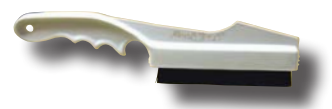
Designed as a pile conditioner for carpeting on stairs and in tight places. Also excellent for restoring the appearance and texture of high pile area rugs, rug fringes, and even sweaters. Compact and handy, but strong enough for stubborn dirt. Unbeatable when used with Perky Spotter®.



AB20 \$7.21

## Handi Brush™

A short, soft bristle light-weight brush, excellent for cleaning automotive fabrics, upholstery, velvet fabrics, Oriental, Persian and quality area rugs. Effective for dusting and lifting the nap of delicate draperies and fabric wall coverings. Excellent results are obtained when used with Perky Spotter®.



AB34 \$8.04



## Grandi Groom®

A standard for every carpet professional. The Grandi-Groom® is the big brother of the Perky® Groomer. Perfect for multi-level carpet pile and covers a larger area in a short period of time.

AB24 \$19.29  
AB24H Head Only \$15.11



## Grandi Brush™

This brush means business with a single row of nylon fibers specially designed to make it perfect for Oriental rugs, Persians, and velvets, as well as commercial grades, such as Berbers.

AB28 \$26.88  
AB30 Head \$19.67  
AB26H Handle \$9.35



## Grandi Combo

Two types of grooming heads attached to one handle. This unique tool features our Grandi Groom® head and Grandi Brush™ head for the best in combination cleaning.

AB19 \$41.37



## Grandi Groom to Grandi Brush Conversion

The conversion kit is the latest and greatest idea to make your current Grandi Groom® double as a nap brush. Secure the Grandi Brush™ onto your current groomer and you're ready for any type of carpet cleaning. Comes with Bracket and Grandi Brush™ head.

AB32 \$25.50



## Complete Spot Removing System

- 3 easy steps - Apply, Agitate, Lift
- Unique bottle design attracts attention
- Captures spontaneous sales
- Will encourage future sales
- Meets the needs of your customers

CS50 \$5.49



## IICRC S100 Carpet Cleaning Standard and Carpet Grooming

The ICRC certification requires that Pile Setting or Grooming is the fourth principle in professional carpet cleaning. The purpose is to assist with the evaporation, decreasing drying time, and enhancing the carpet's final appearance by removing rotary swirls or wand marks or distortion from the pile. Grooming aids in the uniform distribution of protectors or other post-cleaning treatments. Classes are available for all types of cleaning and restoration, please call PowerPlus to sign up for our next classes (714-635-9264)



## Large Horsehair Brush

Thousands of bristle ends stay in contact with the upholstery, even when the brush is wet. This is the best overall brush for upholstery agitation!

AB06 \$35.87



## Hand-Fit Horsehair Brush

The horsehair bristles on this brush are securely held in place with stainless steel staples, and the block is solid polypropylene. Thousands of bristles stay firm, even when wet, giving complete agitation without the harsh abrasion of synthetic brushes.

AB09 \$18.12



## Regular Horsehair Brush

Pre-condition your upholstery without harming the fabric. For comfort and economy, this is the brush!

AB08 \$19.48



## Handi Groom

This all-purpose hand held groomer is for stairs, automobile carpet, fringes on orientals and many other uses. The special "Spatula" on the handle can be used to scoop up excess spillage and residue when spotting.

AB20 \$7.21



## Velvet Carding Brush

Over 2,000 strands of cadmium-plated steel wire will groom and set the nap of fine velvets with no worry of texture damage. A must for the professional.

AB04 \$28.72



## Brass Velvet Brush

This brush, preferred by thousands of professionals, is used to finish and fluff fine velvets. Also great for pet hair removal!

AB02 \$10.74



## Utility Scrub Brush

White nylon bristles are held in a molded, chemical-resistant block that will not crack, deteriorate, or wear out. Upswept handle eliminates skinned knuckles.

AB14 \$11.94



## Hand Fit Scrub Brush

Designed to be used on a wide range of carpet and durable upholstery fibers. DuPont nylon bristles and plastic block. Excellent for hard surface restoration cleaning.

AB12 \$9.64



## Nap Brush With Handle

The best option for grooming smooth plush carpet. This brush will set the nap after cleaning and may also be used to agitate traffic areas on commercial-type carpets.

AB18 \$34.43



## Spotting Brush

The Spotting Brush has nylon bristles to give extra stiffness and long life, and is a required part of any professional spotting kit. The brush is best used by tamping rather than scrubbing the soiled area.

AB10 \$11.25



## Brush Cleaning Comb

This specialized tool was designed to remove lint from nap, shampoo, and velvet brushes or any other brush that you own.

AB16 \$9.43



## Telescopic Lamb's Wool Duster

Natural lamb's wool dusters are excellent for removal of light smoke, dust and soil from walls and nearly all surfaces. When soiled, simply wash, dry and reuse. Telescopic handle included for hard to reach light fixtures, ceilings, etc. One Size only. Pole telescopes from 30"-45".

AX07 17" \$12.48



## Natural Ocean Sponge

Nothing beats the natural ocean sponge when gentle agitation is required for cleaning delicate fabrics.

AU30 \$18.10



## Hydra Sponge

The first and only synthetic sponge built to perform like a natural sponge. The Hydra Sponge holds extra water, creates a rich foam, is extremely durable, and will stay soft and pliable at all times. Great for upholstery cleaning, wall washing, and more.

AU28 \$9.14

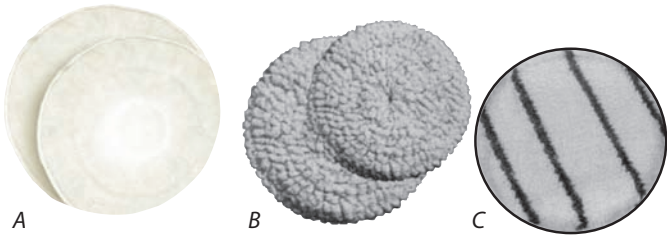


## General Purpose Sponge

This is the sponge to use for cleaning walls, counters, ceilings, equipment or anything else where gentleness isn't necessary. It's always a good idea to have a few of these on your truck just in case.

AU29 \$.68





## A. Microfiber Bonnet

Microfiber bonnets are multipurpose for carpet and hard surfaces where mild abrasion and superior absorptions are desired. This microfiber is positively charged and split into 17 strands which has amazing pulling power for soil. The bonnet absorbs and holds more soil. Great as a last step cleaning and drying step for commercial carpet and for cleaning hardwood floors.

AC88 17.5" \$38.47 AC92 19.5" \$53.69

## B. Full Bonnet

These heavy-duty full bonnets give the great absorbency and aggression of 100% cotton. Great for drying carpet as a last cleaning step or used as a primary cleaning bonnet.

AC85 17" \$40.19 AC86 21" \$48.68

## C. Speedtrack Bonnet

These low profile bonnets have scrubbing strips of polypropylene designed to aggressively clean the dirtiest carpet. The highly absorbent synthetic fiber will draw up moisture and soil and can be repeatedly laundered.

AC87 17" \$28.64 AC89 21" \$33.32

## Hand Bonnet

Use to hand bonnet stairs and along walls. Also provides agitation and absorption in shampoo cleaning of upholstery. Some cleaners use it as a bonnet on small rotary tools.

AC93 8" \$21.74



## Bone Scraper

The professional spotting tool. This tool is used to agitate and work chemical into a spot and lift off excess material. Impervious to the various spotting chemicals, the bone scraper is an invaluable tool for the spotting professional.

AU32 \$6.84



## Dry Cleaning Sponge

These rubberized sponges are designed to remove soot from fires in a dry state. The tiny porous cells of the sponge lift soot from surfaces quickly without smearing. May be reused many times by washing. Ideal for painted surfaces, wall paper, acoustical tile, paneling, lamp shades, paintings, and other surfaces. Individually wrapped. 36 to a case.

AX26 (6x3x2") \$3.61  
AX27 (8x3x2") \$4.55



## The Fixi-Clamp

Get a grip on those hard-to-reach cleaning problems. The Fixi-Clamp grips sponges, rags, chamois and mops simply by tightening the locking collar. Combine with a telescopic pole for an instant high-rise cleaning tool!

AX50 Fixi-Clamp Head \$36.88  
AX64 18' Extension Pole \$88.52  
AX66 8' Extension Pole \$47.99



## Hair & Lint Lifter

Easily lift cat and dog hair from upholstery. This 50-sheet adhesive roller makes quick work of "hairy" upholstery. Great resale item for your customer.

AU12 \$5.74



## Blue Shoe Covers

These serve the same purpose as the white shoe cover. They're built to last (but not as long as our heavier white shoe covers). Perfect to use as a giveaway to your customers because they won't need to use them for very long and they're priced low. Pack of 50.

AX98B pack of 50 \$11.48



## Shoe Covers

These shoe covers protect footwear and allow technicians to leave the work area without tracking soot, soil, and filth throughout the structure. Also creates a powerful impression on the customer that you care about their property. Simply pull on or off over footwear. One size fits all.

AX98 (pair) \$.45



### Sonin Laser Targeting Range Finder

Professional ultrasonic distance measuring tool with laser targeting. Eliminates guesswork! Measures up to 60 feet easily and accurately. • Uses high-visibility laser to zero in on center of target area (for reference only) • Accuracy to within 99.5% (+ or - 1/4") of distance measured • Default measurements in feet/ inch/ fraction, decimal feet, yards or meters • Adds, subtracts and computes area and volume • Tracking & validate modes • Stores up to 7 measurement or calculations with easy recall • Protective pouch and instruction guide included • Requires one 9 volt battery (not included) • One year limited warranty • RECOMMENDED FOR INDOOR USE



AC34 \$45.94

### Pill Remover

Finally, the easy-to-use tool every professional upholstery cleaner has been waiting for. No more awkward razor blades or pumice stones. Just lightly brush over the upholstery and the nubs, pills, lint balls, and even animal hair come right off! • Easy to use • Refill kits available • Removes lint, hair and fiber pills • Comes as a set: Medium for delicate fabrics, Coarse for those tough nylons and olefins



AU13 \$22.94  
 AU13R Pill Remover Refills (3 medium and 3 coarse) \$20.64

### Busy Pockets™

The Busy Pockets™ bucket caddy is there when you need it most, carrying all your spotting and upholstery cleaning accessories and chemicals! It comes with a 10" long adjustable strap. There are outside pockets and tool holders that fit just about any tool. It also contains a large velcro pocket closure for valuables. Fits standard 5 and 3½ gallon buckets (not included). Try the Busy Pockets™ with Stor-Ease™ bottles, pg. 63.



AX106A \$44.79

### Belt Packs

These belts are great for the professional cleaner and restoration specialist. Carry your carpet knife, measuring tape, spot remover, bone scraper, moisture detector, carpet pads and blocks, pencil. You name it, Belt Pack will carry it! Made from the toughest two-ply cordura nylon, these belts are built to last years under everyday use.

AX108 Single \$22.94  
 AX86 Double \$39.25



### Towel Clip

Carry a spotting towel with you at all times by attaching it to your belt loop using Hydro-Force's Towel Clip.

AX87 \$6.85



### Large Towels

White 16" x 26" absorbent terry hand towels. A must for spotting, upholstery cleaning, wall washing, and red stain removal. 100% cotton heavy duty bar towels.



AU16 \$2.06

AU17 (16"x18") \$1.15

### Rolling Tape Measure

Measure square footage quickly and conveniently. Simply roll this great tool over the carpet, width and length. Multiply and you have square footage. Our Rolling Tape Measure is calibrated in tenths of a foot for easy calculations. Look professional, be professional with Rolatape.

AC41 \$45.94





# Carpet and Upholstery Tools



## Carpet Skidders

- Skidders let you move furniture with little effort! Now it takes only one person to move heavy furniture.
- Use Skidders on carpeted areas. Simply place one Skidder under each leg of furniture, then slide.
- It's like magic! No back injuries from lifting. No more broken furniture legs. Just slide it with Skidders.
- Carpet cleaners use several sets of Skidders. Leave Skidders under furniture, replace with blocks or carpet protectors after cleaning.

AC15 4" (set of 4) \$22.43  
 AC16 8" (set of 4) \$45.94

## Lift Buddy

No more need to struggle while putting blocks underneath the heavy couch. Simply slide your Lift Buddy under the edge of the couch and push down on the handle. The couch end lifts effortlessly and allows you to slide your styrofoam blocks under the couch's legs without any strain at all.



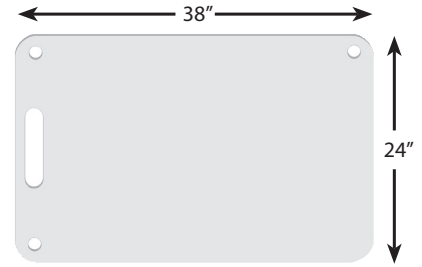
AC112 \$62.01



## Florguard

Use Florguards when moving major appliances. Florguards will prevent damage to floors from sharp edges and the weight of the appliance. A heavy refrigerator can leave indentations in some floors - but not with Florguard! Strong and durable for use time and again. Set of two.

AX150 \$45.03



## Scuff Shield

Scuff Shield is a must for any restoration. Move refrigerators, stoves or any appliance without floor damage. Protects hardwood, vinyl and ceramic.

AX151 \$63.19

*\*Additional shipping and handling charge may apply.*



## Forearm Forklift

Lifting straps for professional and occasional movers. This leverage tool is proven to reduce costly damage and prevent painful back injury. The Forearm Forklift's design encourages proper lifting techniques which make the items you carry seem lighter.

AX116 \$27.54

# EZ Moves™ THE ORIGINAL FURNITURE SLIDES™

ALLOWS ONE PERSON TO EASILY MOVE FURNITURE AND MORE!

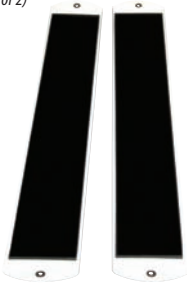
Make your next move an

EZ Move™!



## EZ Moves™ 4' Slides

AC023 \$32.76  
 (Set of 2)



## EZ Moves Pro™ (11.5" x 6.75")

A little larger than the original EZ Moves with heavier construction for durability. (Set of 4)

AC028 \$33.29



## EZ Moves™ Hard Surface Pro

A soft version for heavy moving on hard floors.

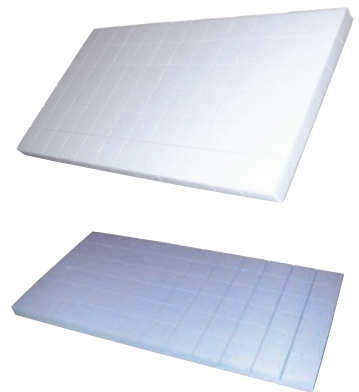
AC027 (package of 4) \$24.58



### Ultra Strong White Styro-Blocks

These blocks win top honors for high-density, strength and crumble-free separation. Ready to snap off, these blocks will never leave a mess and are pure white. Blocks are 2" x 2" x 1" in multi-block strips packed over 1,000 per case.

AC44 \$28.69



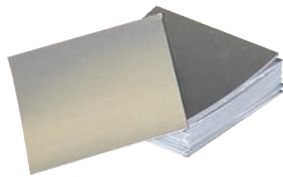
### Premium Blue Styro-Blocks

The blue block, which measures 2" x 2" x 1", has the highest compressive strength available! This premium block will never leave a mess as it always snaps off cleanly. 1,008 blocks per case. The best block money can buy!

AC45 \$34.44

### 3x3" Heavy Foil Protector Pads

Foil on one side, thick paper on the other, these pads are the traditional cleaner's choice for preventing rust and stains on legged furniture.



AC21 (5,000 per case) \$60.67  
AC21A (1,000 per case) \$13.69

### Plastic Protector Pads (3x3" or 4x4")

"The" solution for protecting furniture. These pads come in a small block of 50. Just "zip" off one at a time. Clear plastic, completely moisture proof.



**3x3" pads**  
AC19 (5,000 per case) \$35.50  
AC19D (1,000 per case) \$10.87  
**4x4" pads**  
AC20 (5,000 per case) \$57.44  
AC20A (1,000 per case) \$16.04

## Carpet Repair Tools <<<<

### Kool Glide Carpet Seam Iron - No mess! No glue!

The Kool Glide carpet seam iron is a revolutionary, lightweight, handheld electric tool that melts adhesive using a pre-programmed heating cycle, controlled by a state of the art microprocessor. Precise amounts of adhesive and tightly controlled heating provide for a consistent low-profile seam. The tool never gets hot, so there is no danger of burns to the operator or to carpet. The tool never touches the adhesive, so there is no messy cleanup. This technology is especially useful in repairing holes in carpet and putting new seams in carpet.



AK086 \$409.40

See the instructions and photos below for removing a stain and replacing it with a new piece of carpet using the Kool Glide Carpet Seam Iron and Kool Tape. When a spot cannot be removed sometimes a hole can be cut in the carpet and replaced with a clean piece of carpet from a closet. Using a Cookie Cutter, carefully cut out the stained piece of carpet. A piece of Kool Glide Seaming Tape that is larger than the hole is then placed under the carpet. Place the clean piece of carpet over the tape with the nap laying in the same direction. Lay the Kool Glide Seam Iron over the carpet for a few seconds to allow the tape to bond to the backing of the carpet. Gently roll the carpet with a Carpet Seam Roller to lift the pile and to make sure the carpet has not raised.

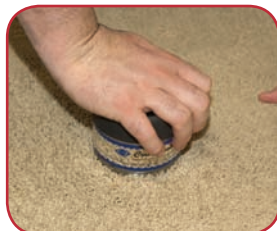


### Kool Tape

The only tape that can be used with the Kool Glide Carpet Seam Iron.

AK088 20' \$14.38

AK089 66' \$20.78



# Carpet Repair Tools - Pet Odor Deodorization

## Injectimate by Hydro-Force

Use the Injectimate wherever sub-surface injection of chemicals is needed. It will replace the carpet syringe, as it can be used in urine decontamination to inject enzymes and odor counteractants through the carpet backing. It allows you to mix your solution in a gallon container and to inject directly from the container without having to fill a syringe. Every squeeze of the unit automatically injects 5 milliliters of solution.

AC13 \$42.49  
PI01 Replacement Cylinder \$6.04



## Carpet Syringe

This large capacity (60ML) syringe is perfect for injecting deodorizers deep into carpet or upholstery when neutralizing urine odors. Works well for injecting adhesive for delamination or bubbles in glue-down carpet.

AC14 \$8.34  
AS13CN Extra Needle \$2.38



## Small UV LED Flashlight

New! Focused beam UV LED Technology which produces a beam 1000% brighter than traditional fluorescent black lights. Great for detecting stains, pet urine, and uses in the kitchen and bath up to 30 feet away. 60 hours runtime on 3 C cell batteries (incl.) and rated at 100,000 hours of bulb life. Use during the daylight, but dim lights for best results. Amber safety glasses rated at 99% UV protection are recommended to prevent eye damage. Device emits radiation. Avoid direct eye contact. (Batteries included)

AX172 \$45.99



## Amber Glasses

AX91C \$5.69

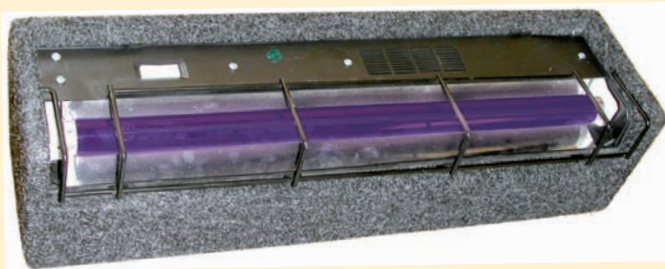


## UV XENON Flashlight

- BRIGHT! You can leave the lights on to use this beam.
- Use it to quickly sweep for urine stains.
- Powerful. Outperforms lights costing \$400.
- Never dims. Special circuitry makes it so the light doesn't dim as the batteries weaken. When the batteries get too weak it just stops working until you re-charge or replace the batteries.

Three powerful Cree xLamp emitters power this incredible UV light. Producing 600mW of total power this light can fluoresce targets at 100 feet. Current regulated circuitry maintains constant output and typically runs for 8+ hours on a single set of four C cell batteries. LED lifetime is rated at 10,000 hours. Amber safety glasses rated at 99% UV protection and recommended to prevent eye damage. Device emits radiation. Avoid direct eye contact. (Batteries not included)

AX13 \$286.35



## Long Tube UV Detection Light

Detection Light reacts to all urine accidents • Instantly spots fresh or old accident areas • Built with metal grill that protects bulb • Lower chemical costs by treating affected areas only!

AC04 \$102.35  
PPA02 Replacement Bulb \$23.01



## Ultraviolet AC/DC Rechargeable Lantern featuring xLamp LED Technology

- Reliable solid-state UV emission from seven xLamp LED's
- 395-400nm peak emission, 1400mW total emission power
- Rechargeable sealed lead acid battery
- Charges from AC wall outlet or 12VDC car charger (included)
- Features High/Med/Low power settings
- Locking trigger switch for continuous operation
- Includes LED charge indicator on top
- 8.5" long x 4.5" wide
- LED lifetime of 10,000 hours
- Most powerful solid-state UV flashlight in the world!

AX132 \$482.94



## The World's Best Carpet Re-Stretcher

This ingenious, easy-to-use carpet stretching tool will save you time and thereby increase your profits. The ready to use Behr Claws let you get to work right away without having to assemble your power stretcher every time you want to use it. The compact design stores neatly behind the seat of your van. Its claws grab hold of the tackless and pulls the carpet to the proper tension. After securely attaching the carpet to the tackless, simply remove the Behr Claws, trim the carpet, and tuck the edge under the baseboard. Quick, simple re-stretches and re-lays are what Behr Claws is about. You can buy Behr Claws alone to use with your existing power stretcher, or buy the optional Power Stretcher Junior Head. Each sold separately.

View instruction video online at [www.behrclaws.com/video.html](http://www.behrclaws.com/video.html).

- AK002 Behr Claws \$343.85
- AK003 Power Stretcher Junior Head \$272.60



Power Stretcher Head not included.

### Cookie Cutter

The Cookie Cutter is a quick simple tool for professional carpet restoration that utilizes carpet remnants or carpet from hidden areas. It is perfect for cigarette burns and other small damaged areas.

- AK084 \$33.15
- AK087 Replacement Blades (10 pk) \$12.18
- AK083 Adhesive Disks (100 pk) \$48.24

### Carpet Seam Roller

Extra wide 5" head reduces dishing in seam area. Comes with a durable and lightweight superior die cast handle that makes it easier move forward and backward without altering position of carpet backing. Get stronger seams and increased hot melt transfer into carpet back with stationary roller shaft.

- AK004 \$16.49



### GT Power-Lok Stretcher

Power-Lok switch handle locks into 17 different "stretch/pattern holding" positions. Unique swivel head for stretching angles or corners. It allows for variable pin penetration for different carpet thickness. A standard set includes one power unit, tail block with wheels, three 3' extension tubes, Quik Lok tube, and the wheeled carrying case.

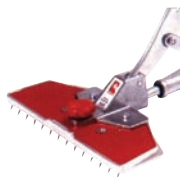
- AK066 \$679.09



### Junior Power Stretch

18" spring-loaded tail block with wheels provides additional support. You can stretch up to 23-1/2' with included tubes. The low profile head is easy to span with the knee kicker. A standard set includes one power unit, tail block with wheels, three 3' extension tubes, Quik Lok tube, and the wheeled carrying case.

- AK068 \$579.92



### Ultimate Spotting Kit

- 1 AK086 Kool Glide Iron
- 1 AK088 Kool Tape
- 1 AK004 Seam Roller
- 1 AK084 Cookie Cutter
- 1 AC23 Duckbill Napping Shear
- 1 AV84 Soft Side Bag

- AK090 \$569.25

### 3 1/2" Solid Wheel Carpet Seam Roller

Reduce "pocking" and deformation of carpet yarn with solid nylon rollers. Rugged steel frame and large handle provide firm grip.

- AK006 \$27.03



### Cushion Back Cutter

Cut all thicknesses of cushion-back carpet and conventional carpet with adjustable blade depth. Two blades lock into position for close, precise cutting. A direct-pressure blade knob holds blades tightly in place. It is constructed of stainless steel for maximum durability and an ergonomic grip for comfort and control. Includes 15 Heavy Duty Slotted Blades. (Uses AK024 blades)

- AK018 \$37.27



### GT Loop Pile Cutter

Efficiently cut most loop pile carpet regardless of thickness. It has a unique two-blade design that accommodates both left and right positions for cutting closer to the yarn edge. "Direct Contact" locking design keeps blades securely in place. It allows for better cutting angle and easier blade insertion. Constructed of stainless steel for maximum durability and an ergonomic grip for comfort and control. Includes 15 Heavy Duty Slotted Blades (Uses AK024 Blades)

- AK020 \$44.79



### Deluxe Grip Pouch

Holds tools firmly in place with special leather insert grips. It is perfectly constructed of 100% leather with double stitching. It has a slot to fit directly on the belt. 1 1/2" x 4 1/2" x 3/4"

- AK032 \$20.64





## Adhesive Applicator

Designed to apply seam sealer to carpet backs. Comes with an applicator nozzle and 8 oz. plastic squeeze bottle.

AK070 \$2.27



## 4" Glue Sticks

Excellent for most carpet and sheetgoods excluding vinyl backs. Make repairs disappear with our translucent hot melt glue stick that cools almost clear. 1/2" diameter fits most glue guns. 30 per box.

AK072 \$ 7.42 / box



## Deluxe Glue Gun

Works twice as fast as conventional glue guns. Double powered solid state heater warms up in just three minutes. Extrudes up to 2-lbs. of glue per hour. Fits easily into carpet seams and hard-to-reach areas with its extra long nozzle. Spring-loaded trigger eliminates glue back-up and gun damage. 80 Watts at 400°F

AK074 \$109.19



## Carpet Installation Tool Kit

Includes: 24" metal tool box, deluxe knee kicker, GT conventional carpet trimmer, cushion back cutter, carpet seam roller, razor blade knife, utility knife, base molding lifter, leather tool pouch, ripping hammer, napping shears, stair tool, seam adhesive applicator, chalk reel and white chalk refill.

AK052 \$438.75



## Linoleum Knife

Cuts linoleum and vinyl sheetgoods. The blade is high carbon steel. Makes accurate, even cuts without burrs.

AK028 \$8.57



## Floor/Wall Scraper

Angled head provides "clean shaving" cutting action, perfect for stripping floors, walls and wall-paper. Features three blade clamp screws for maximum blade holding power and flexgrip anti-fatigue vinyl hand grip.

AK036 \$12.60



## Multi-Purpose Adhesive 3000

A solvent-free, standard-grade, latex-based multi-purpose adhesive. Adhesive has a good slip time and excellent grab. Rated for residential or commercial application.

AK080 (gallon) \$9.14



## Chalk Reel

Special formula prevents caking and clotting.

AK038 \$14.89



## Base Molding Lifter

Specially curved design with notched ends for easy nail removal. Engineered from high carbon forged steel.

AK046 \$21.79



## Xtra 340 Heat Bond Tape

This unique adhesive formula provides extra adhesion, extra quick initial grab, and extra long working time. Heavy woven fiberglass scrim provides extra stretch holding power. Specifically for heavy commercial installations. Low smoke and odorless, and environmentally safe.

AK076 (22 yards) \$13.17



## Hot Melt Carpet Seam Tape

Contractor Grade hot melt carpet seaming tape. For commercial and residential foot traffic. 22 yards.

AK075 \$7.64



## Solvent-Free Universal Carpet Seam Sealer

A solvent-free adhesive for seaming carpet edges to prevent unraveling and/or delamination of carpet backings and yarns, and to repair bubbles in installations. Use with polypropylene, jute, urethane, latex unitary and woven backed carpets. It dries clear and is easy to clean-up while wet.

AK078 (250 ml) \$13.85



## Rubber Mallet

Multi-purpose rubber mallet is great for tapping down metal moldings. Sturdily constructed with a 20 oz. white rubber head on a tapered hickory handle.

AK048 \$26.39



## Stair Tool

Use to set carpet into tack strip, drive carpet into gullies and crease carpet along wall line. It comes with a cushioned, slip-resistant handle and a checkered head prevents the hammer from slipping when securing carpet. Heavy duty blades easily set carpet into stairway crevices. Made from forged, chrome-plated steel for durability.

AK050 \$24.02



## Adjustable Straight Edge

Easily extends from 19 3/4" to 36 1/2" with handy one-knob adjustment. Extra light aluminum construction and conveniently small to fit in tool case.

AK060 \$29.27



## 8 oz. White Chalk

AK040 \$3.02



## Razor Blade Knife

- Safety-guards to keep blade firmly in place
- Easy-open knob with bail to make blade changes more convenient
- Checkered handle for a slip resistant grip
- Rugged lightweight precision die cast aluminum with long-lasting baked epoxy finish
- Handle stores additional heavy duty slotted blades, three blades included



Uses AK024 Blades

AK022 \$7.16

## Heavy Duty Slotted Blades

- 10-blade blistercard
- Fits the GT Conventional Carpet Trimmer, Cushion Back Cutter, GT Loop Pile Cutter, and many more.



AK024 \$3.43

## 10" Aviation Snips

- Powerful leverage allows easy metal cutting
- Serrated blades prevent slip-out
- Cut notches, shallow curves or straight cuts
- Vinyl covered handles for comfort



AK034 \$22.98

## Cool Shield® Heat Bond Iron

The Cool Shield Heat Bond Iron melts heat bond tape quickly and easily while maintaining the cooler top shield temperature. Even on the highest setting of 425° the Cool Shield® reaches a maximum heat shield temperature of only 256°.



- Patented double heat shield minimizes deforming of carpet backing and face yarn
- Top heat shield stays up to 175° cooler than sole plate
- "S" shaped heating element provides even heating to plate
- Grooved Teflon® base for fast, easy clean-up
- "Comb Profile" end on base plate forms ridges in adhesive to the end of the seam
- Streamlined, low profile design allows for easy carpet seaming
- Thermostat indicator light shows when iron is heating

AK044 \$123/07

## Carpet Puller

- Unique design provides maximum pulling power
- Serrated clamps provide firm carpet grip
- Large comfortable handle
- Solid die-cast aluminum



AK062 \$29.52

## GT Conventional Carpet Trimmer

- Trims carpet neatly at the wall and under toe kicks
- Five-position folding handle moves easily in hard to reach areas
- Quick and positive vertical and horizontal adjustment
- Re-designed blade holder, anti-slip rubber handle and hardened stainless steel guide
- Includes 20 Heavy Duty Slotted Blades

AK026 \$67.79

AK054 Replacement Blades 100 pk. \$11.44



## Deluxe Knee Kicker

- Length easily adjusts from 17" to 21"
- Lightweight, durable die cast aluminum body
- Exclusive non-slip checkered hand grip
- Foam-filled seamless bumper pad
- Easy to read, easy to adjust pin depth dial
- Center grooved head for adjusting power stretcher head
- Comes with a custom molded carrying case



AK042 \$129.40

## Duckbill Napping Shears

This is a must for cleaning and installation technicians. Duckbill design lays flat on the carpet while curved handles keep fingers above the carpet.



AC23 \$28.68

## Strip Cutter

- Long jaws cut architectural strip
- Powerful cutting force - 8 to 1 leverage
- Rugged, forged steel construction
- Blade storage in handle



Uses replacement blades: CT010

AK008 \$51.93

## Strip Cutter Blades

- 1.86" long x .45" long x .038" thick
- 6-blade blistercard



AK010 \$4.21

## Carpet Shears - 10"

- Made from the finest quality high carbon steel
- Superior cutting ability and durability
- Accommodates large hands comfortably with extra wide, cushioned handle openings
- Knife edge sharpens easily on stone

AK014 (10") \$33.75

AK016 (12") \$56.73



## Nail Driving Bar

- Constructed of cold forged carbon steel for an extra long life
- Features a magnetic head to hold nails in place for easy starting
- Unique design to access hard-to-reach places such as: under radiators, toe kicks, overhangs and next to glass doors

- Soft, no-slip handle

AK030 \$57.44



## Hinge Pin Remover

The Hinge Pin Remover is made of nickel-plated, hardened steel for durability. The pin end pushes the hinge pin up, the wedge end forces the pin cap up. The large hammer strike area helps reduce hammer deflection.

AK092 \$21.79

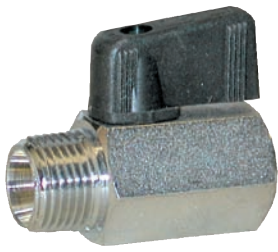






## Premium Ball Shut-Off Valve

This chrome-plated brass and steel valve is the latest design for a tough, long-lasting valve. Tested in our industry with thousands of hours of heavy-duty use, this ball valve gives you lasting quality. Spread thread design eliminates the need for an additional adapter nipple. AH54: 1/4" fp x 1/4" mp • AH54B: 3/8" fp x 3/8" mp



AH54 1/4" \$13.74  
AH54B 3/8" \$14.48

## Econo Ball Shut-Off Valve

Has the same size and features as our regular AH54 ball valve but is restricted to a maximum 400 psi. Sized to fit 1/4" ends on solution hose where a shut-off is necessary.



AH56 1/4" \$7.53

## 5-Quart Container

Increase your efficiency by having each chemical in its own ready-to-use jug. Attaches easily to the Hydro-Force™ sprayer. Heavy, durable plastic!



AS30 \$4.82

## Description Label

Label each of your chemical jugs and prevent the need to open each container to find chemicals. Plastic, self-adhesive. Fits the AS30 5-quart container.



LM93 \$.45

## Metering Tip Kit

Make your Hydro-Force even more versatile! You can dilute concentrated chemical automatically at any of eight standard dilution ratios. Simply insert a new color-coded metering tip to change dilution. Laminated instruction sheet included.



Note: The standard dilution ratio for the High-Pressure Hydro-Force is 1:8 as it comes from the factory. The Low-Pressure is 1:4.

NA0816A (high press.) \$19.40

NA0816B (low press.) \$17.53

## Quick Connects

These quality Parker quick-couplers are manufactured to the highest standards in brass. High-pressure design and durable materials assure reliable sealing. They also feature a double O-ring seal for increased reliability. These couplers are interchangeable with other manufacturers' quick connects.



100009 1/4" male \$7.30  
100008 1/4" female \$13.69  
PAF01 3/8" male \$7.80  
PAF02 3/8" female \$17.80

## Heavy Duty Quick Connects

Hydro-Force™ brand quick connects are an outstanding value, offering the highest quality standards in the industry. These brass quick-connects have a high pressure, double o-ring design. These couplers are also interchangeable with other manufacturers' quick connects.



AH102 1/4" male \$5.38  
AH101 1/4" female \$10.89

## Secure Loc

Prevent accidental separation of solution hoses forever with the SecureLoc 1/4" female brass locking quick connect. Upgrade your quick connects with every purchase of solution hose or quick connect replacement. Secure Loc quicks are made by Parker.



Twist to lock

NA0703 1/4" female \$19.94

## Stainless Steel Quick Connects

Male and female 1/4". Will interchange with brass quicks.



NA012 1/4" female \$37.87  
NA010 1/4" male \$21.41



### Carry-All Tray

The ultimate carrying tray for your spotting kit. This handy tray is large enough to carry all of your specialty spotting chemicals and accessories. Strong poly plastic will give years of service. Useful in many other cleaning and restoration situations!

- AU10 8"x19"x13.5" \$22.94
- AU10B 5.25"x16"x11" \$20.64
- (Not Shown)

### Stor-Ease™

You can mark STOR-EASE™ bottles for identification of chemicals. No more guessing what's inside! Also, these bottles have a squirt cap for easy pour and a wide mouth for easy fill! Quart Bottle. Don't carry gallons of cleaning agents into your customer's home. Transfer to STOR-EASE™ quarts and carry all the products you might need. Makes a great upholstery kit combined with the Busy Pockets™!



- AS07 \$2.58

STOR-EASE™ bottles meet D.O.T. and OSHA requirements

### Bottle Proportioners



Measure out your additives quickly and easily with just one squeeze of the bottle! Operation is simple and efficient. First, adjust the regulator to the desired level by turning the chamber. Next, squeeze the chemical into the chamber until the chemical passes the regulator. Wait momentarily as excess chemical drains back into the bottle. Then just pop open the lid and pour out your pre-measured chemical. Proportioner attachments are available in gallon and quart sizes.

- AX190 (fits quarts) \$3.97
- AX191 (fits gallons) \$4.43

### 10 & 14 Quart Buckets

Calibrated for exact measurements, these are the perfect size for mixing upholstery scrub formulas, wall washing or any other cleaning task. Includes comfort grip handle and easy-pour spout.



- AU86 10 qt. \$10.29
- AU88 14 qt. \$14.89

### Measuring Cups

Stop the "Glug, Glug" method of measuring chemicals. Each cup is calibrated for exact measuring. Don't guess or make a mess, use the right tool and quit wasting money!



- A. AX25 16 oz. \$3.23
- B. AX24 8 oz. \$1.82
- C. AX18 4 oz. \$1.14
- D. AX19 2 oz. \$.37



### A. Five-Gal Headpack for Truckmounts

- AX101 Square \$11.58

### B. Spigot for Headpack

- AX101A \$5.22

### C. Gallon Jug

- Gallon container with lid. Six per case.
- AX105 128 oz. \$3.15

### D. Spotting Bottles

- AS06B 32 oz. with lid \$2.00
- AS03 16 oz. with lid \$1.54
- AU40 4 oz. with lid \$1.08

### E. Wide Mouth Gallon

- White plastic wide mouth gallon with lid. Sold four per case.
- AX103 128 oz. \$2.81

### F. Five-Gallon Pail General Purpose

- AX100 pail only \$10.29
- AX102A lid for pail \$3.92

### G. Five-Quart Container with Lid

- Increase your efficiency by having each chemical in its own ready-to-use jug. Attaches easily to the Hydro-Force sprayer.
- AS30 128 oz. \$4.82

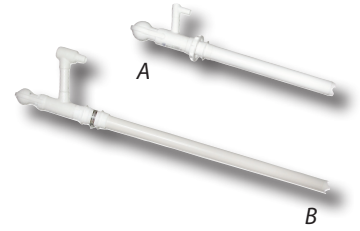


## Drum/Pail Pump

Tired of lifting and spilling contents of pails or using a siphon on a drum? Replace those old methods with these unique double action pumps. They deliver the chemical at low pressure in high volume. The design of the pumps results in no friction and no parts to wear or jam. Both pumps are compatible with acid or alkaline cleaning chemicals with solvents. Do not use with strong solvents.

A. AX161 Pail Pump \$57.44

B. AX162 Drum Pump \$80.44



## Soft Touch Valve

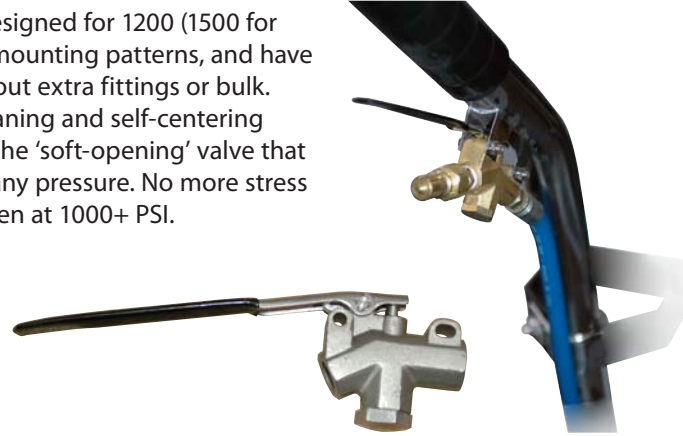
The "soft opening" control valve makes wands easier to use with longer life. Designed for 1200 (1500 for stainless steel) PSI, and tested at higher pressure, these valves are for popular mounting patterns, and have retrofit brackets available as well. 30° offset is ideal for your solution lines without extra fittings or bulk. Our Stainless Steel ball and Teflon seat makes a long-lasting seal and is self cleaning and self-centering every time. The combination of these features and the design make this valve the 'soft-opening' valve that is becoming so popular in the industry and allows you to throttle the valve at any pressure. No more stress on the hands as the 'soft opening' feature uses less power from your hands, even at 1000+ PSI.

AW791 Brass \$27.54

AW792 Stainless Steel \$52.84

AW793 Soft Touch Adapter (Prochem Wands) \$9.83

AW794 Soft Touch Repair Kit (Wands AW791 & AW792) \$11.25



## Extension Cords

These 12 gauge, super capacity extension cords come as non-scuff black and meet all OSHA requirements. They are 3-conductor grounded and are safe for outdoor use. 15 amps, 125 volts, 1875 watts



AX32 25' \$33.29

AX33 50' \$55.78

## Drop Cloth

9' x 12' absorbent paper with leak-proof back. Great for overspray protection and restoration work.



AX74 \$7.99

## Insulated Softside Bag

The perfect bag to carry everything you need! **Durable:** The Softside Bag has a solid leak proof bottom made from chemical-resistant, unbreakable plastic. It is made from extra-heavy-duty water and chemical resistant nylon with extra stitching and material at stress points. Insulation keeps your chemicals at proper temperatures without allowing them to get too hot or too cold. **Versatile:** A shoulder strap leaves your hands free or shorten the strap to carry by hand. Quart bottles, spray bottles, and spotting bottles all easily fit. It makes a great spotting kit or upholstery cleaning kit. There are four large outside pockets - for towels, brushes, tools, measuring and metering devices etc. Extra heavy-duty zippered enclosure. Measures 18" x 9" x 12"

AX82 \$44.99



## Sticky Tabs

The problem with tabs (whether plastic or foil) has always been having them stay in place when you move the furniture. If the tabs move you're in danger of an expensive furniture stain. But new Sticky Tabs solve this problem brilliantly! Sticky Tabs are easy-to-apply, sturdy, 3" x 3 1/2" plastic tabs with adhesive on one side. Simply pull the perforated tabs off the 100' roll (approximately 340 tabs per roll), place them under the furniture (sticky side up), and move the furniture back-and-forth to make pre-spraying and extraction easy.

AC8403 - 100' Roll \$18.34







### SuperStrap

Make your hose handling chores easier than ever. Since SuperStraps have no metal pieces there is no need to worry about damaging your customers homes. As a hose carrier, a SuperStrap will fit around many different size hose lengths and diameters. One strap does it all. Its large handle is designed for comfort and durability.

AX124 \$28.69



SuperStrap handles hose.



### Handy Wand Strap

Put up to 3 handy Spotter's on your wand. Strap has rubber on the inside to prevent slipping.

AS021A \$5.74



### Handy Hook

A stair hook that folds down around the hose or wand for storage. Metal hook is covered with ballistic grade nylon.

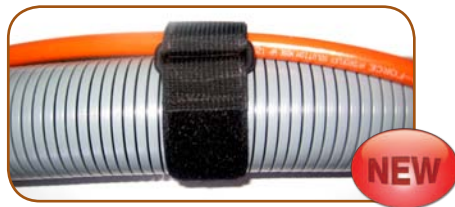
AH93 \$17.24



### Heavy Duty Velcro Strap

10x stronger than regular Velcro straps. If your tired of replacing your hose straps all the time, take a step up to heavy duty.

AX125 \$4.59



### Handy Spotter

With a Handy Spotter you can carry two spot removers and a spotting brush/gum scraper in one easy to access container. Use the loose key ring to attach your spotting brush or gum scraper. Use the Velcro strap to hold your brush or gum scraper securely to your Handy Spotter. Use the clip to attach Handy Spotter to your belt, pocket or your wand with a Handy Wand Strap. No more running out to your van to get spotters.

AS021 \$11.49



### Mop Aid (White, Green, and Black)

Mop-Aid is a scouring tool that hooks to the front of any shoe. Its purpose is to provide a quick and easy way to get tough spots off floors quickly and easily. Mop-Aid comes in heavy, medium and non-abrasive light duty. Heavy duty gets scuffmarks out quick and is great for stripping floors, especially around edges and baseboards. Medium duty is for general cleaning of most floors and will remove scuffmarks and dried on food quickly without damaging the floor. Light duty is non-abrasive for delicate floor surfaces without ruining the floors finish.

AR62 White (for carpet or softer hard surfaces) \$3.44

AR63 Green (general use for most hard surfaces) \$3.44

AR64 Black (for concrete and other durable surfaces) \$3.44



## Accessories

On demand - they pump only when flow is required. Self-Priming and can run dry without harm. Replacement pumps to fit virtually all portable extractors and sprayers.

### FloJet Solution Pumps



AP22	100 psi, demand flow, EPDM, chemical resistant carpet extraction pump	\$172.25
AP38	New technology. 12 Volt fresh water feed pump. Sensor controlled variable speed drive eliminates cycling giving only what your machine demands.	\$276.00
AP25	100 psi, demand flow bypass with viton. New Flojet Generation II Pump Excellent flow curve. Will run carpet or upholstery tool without cycling.	\$159.28
AP20	60 psi, demand flow, EPDM - chemical resistant carpet extraction pump	\$142.11
AP28	48 psi, internal bypass, Viton - highly chemical and solvent resistant pump for carpet and upholstery extractors and sprayers	\$161.70
AP26	45 psi, 12-volt 3.6 GPM demand flow freshwater transfer	\$147.56
AP30	55 psi, Fits Hydro-Force Power Spot, Prochem Spot Pro, Diamondback and Century Spotting Machines	\$48.93
AP33	12-volt, 40 psi, demand	\$144.00
AP34	Replacement pump for AP36 water feed system	\$177.10
AP36	Water feed system for freshwater tank	\$447.35
AP31	45 psi Internal Bypass Viton 115 volt 1.5 GPM	\$137.06

### Shurflo Solution Pumps

Perfectly suited for our industry. These pumps come in 45 psi and 100 psi with either a bypass or a demand system. The 100 psi pumps are designed for portable extractors. These Shurflo diaphragm pumps hold up well with everyday use. Replacement pumps for all portable extractors and sprayers.



AP06	100 psi, demand flow, EPDM, chemical resistant carpet extraction pump.	\$173.88
AP10	100 psi, demand flow with internal bypass, Viton - chemical and solvent resistant carpet and upholstery extraction pump.	\$191.99
AP04	45 psi, internal bypass, EPDM - chemical resistant pump for carpet, upholstery and sprayer.	\$143.24
AP08	45 psi, 12 volt 3.6 GPM demand flow freshwater transfer.	\$132.18
AP12	150 psi, demand flow, EPDM, chemical-resistant carpet extraction pump.	\$202.41

### Genuine Ametek / Lamb Vacuum Motors

#### MOTORS MOST OFTEN USED FOR PORTABLE EXTRACTION



AV18

AV010	Vac Motor 5.7" 2-stage. Fits: Olympus, Hydro-Force FX and EX, Prochem, Mytee, Century, many other 2-stage machines (Lamb's Part Number 116392-00)	\$95.32
AV14	Vac Motor 5.7" 3-stage. Fits: Olympus, Hydro-Force FX and EX, Prochem, Mytee, Century, many other 3-stage machines (Lamb's Part Number 116565-13)	\$157.32
AV06	Vac Motor 4.8" 2-stage. Fits: Hydro-Force Power Spot, Prochem Spot Pro (Lamb's Part Number 116551-50)	\$93.51
AV18	Vac Motor 7.2", 3-stage Lamb. Fits:- Hydro-Force FX, Century, Prochem (Lamb's Part Number 116103-00)	\$301.10
AV08	Vac / Blower 5.7" 2-stage. Fits: ULV Foggers: Hydro-Force, PureMist, Dri-Eaz, MacroMistII, Unsmoke Blastmaster GS Model	\$113.23
AV12	2-Stage with flange for FX88/FX88HP and Truckforce	\$215.51
AV23	3-Stage vac motor 5.7" for Hydro-X	\$198.82
AV16	3-Stage Vac Motor, 5.7" 230 Vac	\$179.47
PAM60-3776-4	Cover Vac Motor AV14/AV010	\$5.83
PA010	Gasket Vac Motor 5.7"	\$7.91
PP43-807110	Gasket Vac Motor 5.7"	\$3.19
PP43-807526	Gasket Vac Motor 4.8"	\$5.57
PMA740043	Flange Vac Motor Inlet 2"	\$8.28
PMA740044	Adhesive Seal Strip for Vac Motor	\$4.83



LM72



LM78

### Signs

These 8-1/2" x 11" signs are printed in bright, attention-grabbing red. Protect yourself from liability problems and post warning signs when appropriate. 50 signs per package.

LM72 or LM78 \$9.14 per package



### Caution Tape

Warn your customers and bystanders. Keep them and your work safe.

- Protect your customers.
- Protect yourself.
- Reduce liability.
- 3" x 1000' roll

AX59 \$18.73



### Preservation Tape

Vinyl tape that won't leave a residue when used to adhere plastic to almost any surface. 60 yards x 2".

AC8399 \$13.17

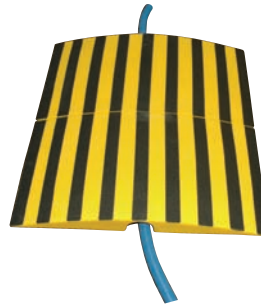


### Caution Sign

This caution sign will get their attention! Warn customers and passers-by of wet carpet and hoses.

- Protect your customers.
- Protect your public.
- Protect yourself.
- Reduce liability.

AW02 \$23.63



### Hose Bridge

*Safety First!*

- Sturdy Polyethylene with Anti-skid Safety Tape.
- Protect your hoses and avoid liability from slips and falls.
- Super strong. It can support the weight of a car!
- Folds up for easy storage and transport.
- OSHA compliant.

AR008 \$316.25



### Corner Guard™

*By Hydro-Force*

These new enhanced Corner Guards™ protect your customer's corners and prevent costly claims.

- Prevent hoses from damaging paint or wall coverings
- Light-weight
- Non-marking plastic
- Unbreakable
- A set of three Corner Guards™ is adequate for most residential jobs

AC18 (corner guard) \$9.49

AC18F (rubber feet) set of 4 \$2.17

### Orange Corner Guard™

*By Hydro-Force*

High-visibility orange color reduces the chance of leaving it behind!

AC181 (orange guard) \$10.18

### Doorjamb Saver

*Doorjamb hose damage - A thing in the past*

- SUPERIOR PROTECTION
- EASY TO USE
- PROFESSIONAL IMAGE
- AVAILABLE IN TWO SIZES

Protect your customer's doorjambs from hoses and quick connects. Snaps around doorjamb without need of adhesives and provides a professional image of caring for your customer's home. Packaged in pairs. Will also work on some types of banister posts.

AC17 (6"x18") \$20.64

AC17W (8"x18") \$22.94







**DoorJam™**

Hoses in...  
 Unwanted temperatures out!  
 Cold air, hot air, bugs and animals are kept outside where they belong, winter or summer, when you use the DoorJam™. All true professionals will now be able to protect the customer's environment and still be able to run hoses through the door. When finished, the DoorJam™ easily rolls into a compact bag for storage. DoorJam™ fits any door from 6' to 9'. Imprinted with "Because We Care".

AD04 \$131.62

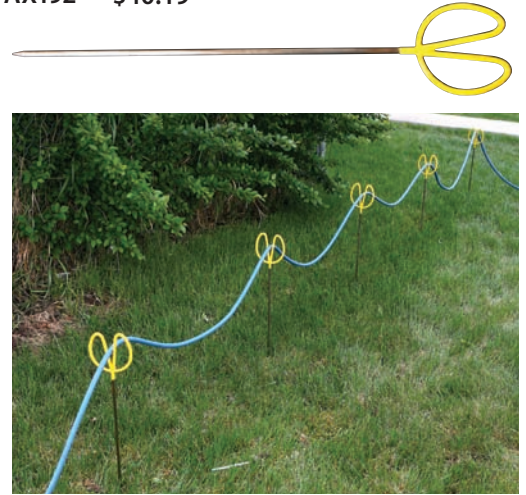
**NEW LARGER SIZE**



**Yard Sticks**

Protect your customer's lawn from burn marks from your solution hoses. Set of 5.

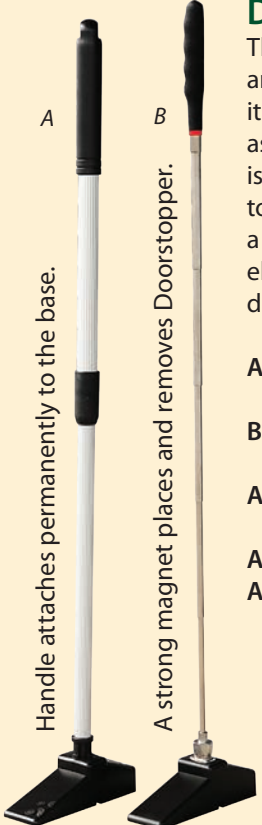
AX192 \$40.19



**Duff's Door Stoppers**

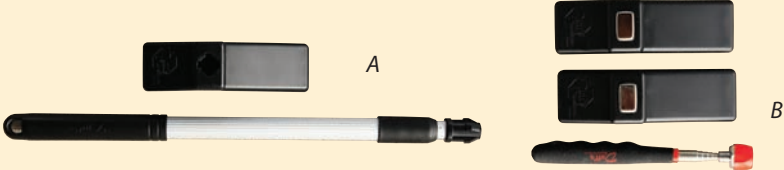
The Duff Doorstopper prevents damage to doors and standardizes the way they are held open. Since it can be placed in the door and removed without bending it reduces the amount of strain on the back and legs. In certain professions such as maintenance, delivery and janitorial, propping a door open with the doorstop is done many times in one day. The repeated action of bending down to the floor to place the doorstop puts a stress on the individual's back. Thus, repeated use of a doorstop can lead to back injuries for the individual. Some persons, such as the elderly or handicapped are unable to bend down to place a doorstop to hold a door open and often lack other means for holding the door open.

- A. AD22 Duff's Doorstopper Adjustable Handle \$19.54
- B. AD20 Duff's Doorstopper Magnetic with Telescoping Handle \$22.99
- AD30 Duff's Carry Case Belt Pack for Magnetic Kit \$10.29 (not shown)
- AD26 Magnetic Telescoping Handle \$12.59
- AD28 Doorstopper Magnetic Base \$9.14



Handle attaches permanently to the base.

A strong magnet places and removes Doorstopper.



**INDEX**

3-Gallon Commercial Sprayer..... 4	Air Mover Shelves..... 37	Aquant..... 16	Beneft Botanical Disinfectant..... 43	Breaker Buddy..... 22
4-Way Faucet key..... 31	Airmovers..... 14, 20	Auto-Recharge Water Softeners..... 35	Blades..... 61	Brush Cleaning Comb..... 53
5-Quart Container..... 62	Airwolf..... 20	Aviation Snips..... 61	Blue Blocks..... 57	Brush N Vac..... 41, 44
Accelerated Tile and Grout Cleaning..... 12	Aluminum Shelf..... 37	Axial Air Mover..... 14	Blue Shoe Covers..... 54	Brush Pro..... 44
Accessories..... 62-66	Amber Glasses..... 24, 58	Back-Pack Vacuum..... 50	Bluebook Cost Guide..... 22	Brushes..... 53
Activo Ozone Generator..... 21	Anti-Allergen All Fiber Rinse..... 41	Base Molding Lifter..... 60	Bone Scraper..... 54	Bucket Heater..... 36
Adhesive Applicator..... 60	Anti-Allergen Brochures..... 41	Battery Sprayer..... 2	Bonnets..... 54	Buckets..... 63
Adjustable Straight Edge..... 60	Anti-Allergen Deodorizer..... 41	BCAM SD Thermal Imaging Infrared Camera..... 25	Boots..... 23	Busy Pockets..... 55
Aggressive Grout Brush..... 11	Anti-Allergen Filter Enhancer..... 41	Behr Claws..... 59	Boroscope..... 25	Camera..... 25
Agitation and Grooming..... 51-53	Anti-Allergen Prespray..... 41	Belt Packs..... 55	Bottle Proportioners..... 63	Carpet and Upholstery Tools..... 45-57
Air King..... 14	Anti-Allergen Relief Treatment..... 41	Beneft Atomic Degreaser..... 43	Brass Velvet Brush..... 53	Carpet Installation Tool Kit..... 60

# INDEX

Carpet Puller.....	61	Flashlights.....	58	Hot Shot Heater.....	36	Plastic Pad Holder.....	36	Stain Magic.....	40
Carpet Repair Tools.....	57-61	Flojet Solution Pumps.....	66	Humidity Data Logger with USB Connector.....	17	Plastic Protector Pads.....	57	Stainless Filter.....	33
Carpet Re-Stetcher.....	59	Flojet VSD.....	34	Hydra Sponge.....	53	Pocket Thermo-Hygrometer.....	16	Stainless Gekko Wand.....	8
Carpet Seam Roller.....	59	Flood Boots.....	23	HydraMaster's driMASTER.....	47	Portable Industrial.....	19	Stainless Sprayers.....	3
Carpet Seam Sealer.....	60	Flood Extracting.....	26, 30	Hydro Vac.....	50	Portables.....	5	Stainless Steel Quick Connects.....	62
Carpet Shears.....	61	Flood King.....	22	Hydro-Coil TM Steel Braided Hose.....	28	Power Jet.....	46	Stainless Steel Shelf.....	37
Carpet Skidders.....	56	Floor/Wall Scraper.....	60	Hydro-Filter.....	33	Power Stretcher Junior Head.....	59	Stair Tool.....	46, 60
Carpet Syringe.....	58	Florguard.....	56	Hydro-Flex Poly Cover.....	28	Power Washer.....	12	Stand Alone Water Softeners.....	35
Carpet Wand.....	46	Foam Rails and T-Clips, ZipWall.....	15	Hydro-Flex Solution Hose.....	28	Power X Pro Extracting Tool.....	48	Sticky Tabs.....	64
Carry-All Tray.....	63	Foam-Less.....	10, 39	Hydro-Force Injection Sprayer.....	1	Power X Pro Spot Machine.....	48	Stor-Ease.....	63
Caution Signs.....	67	Focal Point Axial Air Mover.....	14	Hydro-Force Pile Lifter, The.....	44	Power X Pro Spot Machine with Heater.....	48	Straight Edge.....	60
Caution Tape.....	67	Foam Downer.....	5	Heavy Duty Quick Connects.....	62	Power-Lok Stretcher.....	59	Strip Cutter.....	61
Certified Model S Pile Lifter.....	44	Fogger.....	18	Hydrokinetic Upholstery Cleaning Tool.....	48	Precision Hygro-Thermometer.....	17	Studebaker AirPath.....	21
Chalk Reel.....	60	Foil Protector Pads.....	57	Hydro-Self.....	34	Precision Psychrometer.....	17	Styro-Block Holder.....	36
Chemical Resistant Gloves.....	23	Forearm Forklift.....	56	HydroSensor I and II.....	17	Premium Ball Shut-Off Valve.....	62	Styro-Blocks.....	57
Chemical, Gum Gel.....	49	Forever Clean Water Conditioning Magnet.....	34	Hydro-Stick.....	12	Premium Blue Styro-Blocks.....	57	Super TM High Heat Hose.....	27
Chemicals, Anti-Allergen.....	41	Fresh Water Booster System.....	34	Hydro-Well.....	34	Premium Grout and Stone Sealer.....	10, 39	SuperStrap.....	65
Chemicals, Benefect.....	43	Full Bonnet.....	54	Hydro-Zone Ozone Generator.....	18	Premium Vacuum Hose.....	27	Surveymaster.....	16
Chemicals, Encapsulation.....	41	Full Face Respirator.....	24	Hydry Deluxe.....	47	Preservation Tape.....	24, 67	Swivel Assembly.....	33
Chemicals, Microban.....	42	FX-88.....	6	Hydry Original.....	47	Pressure Wash Gun.....	46	Swivel Cuffs.....	29, 30
Chemicals, Milgo.....	42	FX-88HP.....	6	Hygro and IR Thermometer.....	17	Propane Water Heaters.....	36	Swivel Long Stair Tool.....	46
Chemicals, Red Relief.....	40	Gallon Jug.....	63	Hygrometer.....	16	Protective Clothing.....	23	SK12 Hard Surface Tool.....	7
Chemicals, Spinegy.....	38	Gekko Hand Tool.....	7	IICRC Standards.....	22	Protector Pads.....	57	SK7 Gekko Head.....	8
Chemicals, Sporidicin.....	42	Gekko Heads.....	8	Infrared Camera.....	25	Provision PV-300 Boroscope.....	25	SK7 Stand-Up Gekko Tool.....	8
Chemicals, Stain Magic.....	40	Gekko Tile and Grout Tools.....	8	Injectimate by Hydro-Force.....	58	Pump Out V115.....	29	SK7 Tile and Grout Tool.....	7
Chemicals, Tile and Grout.....	9, 10, 38, 39	General Purpose Sponge.....	53	Injectimate Grout Sealing Kit.....	11	Pump Sprayers.....	2-3	SAPE.....	24, 67
Chemicals, Viper Renew.....	9, 38	Genuine Ametek / Lamb Vacuum Motors.....	66	Injection Sprayers.....	1	Pumpout Hose.....	27	Tape Measure.....	55
Chemicals, Viper Venom.....	9, 38	Gloves.....	23	Insulated Softside Bag.....	64	Pumps.....	66	TCBS Sprayer.....	3
Clear Grout Sealer.....	10	Glue Gun.....	60	IR Laser Thermometer.....	17	PureMist Fogger.....	18	Teflon Advanced.....	39
Connector Sleeve.....	28	Glue Sticks.....	60	IR Thermometer.....	17	QD Wraps.....	32	Telescopic Lamb's Wool Duster.....	53
Container.....	59	Golden Eagle Hot Fogger.....	18	Jet CXV TurboDryer.....	32	Quick Connects.....	62	Thermometer.....	17
Cookie Cutter.....	53	Goodyear Garden Hose.....	27	Keeper Velcro Strap.....	20	Range Finder.....	55	Tile and Grout Brochure.....	12
Cool Cuffs.....	30	Grandi Brush.....	52	Knee Pads.....	24	Razor Blade Knife.....	61	Tile and Grout Chemicals.....	9, 10, 38, 39
Cool Shield Heat Bond Iron.....	61	Grandi Combo.....	52	Kool Glide.....	57	Red Relief.....	40	Tile and Grout Postcard.....	12
Corner and Edge Brush.....	11	Grandi Groom.....	52	Kool Tape.....	57	Reducer Cuffs.....	30	Tile and Grout Tools.....	7-13
Corner Guards.....	67	Grandi Groom to Grandi Brush Conversion.....	52	Large Horsehair Brush.....	53	Regular Horsehair Brush.....	53	Towel Clip.....	55
Crevice Tool.....	48	Grooming.....	51, 52	Laser Range Finder.....	55	Respirator.....	24	Towels.....	55
Cuffs.....	29, 30, 31	Grout Brush.....	11	Laser Thermometer.....	17	Respirator Facepiece.....	24	Trigger Sprayer.....	4
Cushion Back Cutter.....	59	Grout Dyes.....	10	Lay Flat Ducting.....	15	Restoration Tools.....	14-26	Turbo Cat Zoom.....	50
Customer Care Accessories.....	67, 68	Grout Sealer.....	10	Leather Work Gloves.....	23	Restorator, The.....	19	TWBS Sprayers.....	2
Datalogger.....	17	Grout Stick.....	11	Lift Buddy.....	56	Revolution Sprayers.....	1	Tyvek Suits.....	23
DefendAir Hepa 500.....	21	Grout Wand.....	11	Linoleum Knife.....	60	Rill Remover.....	55	Ultimate Spotting Kit.....	59
Dehumidifiers.....	20	GT Conventional Carpet Trimmer.....	61	Lint Lifter.....	54	Rolling Tape Measure.....	55	Ultra Strong White Styro-Blocks.....	57
Deluxe Glue Gun.....	60	GT Loop Pile Cutter.....	59	Long Tube UV Detection Light.....	58	Rotary DriMaster Extractor.....	45	Ultraviolet AC/DC Rechargeable Lantern.....	58
Deluxe Grip Pouch.....	59	GT Power-Lok Stretcher.....	59	Low Pressure Sprayers.....	1	Rotary Floor Machine.....	13	Universal Faucet Adapter Kit.....	31
Deluxe Knee Kicker.....	61	Gum Blaster Wand.....	49	Masks.....	23	Rover HVE Flood Extractor.....	21	Upholstery Tools.....	47-48
Deluxe Respirator.....	24	Gum Gel.....	49	Measuring Cups.....	63	Rubber Mallet.....	60	Upholstery/Stair Tool.....	48
Description Label.....	62	Gum Getter.....	49	Membrane.....	69	RX-20.....	45	Utility Scrub Brush.....	53
Desiccant.....	20	Gum Removal.....	49	Metering Tip Kit.....	12	Safe Connects.....	32	UV LED Flashlight.....	58
Disinfectant Solution.....	42	Hair and Lint Lifter.....	54	Meters.....	16, 17	Safety Glasses.....	24	UV XENON Flashlight.....	58
Door Stoppers.....	68	Hammer Electrode.....	16	Microban Disinfectant.....	42	Sahara E.....	20	Vac Attack.....	29
DoorJam.....	68	Hand Bonnet.....	54	Microban QGC.....	42	Sahara HD.....	20	Vac Stap.....	32
Doorjamb Saver.....	67	hand Fit Scrub Brush.....	53	Microban X-580.....	42	Sahara Pro.....	20	Vacuum Hose.....	27
Double Holder.....	36	Hand Sprayers.....	4	Microfiber Bonnet.....	54	S-Bend Quad Jet Wand.....	46	Vacuum Hose Reel.....	33
Double Self-Supporting Hose Reel Stand.....	33	Hand Vac Tool.....	48	Milgo QGC.....	42	Scented Vaportek Cartridges.....	19	Vacuum.....	50
Dri-Eaz.....	20, 21	Hand-Fit Horsehair Brush.....	53	Milgo SR.....	42	Scuff Shield.....	56	Van Accessories.....	31-37
DriForce Interair Drying System.....	20	Handi Brush.....	51	Mini Thermo-Anemometer.....	17	Seaming Iron.....	57	Van Curtain.....	37
driMASTER.....	47	Handi Groom.....	51, 53	MMS Plus by Protimeter.....	16	Secure Loc.....	62	Van Shelf.....	37
DriTec.....	20	Handy Hook.....	65	Moisture Meters.....	16	Self-Supporting Hose Reel Stand.....	33	Vapor Cleaning Machine.....	22
DriZair LGR.....	20	Handy Spotter.....	65	Moisture Test Meter.....	16	Shears.....	61	Vapor Shark.....	19
Drop Cloth.....	23, 64	Handy Wand Strap.....	65	Mop Aid.....	65	Shelves.....	37	Vaportek.....	19
Drum/Pail Pump.....	64	Hard Surface Tool.....	7	Motors.....	66	Shockbuster.....	22	Velcro Strap.....	65
Dry Cleaning Sponge.....	23, 54	Hazmat/Flood Boots.....	23	Multi-Purpose Adhesive 3000.....	60	Shoe Covers.....	54	Velvet Garding Brush.....	53
Duckbill Napping Shears.....	61	Headpack.....	63	Nail Driving Bar.....	61	Shurflo Solution Pumps.....	66	Versa Pro.....	13
Ducting.....	15	Headpack Holder.....	36	Nap Brush with Handle.....	63	Shut-Off Valve.....	62	Vinyl Disposable Gloves.....	23
Duff's Door Stoppers.....	68	Heat Bond Tape.....	60	Napping Shears.....	51	Sight Tube.....	29	Viper Renew.....	9
DuPont Teflon Advanced.....	39	Heaters.....	36	Natural Ocean Sponge.....	53	Signs.....	67	Viper Renew.....	9, 38
Dust Cloths.....	23	Heavy Duty Slotted Blades.....	67	Neo Knees.....	24	Small UV LED Flashlight.....	58	Viper Venom.....	9, 38
Dust Downer.....	50	Heavy Duty Vacuum Hose.....	27	Nitrile Disposable Gloves.....	23	Soft Touch Valve.....	64	Vortex.....	20
Dust Mask.....	23	Heavy Duty Velcro Strap.....	65	Nylon Hose Carrying Bag.....	32	Solution Hose.....	28	Wall and Cavity Dryer.....	14
Easy Reach Upholstery/Stair Tool.....	47	HF200 Heater for Truckmounts and Portables.....	36	Octi-Dry.....	15	Solution T.....	32	Wand Handle.....	48
Econo Ball Shut-Off Valve.....	62	Hide-A-Hose Swivel Cuff.....	39	Olympus M1200.....	5	Solvent-Based Grout Sealer.....	10, 39	Wand Strap.....	65
Edging Crevice Tool.....	46	High Pressure Sprayers.....	1	Olympus Portable Extractors.....	5	Sonin 4 in 1 Multi Function Detector.....	16	Wands.....	46
Encapsulation Tools.....	44	High Speed RX-20.....	45	Omni Pro Sprayer.....	2	Sonin Laser Targeting Range Finder.....	55	Water Booster System.....	34
Enzyme Mold Cleaner.....	42	High-Output Cartridge.....	19	OmniDry 33.....	14	Sonin Moisture Test Tool.....	16	Water Claw.....	26
Evolution.....	20	Hinge Pin Remover.....	61	OmniDry Wall and Cavity Dryer.....	14	Sonozaire Ozone Neutralizer.....	18	Water Otter Power Washer.....	12
Evolution Truckmount Wand.....	45	Holders.....	36	Organic Vapor Respirator Cartridge Set.....	24	Spigot for Headpack.....	63	Water Softeners.....	35
Extech pH Meter.....	17	Horsehair Brush.....	53	Ozone Generator.....	18	Spinegy 2, 7, and 11.....	9, 38	Wet Vacuum Tool.....	46
Extension Cords.....	64	Hose.....	27, 28	Pail Pump.....	64	Splash Proof Safety Glasses.....	24	White Chalk.....	60
Extractors.....	45	Hose Bridge.....	67	Pailtop Sprayer.....	4	Sponges.....	23, 53-54	Whizgroom.....	51
EZ Moves.....	56	Hose Cuffs.....	29-31	Parflex Solution Hose.....	28	Sporidicin.....	42	Wide Mouth Gallon.....	63
EZ-Access Ramp.....	6	Hose Hanger.....	32	Perky Brush.....	51	Spot Lifter.....	26	Wrap Around Safety Glasses.....	24
EZ-ier Tape.....	24	Hose Hook.....	32, 65	Perky Groomer.....	51	Spot Removing System.....	52	Y Cuffs.....	31
Faucet Adapter.....	31	Hose Reels.....	33	Perky Spotter.....	51	Spotting Bottles.....	63	Yard Sticks.....	68
Faucet to Hose Adapter.....	31	Hose Washing.....	31	Pet Odor Deodorizer.....	58	Spotting Brush.....	53	ZipWall.....	15
Filter Bags.....	33	Hoser, The.....	31	pH Indicator Test Tape.....	50	Spotting Kit.....	59		
Five-Gal Headpack for Truckmounts.....	63	Hot Fogger, Electric.....	18	pH Meter.....	17	Sprayers.....	1-4		
Fixi-Clamp, The.....	23, 54	Hot-Melt Carpet Seam Tape.....	60	Pile Lifter.....	44	Stack Bracket for Solution Reels.....	33		





## The Prodigy HS / R

The Prodigy HS / R from PowerPlus is designed for Hard Surface Cleaning and hard core Restoration Companies. This Machine breaks all the boundaries and delivers the power to do almost anything including Tile & Grout, Mold Remediation, Marble & Granite Restoration and Hard Core Pressure Washing. This Prodigy generates 4.8 GPM. At 3,000 psi. Water pressure. 280 CFM. At the end of 700 FT. of hose, SOVC. onboard, 23 HP. Engine, Dual Fuel Propane or Gas, Solid S.S. Heat exchangers and Exhaust for Acid Resistance, Dual Hose Reels with a 70-gallon stainless steel waste tank, 325 feet of vacuum hose, 325 feet of solution hose, dual-hose reel, and an S-bend stainless steel wand. Super-easy installation and maintenance.



## The Prodigy

The Prodigy from Powerplus is the perfect entry-level truck mount system that delivers the power and features to grow with you as you grow your business. And the Prodigy generates over 3,000 psi water pressure so you can go after highly profitable pressure washing jobs (need pressure washing gun.) The Prodigy is a complete professional cleaning system that comes standard with a 100-gallon stainless steel waste tank, 125 feet of vacuum hose, 125 feet of solution hose, dual- hose reel, and an S-bend stainless steel wand. Super-easy installation and maintenance.



## The Banshee

The Banshee packs more power than any other truck mount into a system that weighs less than 300 pounds (excluding waste tank.) The Banshee saves valuable van or truck space and delivers more than enough power for dual wand cleaning applications. The standard Banshee system includes SOVC (see page 3), a 100-gallon stainless steel waste tank, 225 feet of vacuum hose, 225 feet of solution hose, 300-ft. dual-hose reel, and an S-bend stainless steel wand.



## The Tsunami

Tsunami Cleaning Technologies Inc. introduces the Ts 5.6, the first truck mounted cleaning system that utilizes Computer Controlled Components (C3 Technology\*) with Software Enhanced Performance (S.E.P.\*).

The Ts 5.6 microprocessor monitors each system 20 times per second throughout machine operation. Software profiles are recorded and applied to each control to ensure peak performance and prevent system failure. A highly advanced S.O.V.C.\* airflow system utilizes the maximum power of the blower by forcing all the airflow through the wand, not the relief valve, providing true cleaning CFM. The Ts 5.6 is designed with a user-friendly control panel that features a display module and keypad for easy to read messages and push button control. Step into the new era of performance, profit, and prestige. Call Tsunami today for more information and the location of your nearest distributor. Distributor inquiries welcome.