



prodigy



The Prodigy is designed to help you grow your business into these and other areas without needing to buy additional specialty machines.



The Prodigy™ is an extremely powerful, feature-rich truckmount that gives entry-level cleaners room to grow and experienced cleaners expanded cleaning, and revenue generating capabilities.

It's all there: Powerplus engineers didn't leave anything out when they used sophisticated Computer-Assisted Design (CAD) programs to create the Prodigy. Each Prodigy system comes standard with an integrated 70 gallon waste tank, a triple-stage stainless steel heat exchanger, a Roots 36 blower, a starter hose and wand set and much more. There's no need to try to assemble a system yourself – Prodigy has everything you need to get to work today.

It's so easy: Ever screw a bolt into a threaded hole? Then you can install the Prodigy! In fact, the typical 4-bolt EZ-installation takes less than 30 minutes! And Powerplus made operation and maintenance a snap by putting all the gauges, controls and maintenance items at the front of the machine.

It's got the power: You will not find another economy truckmount with this much power – 3,000 psi working pressure. You can use this power to unlock new business opportunities like pressure washing and tile and grout cleaning.

If you are ready for serious power, convenience and profit, call your local factory-trained Powerplus Distributor today.

Prodigy from Powerplus – Power made easy

POWERPLUS

Your One-Stop Source for every professional cleaning need.

The Most Powerful, Economy-Class Truckmount available

www.powerplisonline.com

prodigy



Performance Features

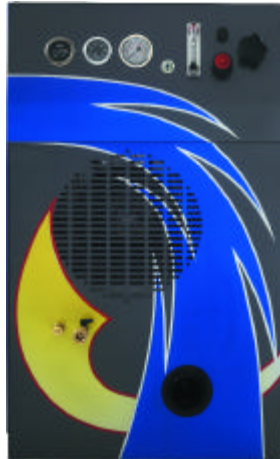
Pressure: 3,000 psi working pressure
Pump Volume: 3.0 gallons per minute

Physical Specifications (standard)

Dimensions: 34.5" W x 40" H x 42" D (inc. waste tank)
Weight: 450 lbs (with tank)
Frame: Powder-coated high-strength steel
Engine: 18 HP Vanguard Overhead Valve
Water Pump: Oil bath pump
Heating System: Stainless Steel 3-Element Exchanger
Recovery Tank: 70 gallon heavy-duty steel tank
Hoses: 125 ft. vacuum + 125 ft. solution hoses
Ignition: Keyed electronic ignition
Instruments: Rugged marine gauges
Wand: 2-jet stainless steel S-bend wand w/bypass

Optional Upgrades

- SOVC technology ready – more than doubles operating hose length to 700 ft. and adds five to ten degrees heat
- Silencing package for ultra-quiet operation
- Choice of three different water softeners
- Custom designed panels (see right) – perfect solution for franchise operations or cleaners wanting a more distinctive, professional appearance



Application Guide

a quick overview of what you will need to get the most out of your Prodigy – all available from Powerplus.

Carpet: The integrated Prodigy system ships standard with everything you will need to clean carpet except cleaning chemicals.

Upholstery: You will need specialty upholstery cleaning attachments.

Tile: You will need tile cleaning chemicals and a specialty tile cleaning tool attachment.

Fire & Flood: You will need a Powerplus Auto-PumpOut machine and restoration chemicals.

Pressure Washing: The Prodigy provides all the power you need for pressure washing. Additionally you will need washing detergents and a pressure washing gun.

Auto Detailing: You will need washing detergents, a pressure washing gun and upholstery tools.

Windows: You will need a Powerplus Water Softener and Professional Window Cleaning Kit.

Drapes: You will need a specialty drape tool.



To find your nearest Powerplus dealer, call Powerplus today at (714) 635-9264 or visit us on the web at the address below

Financing & Ownership Solutions

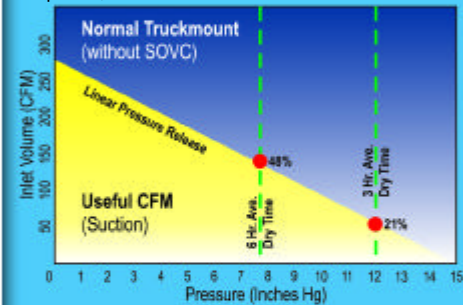
- Payment Plans
- Long-term rentals
- Training Videos
- On-Site Service

2002 © All rights reserved. Prodigy is a trademark of Powerplus Professional Cleaning Solutions.

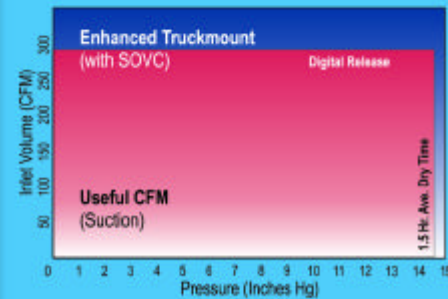
what is SOVC™?

SOVC* is a revolutionary patented product from Tsunami Cleaning Technologies that doubles the suction power of any truckmount and cuts dry times by 50%.

How does SOVC do that? SOVC digitally controls the pressure relief valve common to all truckmounts. Typical pressure relief valves begin to open as soon you begin cleaning. As the chart below illustrates, the more stress you put on the truckmount (to achieve a shorter dry time), the more the relief valve opens and the greater the loss of suction power, or CFMs.



The SOVC kit replaces the manual relief valve with an electronically-controlled valve system that safely maximizes the suction power of your truckmount. As the chart below shows, SOVC delivers a massive power boost and cuts dry times dramatically.



*SOVC or Solenoid Operated Valve Control. SOVC is a trademark of Tsunami Cleaning Technologies. U.S. patent nos. 5,987,696 and 6,176,940B1. Multiple foreign patents pending